

5

4

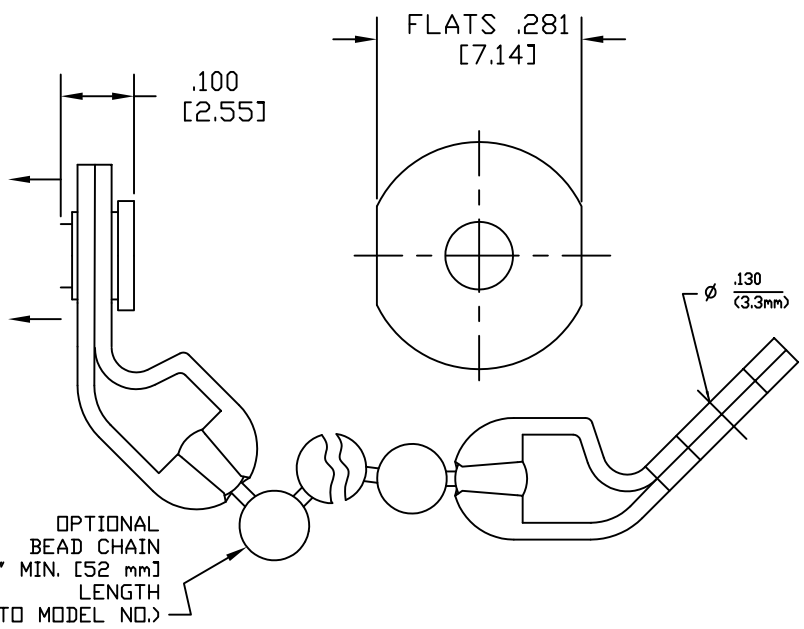
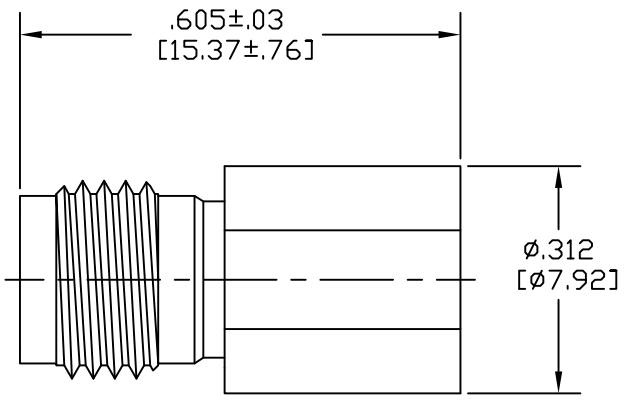
3

2

1

**PRODUCTION  
RELEASE**

REVISIONS		DATE	APPROVED
LTR	DESCRIPTION		
B	ADDED STORAGE TEMP	3/29/10	T. KUHN



**NOTES:**

- MATERIAL:**  
HOUSING: STAINLESS STEEL IAW ASTM-A484 & ASTM-A582, ALLOY 303, COND A  
CONTACT: BERYLLIUM COPPER  
DIELECTRIC - HIGH TEMPERATURE PLASTIC BEAD
- FINISH:**  
HOUSING - PASSIVATED STAINLESS STEEL  
CONDUCTOR - GOLD PLATED IAW MIL-PRF-39012
- ELECTRICALS:**

VSWR (MAX)	DC-18 GHz	1.15:1
	18-35 GHz	1.30:1
	35-50 GHz	1.45:1

POWER (AVG. MAX.) @25°C SEE TABLE  
 DERATES LINEARLY TO 10% @ +100°C  
 OPERATING/STORAGE TEMPERATURE RANGE °C -55 to +100

**ORDERING INFORMATION**

8502-710X-02	POWER LEVEL
X = 0	0.5 WATT
X = 2	1 WATT

8502-710X-02 NO CHAIN  
 8502-710X-02-C 2' CHAIN ADDED

<b>DRAWING PRACTICES PER ANSI-Y14.5 MIL-STD-100 &amp; 1000</b>	<b>UNLESS OTHERWISE SPECIFIED TOLERANCES IN:</b>	<b>DRAWN</b>	<b>DATE</b>
<b>DIMENSIONS ARE IN INCHES AND APPLY BEFORE/AFTER PROCESSING</b>	<b>DECIMALS</b>	T. KUHN	2/11/09
<b>SURFACE ROUGHNESS</b>	<b>INCH</b>	CHECKED	DATE
63 ✓	.X" .03" [.76]	ENG.	DATE
<b>FINISH</b>	.XX" .010" [.25]	T. KUHN	2/11/09
SEE NOTES	.XXX" .005 [.127]	THESE DRAWINGS AND SPECIFICATIONS ARE THE PROPERTY OF XMA CORP. OR OMNI SPECTRA AND SHALL NOT BE REPRODUCED, COPIED NOR USED - IN WHOLE OR IN PART - AS A BASIS FOR THE MANUFACTURE OR SALE OF OTHER ITEMS WITHOUT THE EXPRESS WRITTEN PERMISSION OF XMA CORP.	
<b>MATERIAL</b>	.XXXX" .0005" [.013]		
SEE NOTES	ANGLES ±0°30'		
	REMOVE ALL BURRS/SHARP W/ BREAK / R OF .003" TO .0005" UNLESS OTHERWISE NOTED DIAS CONCENTRIC <.003 T.I.R.		

**XMA** Omni Spectra™  
 150 Dow Street, Manchester, NH 03101 P603-222-2256 F603-222-2259  
 TITLE: **TERMINATION, 2.4mm, FEMALE, DC-50GHz**

SIZE	CAGE CODE	DRAWING NUMBER
B	3HT76	8502-710X-02 (OPT "C")
SCALE	PLATED AREA	SHEET 1 OF 1
6:1	XXX	

5

4

3

2

1

BCSI