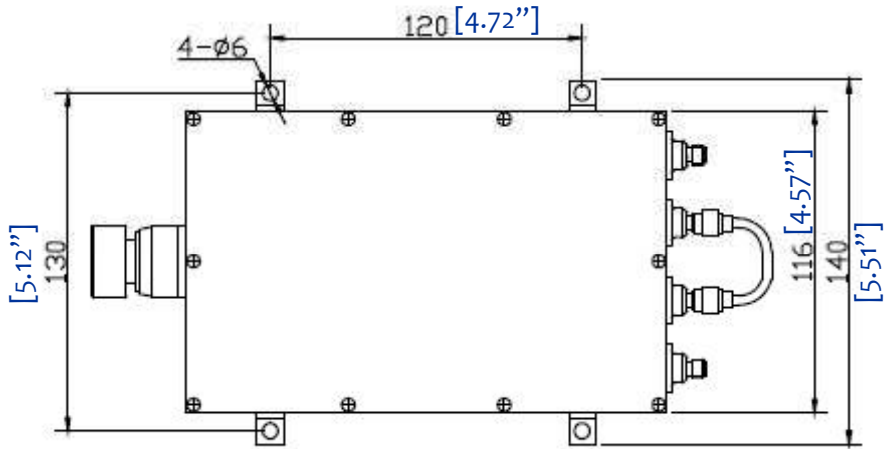
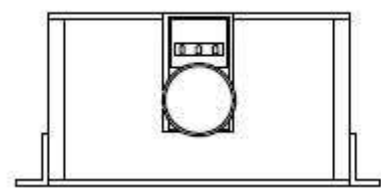
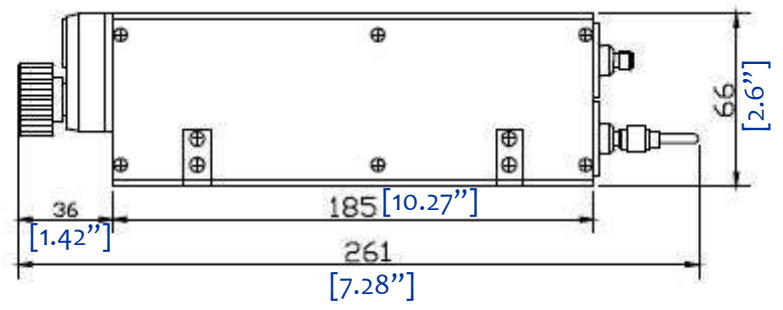
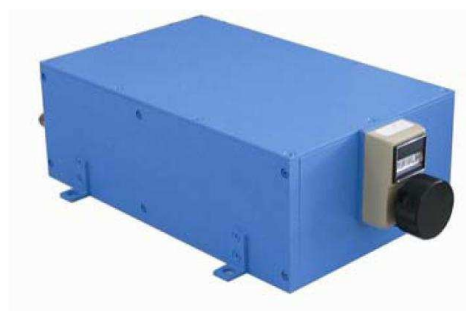


PHASE SHIFTER TUNER

--- RFPSHT0002W6



Electrical Specifications					
Frequency (GHz)	Insertion Loss (dB)	Phase Adjustment	Max VSWR	Average Power (W)	Peak Power
Dc-2	< 3	720° ***	2.2	50	5KW

***Phase Adjustment Range specification ONLY refer to the highest frequency point. Total Phase Adjustment Range is proportion of Frequency range. HALF the frequency range, HALF of the phase adjustment range. (For example 8GHz range 360°, then 4GHz will be 180° total range)

1.0 Mechanical Specifications		
1.1	Connector	SMA(F,F)
1.2	Size	10.27" x 5.51" x 2.6" (261 x 140 x 66mm)
1.3	Weight	1680g
1.4	External Finish	Body painted with blue/black epoxy enamel

2.0 Environment specifications		
2.1	Operation Temp.	-10°C~+50°C
2.2	Storage Temp.	-40°C~+70°C
2.3	Altitude	45000 ft
2.4	Vibration	10g rms (15 degree 2KHz)
2.5	Humidity	100% RH at 35c, 95%RH at 40 deg c
2.6	Shock	20G for 11msc

PAGE 1 OF 1	DATE Oct 8 th 2006
<small>PROPRIETARY INFORMATION THE INFORMATION CONTAINED IN THIS DOCUMENT IS THE PROPERTY OF RF-LAMBDA EXCEPT AS SPECIFICALLY AUTHORIZED IN WRITING BY RF-LAMBDA. THE HOLDER OF THIS DOCUMENT SHALL KEEP ALL INFORMATION CONTAINED HEREIN CONFIDENTIAL AND SHALL PROTECT SAME IN THE WHOLE OR IN PART FROM DISCLOSURE AND DISSEMINATION OF ALL THIRD PARTIES AND SHALL USE SAME FOR OPERATING AND MAINTENANCE PURPOSES ONLY</small>	DESIGN RFPC
	RF-LAMBDA RFPC
	CAD MODEL REVISION 10
	ASSEMBLY REVISION VS52
	ASSEMBLY NAME RFLVR07
www.rflambda.com	DRAWING NUMBER D05-A
RF-LAMBDA	SIZE LT SHEETS 1 OF 1