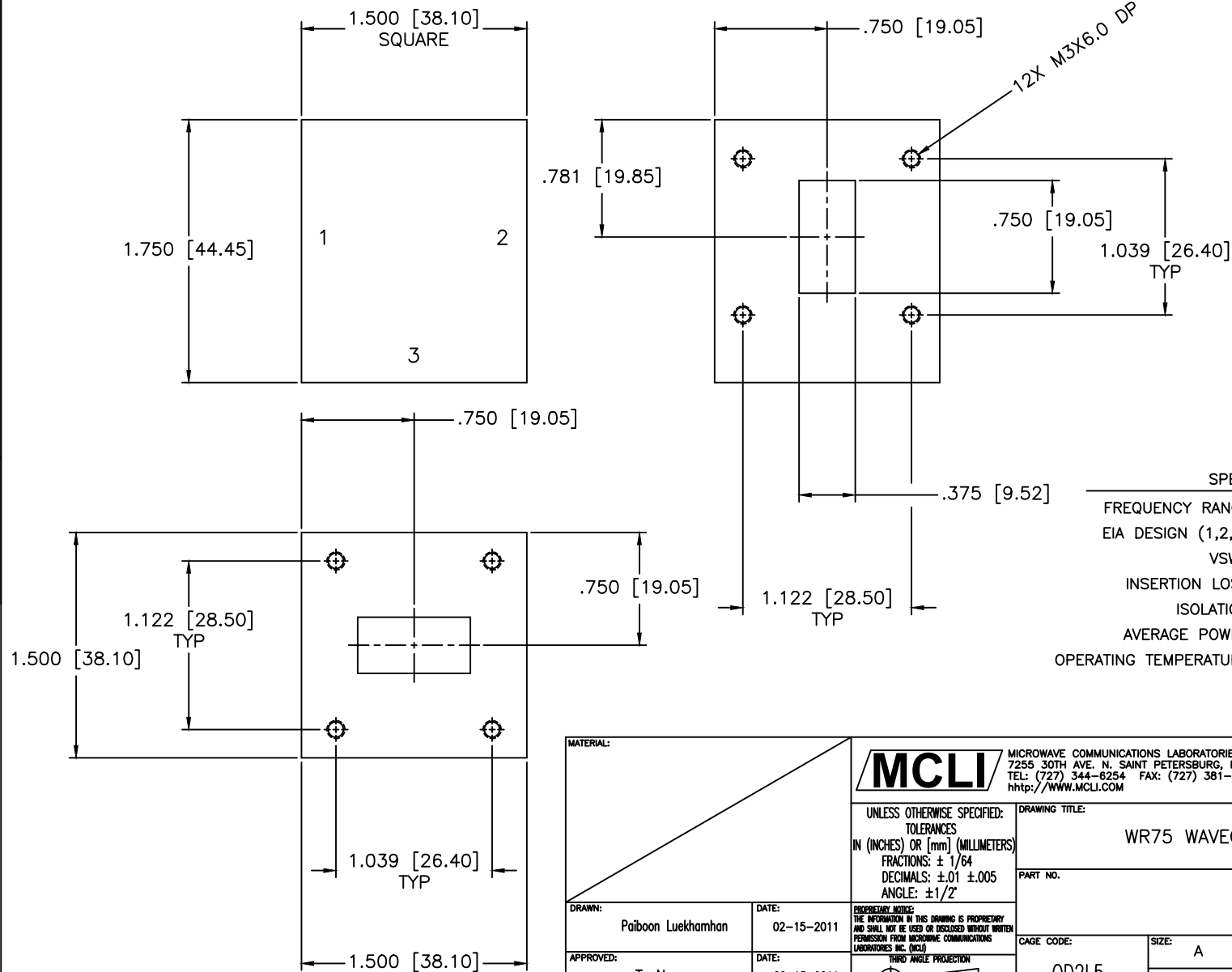


REVISIONS				
ZONE	REV	DESCRIPTION	DATE	APPROVED



SPECIFICATIONS

FREQUENCY RANGE: 11.5–12.6 GHz
 EIA DESIGN (1,2,3): WR75
 VSWR: 1.20:1 Max.
 INSERTION LOSS: 0.25dB Max.
 ISOLATION: 21dB Min.
 AVERAGE POWER: 100W, 500W Peak
 OPERATING TEMPERATURE: -30°C to +70°C

MATERIAL:			MICROWAVE COMMUNICATIONS LABORATORIES INC. 7255 30TH AVE. N. SAINT PETERSBURG, FL 33710 TEL: (727) 344-6254 FAX: (727) 381-6116 http://WWW.MCLI.COM		SCALE:	N/A	
					SHEET:	N/A	
		UNLESS OTHERWISE SPECIFIED: TOLERANCES IN (INCHES) OR [mm] (MILLIMETERS) FRACTIONS: ± 1/64 DECIMALS: ±.01 ±.005 ANGLE: ±1/2°		DRAWING TITLE:			WR75 WAVEGUIDE CIRCULATOR
DRAWN:		DATE:		PART NO.			CSW-8
Paiboon Luekhamhan 02-15-2011		T. Nguyen 02-15-2011		CAGE CODE:		OD2L5	
APPROVED:		DATE:		SIZE:	REV:	DWG NO.	
T. Nguyen		02-15-2011		A	N/A	85511	
				DO NOT SCALE THE DRAWING			