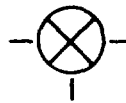


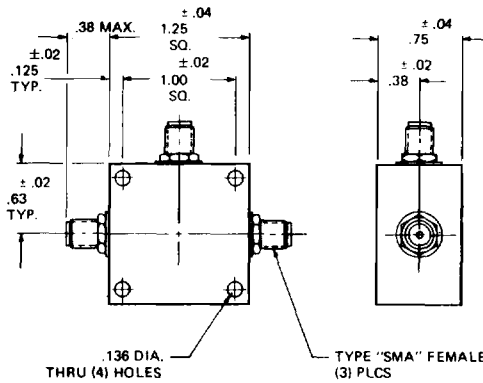
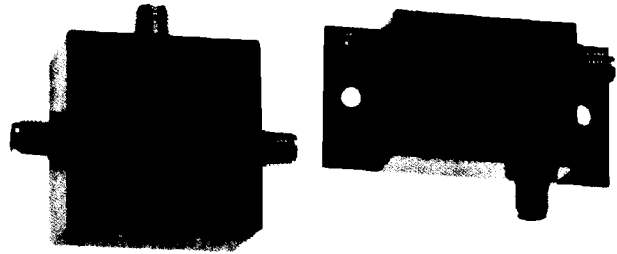
# TOROIDAL MIXERS



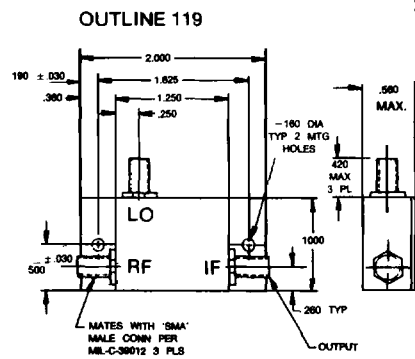
# SERIES MLK

## GENERAL SPECIFICATIONS:

**Impedance:** 50 ohms nominal  
**DC Offset:** 1 mV Typical  
**Input Power: (RF + LO):** Low Level 50 MW Max.  
 Med Level 200 MW Max.  
 High Level 500 MW Max.  
**Temperature Range:** -55 to +100°C (operating & storage)  
**Peak IF Input Current:** 40 MA (Low Level Only)  
**Finish:** Grey Paint



OUTLINE 110



OUTLINE 119

### 1 dB COMPRESSION POINT (Typical)

Low-level +1 dBm  
 Med-level +7 dBm  
 High-level +15 dBm

### 2-TONE INTERMODULATION DISTORTION

#### 3rd Order Intercept Point (Typical)

Low-level +13 dBm  
 Med-level +23 dBm  
 High-level +30 dBm

Weight: 42 Grams  
 Finish: Gray Enamel Baked  
 MIL-E-15090 Class I  
 Type 3  
 SMA, BNC, TNC & N  
 Connectors Available  
 (Last letter of Model  
 = Connector type)

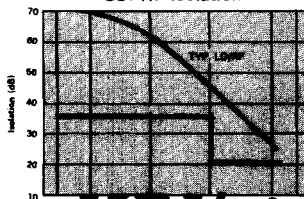
M = SMA  
 B = BNC  
 N = TYPE N  
 T = TNC

## PERFORMANCE SPECIFICATIONS

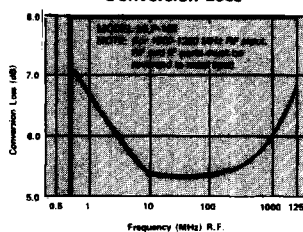
LO Input Level	Model*	Frequency		Conversion Loss (dB Max.)	Isolation (dB Min.)		Outline No.
		LO/RF (MHz)	I.F. (MHz)		LO-RF	LO-IF	
LOW LEVEL +7-10 dBm	MLK-101	0.25-2500	0.25-600	9.0	25	20	110
	MLK-102	0.5-1250	DC-1000	8.0	20	15	110
	MLK-103	0.01-150	DC-150	6.0	25	25	110
MED LEVEL +17 dBm	MHK-106	1-2500	1-2000	8.5	20	20	110
HIGH LEVEL +23 dBm	MVK-103	0.01-200	DC-200	7.0	25	20	110
	MVK-106	1-2500	1-1000	9.0	20	20	110
	MVK-107	0.01-500	DC500	7.5	25	20	110
	MVK-109	1-1000	DC-1000	8.0	25	15	110
+13 dBm (NOM.)	MLK-206M	10-3000	DC-1000	9.0	25	20	119
+7 dBm (NOM.)	MLK-207M	1-400	DC-400	6.5	35	30	119
+7 dBm (NOM.)	MLK-208M	500-1200	DC-400	6.5	25	20	119
+10 dBm (NOM.)	MLK-209M	800-2000	1-2000	8.0	25	20	119

\*Add suffix to specify connector type (M = SMA, N = Type N, B = BNC, T = TNC)

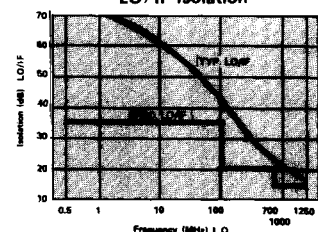
Models MLK-102 (connector)  
50kHz-1250MHz  
LO/RF Isolation



Models MLK-102 (connector)  
50kHz-1250MHz  
Conversion Loss



Models MLK-102 (connector)  
500kHz-1250MHz  
LO/IF Isolation



**KDI/triangle  
ELECTRONICS**

31 Farinella Drive • East Hanover, NJ 07936 • Phone: (201) 884-1423  
 TWX: (710) 986-8202 • FAX: (201) 884-0445