

Low Pass Filter

SXLP-30+

50Ω DC to 30 MHz

Maximum Ratings

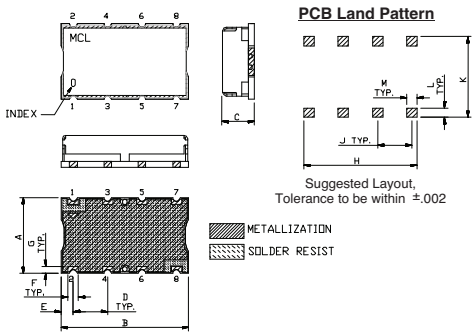
Operating Temperature	-40°C to 85°C
Storage Temperature	-55°C to 100°C
RF Power Input	0.5W Max.

Permanent damage may occur if any of these limits are exceeded.

Pin Connections

INPUT	1
OUTPUT	8
GROUND	2, 3, 4, 5, 6, 7

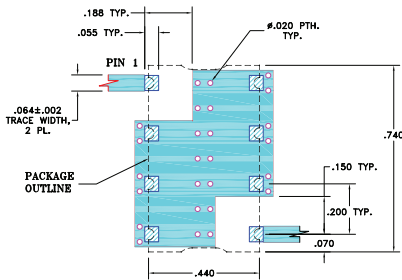
Outline Drawing



Outline Dimensions (inch/mm)

A	B	C	D	E	F	
.44	.74	.27	.200	.07	.060	
11.18	18.80	6.86	5.08	1.78	1.52	
G	H	J	K	L	M	wt.
.040	.660	.200	.470	.055	.060	grams
1.02	16.76	5.08	11.94	1.40	1.52	3.0

Demo Board MCL P/N: TB-368 Suggested PCB Layout (PL-230)

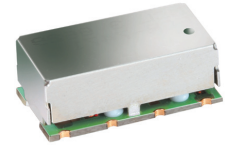


Features

- high rejection
- sharp cut-off
- shielded package
- aqueous washable
- low cost

Applications

- defense communications
- receivers / transmitters
- harmonic rejection



CASE STYLE: HF1139
PRICE: \$11.45 ea. QTY (1-9)

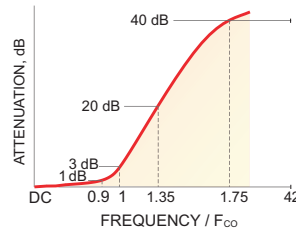
+RoHS Compliant

The +Suffix identifies RoHS Compliance. See our web site for RoHS Compliance methodologies and qualifications

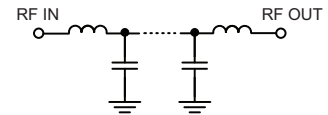
Low Pass Filter Electrical Specifications (T_{AMB} = 25°C)

PASSBAND (MHz)	f _{co} , MHz Nom.	STOPBAND (MHz)		VSWR (:1)	
		(Loss > 20dB)	(Loss > 40dB)	Passband Typ.	Stopband Typ.
DC - 30	35	47 - 61	61 - 1500	1.7	18

Typical Frequency Response

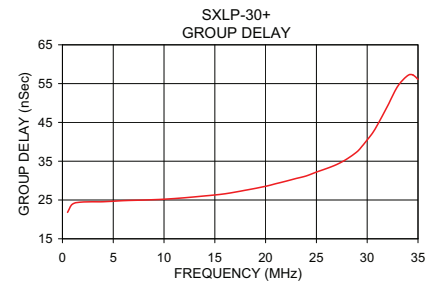
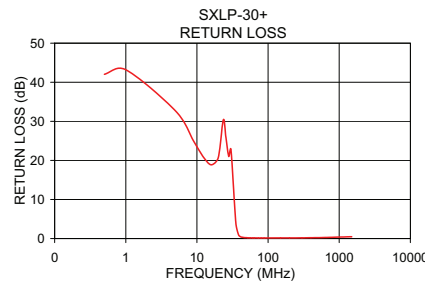
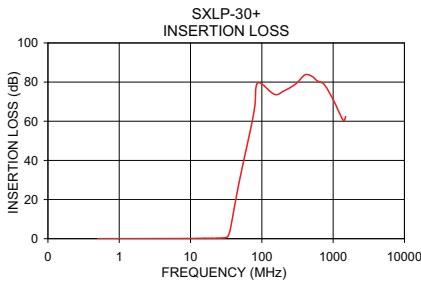


Functional Schematic



Typical Performance Data at 25°C

Frequency (MHz)	Insertion Loss (dB)		Return Loss (dB)	Frequency (MHz)	Group Delay (nSec)
	\bar{x}	σ			
0.5	0.01	0.01	42.03	0.5	21.81
1.5	0.02	0.00	44.66	2.0	24.48
3.0	0.04	0.00	43.09	6.0	24.84
8.0	0.08	0.00	29.10	8.0	24.98
13.0	0.16	0.01	21.22	10.0	25.20
26.0	0.31	0.01	24.98	12.0	25.56
30.0	0.45	0.01	24.54	14.0	26.05
33.0	0.96	0.03	12.27	16.0	26.60
34.0	1.70	0.04	7.64	18.0	27.51
35.0	2.97	0.06	4.63	20.0	28.54
36.0	4.77	0.10	2.77	22.0	29.85
38.0	9.25	0.17	1.11	23.0	30.55
42.0	18.19	0.26	0.38	24.0	31.20
47.0	27.53	0.33	0.24	25.0	32.21
61.0	47.11	0.55	0.17	26.0	33.11
100.0	74.33	2.07	0.15	27.0	34.15
400.0	81.35	2.33	0.19	28.0	35.56
800.0	78.11	1.32	0.28	30.0	40.49
1200.0	66.61	1.54	0.39	33.0	54.30
1500.0	60.60	1.50	0.47	35.0	56.10



For detailed performance specs & shopping online see web site

P.O. Box 350166, Brooklyn, New York 11235-0003 (718) 934-4500 Fax (718) 332-4661 The Design Engineers Search Engine Provides ACTUAL Data Instantly at minicircuits.com

Notes: 1. Performance and quality attributes and conditions not expressly stated in this specification sheet are intended to be excluded and do not form a part of this specification sheet. 2. Electrical specifications and performance data contained herein are based on Mini-Circuit's applicable established test performance criteria and measurement instructions. 3. The parts covered by this specification sheet are subject to Mini-Circuits standard limited warranty and terms and conditions (collectively, "Standard Terms"); Purchasers of this part are entitled to the rights and benefits contained therein. For a full statement of the Standard Terms and the exclusive rights and remedies thereunder, please visit Mini-Circuits' website at www.minicircuits.com/MCLStore/terms.jsp.

REV. OR
M112220
EDR-7475/1U
SXLP-30+
URJ/RAV
121015
Page 1 of 1