

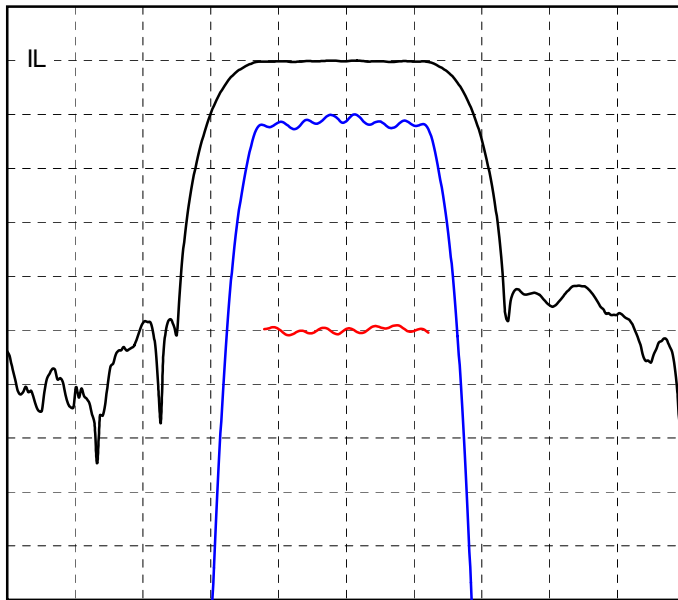
**Specifications**

Parameter	Unit	Min	Typical	Max
Center Frequency (F0)	MHz		357.5	
Bandwidth (B)	MHz		1.7	
-3 dB Bandwidth (B3)	MHz	1.9	2	
-40 db Bandwidth (B40)	MHz		3.1	3.6
Delay (T0)	μsec	2.18	2.203	2.22
Insertion Loss (IL)	dB		21.9	24.5
Amplitude Ripple	dB p-p		0.3	1
Phase Ripple	deg p-p		1.8	3
Rejection	dB	42	46	
Spurious for  t-T0 >.9T0	dB		-45	-42
Substrate Material		36YX-Q		

- Notes:
- Center Frequency (F0) and Bandwidth (B) are defined, not measured.
  - Insertion Loss is the minimum loss for  $|f-F0| < .5B$
  - Ripple spec applies to the  $|f-F0| < .4B$ , and is doubled for  $.4B < |f-F0| < .5B$
  - Rejection spec applies to  $(B40 \text{ Spec} - B/2) < |f-F0| < F0/2$
  - Specifications are at 22C only. Unit will operate undamaged from -54C to 125C with shifts  $dF0 = -x \cdot F0$ ,  $dT0 = x \cdot T0$ , where  $x = 3E-8 \cdot (\text{temperature} - 22C)^2$

**Typical Performance**

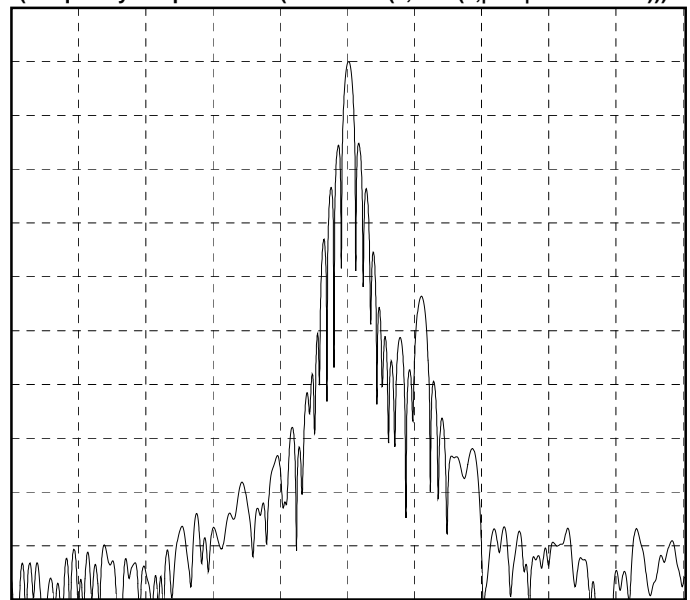
**Frequency Response**  
(Best Fit Linear Phase Removed)



10 dB/div, 1 dB/div, 10 deg/div, 0.625 MHz/div

**Impulse Response**

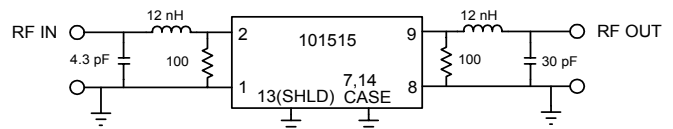
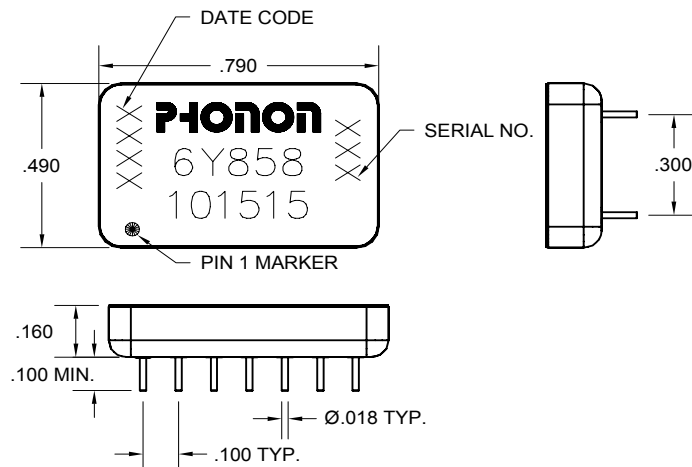
FFT(Frequency Response \* Cos(0.5\*PI\*MIN(1,MAX(0,|f-F0|\*2.0/2.25-1.0)))^2)



10 dB/div, 4.096 us/div

**Package Outline**

**Matching**



Matched S-parameters available at [www.phonon.com](http://www.phonon.com)