

# Plug-In Low Pass Filter

PLP-21.4-75+  
PLP-21.4-75

75Ω DC to 22 MHz

## Maximum Ratings

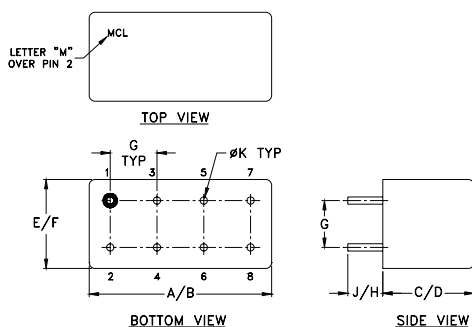
Operating Temperature	-55°C to 100°C
Storage Temperature	-55°C to 100°C
RF Power Input	0.5W max.

Permanent damage may occur if any of these limits are exceeded.

## Pin Connections

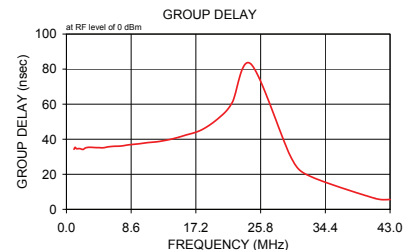
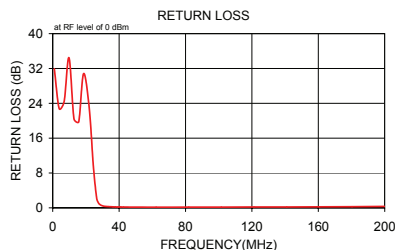
INPUT	1
OUTPUT	8
GROUND	2,3,4,5,6,7
CASE GROUND	2,3,4,5,6,7

## Outline Drawing



## Outline Dimensions (Inch/mm)

A	B	C	D	E	F
.770	.800	.385	.400	.370	.400
19.56	20.32	9.78	10.16	9.40	10.16
G	H	J	K	wt	
.200	.508	.14	.031	grams	
5.08	5.08	3.56	0.79	5.2	

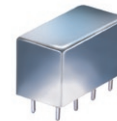


## Features

- rugged welded case, hermetic
- other standard and custom PLP models available with wide selection of fco

## Applications

- test equipment
- lab use
- transmitters/receivers
- military/hi-rel applications



CASE STYLE: A01  
PRICE: \$15.20 ea. QTY (1-9)

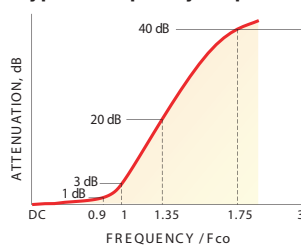
+ RoHS compliant in accordance with EU Directive (2002/95/EC)

The +Suffix identifies RoHS Compliance. See our web site for RoHS Compliance methodologies and qualifications.

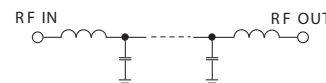
## Low Pass Filter Electrical Specifications

PASSBAND (MHz)	fco (MHz) Nom.	STOPBAND (MHz)		VSWR (:1)	
		(loss > 20 dB)	(loss > 40 dB)	Passband Typ.	Stopband Typ.
(loss < 1 dB)	(loss 3 dB)	(loss > 20 dB)	(loss > 40 dB)	1.7	18
DC-22	24.5	32-41	41-200		

## typical frequency response



## electrical schematic



## Typical Performance Data

Frequency (MHz)	Insertion Loss (dB)		Return Loss (dB)	Frequency (MHz)	Group Delay (nsec)
	$\bar{x}$	$\sigma$			
1.00	0.03	0.02	31.92	1.00	34.25
3.90	0.08	0.02	22.80	1.15	35.37
6.90	0.10	0.02	24.45	1.31	34.65
9.80	0.12	0.02	34.47	1.49	34.57
12.80	0.21	0.03	20.46	1.70	34.69
15.70	0.28	0.04	19.77	1.94	34.46
18.60	0.33	0.03	30.82	2.22	34.18
22.00	0.57	0.05	22.89	2.53	35.06
24.50	1.68	0.34	9.60	2.89	35.37
26.50	6.69	0.88	2.21	3.30	35.39
27.60	10.63	0.91	1.11	3.76	35.25
28.70	14.56	0.86	0.68	4.29	35.22
29.80	18.27	0.80	0.48	4.90	35.14
30.90	21.71	0.76	0.38	5.59	35.69
32.00	24.92	0.72	0.33	6.38	35.99
33.10	27.92	0.68	0.29	7.28	36.15
34.70	31.99	0.65	0.26	8.31	36.84
36.30	35.75	0.64	0.23	9.48	37.34
37.80	39.04	0.63	0.21	10.82	38.10
39.40	42.36	0.66	0.20	12.22	38.68
41.00	45.59	0.70	0.19	13.94	40.03
42.60	48.48	0.68	0.18	15.74	42.23
62.30	86.22	7.37	0.15	17.96	45.34
82.00	84.27	2.85	0.16	20.27	52.21
101.60	80.44	2.15	0.17	22.00	60.69
121.30	85.58	2.35	0.19	24.50	82.98
141.00	83.93	5.17	0.20	29.79	30.12
160.70	87.05	7.84	0.23	32.00	19.62
180.30	84.80	4.04	0.26	41.00	6.24
200.00	86.54	5.90	0.32	43.00	5.59

P.O. Box 350166, Brooklyn, New York 11235-0003 (718) 934-4500 Fax (718) 332-4661 The Design Engineers Search Engine Provides ACTUAL Data Instantly at [minicircuits.com](http://minicircuits.com)

**Mini-Circuits**  
ISO 9001 ISO 14001 AS 9100 CERTIFIED

IF/RF MICROWAVE COMPONENTS

For detailed performance specs & shopping online see web site

Notes: 1. Performance and quality attributes and conditions not expressly stated in this specification sheet are intended to be excluded and do not form a part of this specification sheet. 2. Electrical specifications and performance data contained herein are based on Mini-Circuit's applicable established test performance criteria and measurement instructions. 3. The parts covered by this specification sheet are subject to Mini-Circuits standard limited warranty and terms and conditions (collectively, "Standard Terms"); Purchasers of this part are entitled to the rights and benefits contained therein. For a full statement of the Standard Terms and the exclusive rights and remedies thereunder, please visit Mini-Circuits' website at [www.minicircuits.com/MCLStore/terms.jsp](http://www.minicircuits.com/MCLStore/terms.jsp).

REV. A  
M98898  
PLP-21.4-75  
090820