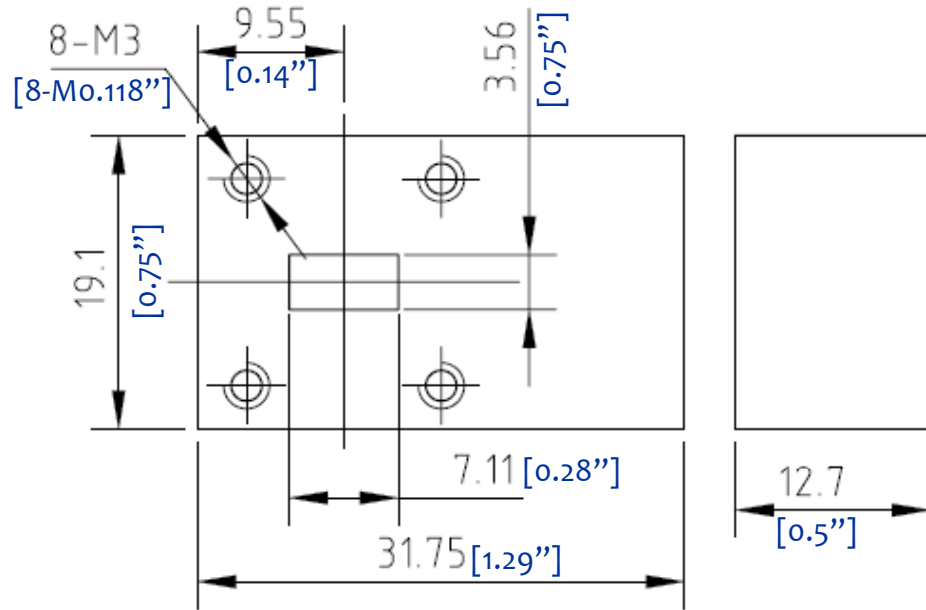


WAVEGUIDE ISOLATOR 15W FORWARD 1W REVERSE


--- **RFWI28B**



| 1.0 Mechanical Specifications | | |
|-------------------------------|----------------------|---|
| 1.1 | Waveguide type | Rectangular Waveguide WR28 |
| 1.2 | Flange type | COVER |
| 1.3 | Flange Holes | Through (As shown) |
| 1.4 | Basis-material | Aluminum |
| 1.5 | External Body Finish | Body painted with gray/black epoxy enamel |

| 2.0 Environment specifications | | |
|--------------------------------|-----------------|----------------------------------|
| 2.1 | Operation Temp. | -32°C~+63°C |
| 2.2 | Storage Temp. | -50°C~+125°C |
| 2.3 | Altitude | 30,000 ft |
| 2.4 | Vibration | 10g rms (15 degree 2KHz) |
| 2.5 | Humidity | 90% RH at 35c, 95%RH at 40 deg c |
| 2.6 | Shock | 20G for 11msec |

| 3.0 Electrical Specifications | | |
|-------------------------------|----------------|--|
| 3.1 | Frequency | 26.5-40GHz |
| 3.2 | Bandwidth | 2GHz 35~36 GHz (As shown) |
| 3.3 | Average Power | 15W (CW) FORWARD 1W REVERSE |
| 3.4 | Insertion Loss | 0.30dB (+/-250MHz) |
| 3.5 | Isolation | 20dB (+/-500MHz) |
| 3.6 | Max. VSWR | 1.20 : 1 (+/-500MHz) |

| | | |
|---|------------|---------------------------|
| PAGE 1 OF 1 | | DATE Sep 23th 2009 |
| <p>PROPRIETARY INFORMATION THE INFORMATION CONTAINED IN THIS DOCUMENT IS THE PROPERTY OF RF-LAMBDA EXCEPT AS SPECIFICALLY AUTHORIZED IN WRITINGS BY RF-LAMBDA. THE HOLDER OF THIS DOCUMENT SHALL KEEP ALL INFORMATION CONTAINED HEREIN CONFIDENTIAL AND SHALL PROTECT SAME IN THE WHOLE OR IN PART FROM DISCLOSURE AND DISSEMINATION OF ALL THIRD PARTIES AND SHALL USE SAME FOR OPERATING AND MAINTENANCE PURPOSES ONLY</p>  <p>RFWI28B WAVEGUIDE ISOLATOR</p> <p>www.rflambda.com</p> | | DESIGN RFPC |
| | | RF-LAMBDA RFPC |
| | | CAD MODEL REVISION 11 |
| | | ASSEMBLY REVISION VS50 |
| | | ASSEMBLY NAME RFLVR11 |
| DRAWING NUMBER D05-1 | | |
| RF-LAMBDA | SIZE LT | SHEETS 1 OF 1 |