

Plug-In Low Pass Filter

PBLP-117+ PBLP-117

50Ω Flat Time Delay DC to 65 MHz

Maximum Ratings

Operating Temperature -55°C to 100°C

Storage Temperature -55°C to 100°C

RF Power Input 0.5W max.

Permanent damage may occur if any of these limits are exceeded.

Pin Connections

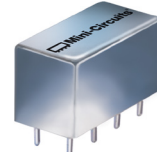
INPUT	1
OUTPUT	8
GROUND	2,3,4,5,6,7
CASE GROUND	2,3,4,5,6,7

Features

- flat group delay for low pulse distortion
- rugged shielded case, hermetic
- other PBLP models available with wide selection of cut-off frequencies

Applications

- linear modulation techniques
- voice transmission applications
- digital communications



CASE STYLE: A01

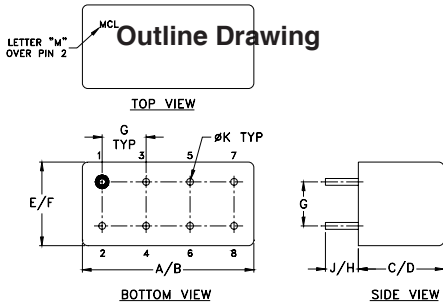
PRICE: \$22.20 ea. QTY: 1-9

+RoHS Compliant

The +Suffix identifies RoHS Compliance. See our web site for RoHS Compliance methodologies and qualifications

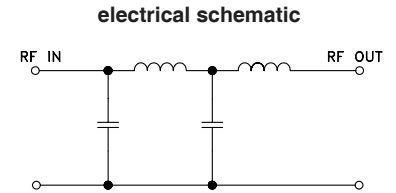
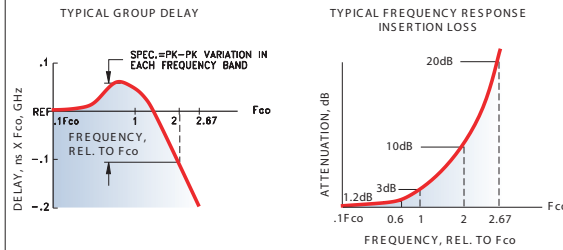
Low Pass Filter Electrical Specifications

PASSBAND (MHz) (loss <1.2 dB) Min.	fco, MHz Nom. (loss 3 dB)	STOPBAND (MHz)		VSWR (:1)		GROUP DELAY VARIATION (nsec)		
		(loss > 10 dB)	(loss > 20 dB)	DC-0.2fco X	DC-0.6fco X	DC-fco X	DC-2fco X	DC-2.67fco X
DC-65	117	234-312	312	1.3:1	2.4:1	0.35	1.4	1.9



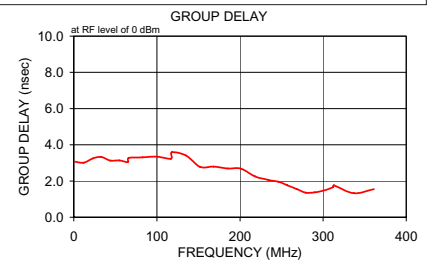
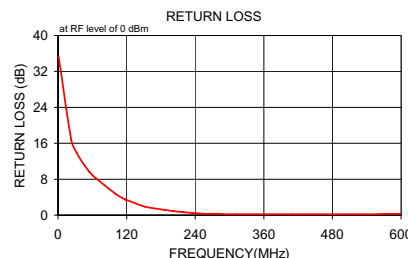
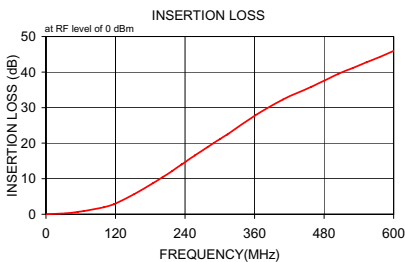
Outline Dimensions (inch/mm)

A	B	C	D	E	F
.770	.800	.385	.400	.370	.400
19.56	20.32	9.78	10.16	9.40	10.16
G	H	J	K	wt	
.200	.20	.14	.031	grams	
5.08	5.08	3.56	0.79	5.2	



Typical Performance Data

Frequency (MHz)	Insertion Loss (dB)		Return Loss (dB)	Frequency (MHz)	Group Delay (nsec)
	\bar{x}	σ			
1.0	0.02	0.1	35.3	1.0	3.075
23.0	0.15	0.1	16.8	12.0	3.015
33.0	0.26	0.1	13.8	23.0	3.252
44.0	0.42	0.1	11.5	33.0	3.331
55.0	0.65	0.1	9.6	44.0	3.126
65.0	0.90	0.1	8.3	55.0	3.140
66.0	0.92	0.1	8.2	65.0	3.044
100.0	1.96	0.1	4.8	66.0	3.271
117.0	2.80	0.1	3.5	83.0	3.303
118.0	2.86	0.1	3.5	100.0	3.348
152.0	5.63	0.1	1.9	117.0	3.233
185.0	8.79	0.2	1.2	118.0	3.593
201.0	10.40	0.2	0.9	135.0	3.409
218.0	12.20	0.2	0.7	152.0	2.782
234.0	13.99	0.2	0.5	168.0	2.798
235.0	14.10	0.2	0.5	185.0	2.689
257.0	16.54	0.3	0.3	201.0	2.681
279.0	18.92	0.4	0.3	218.0	2.252
290.0	20.08	0.5	0.2	234.0	2.060
301.0	21.23	0.5	0.2	235.0	2.038
312.0	22.36	0.6	0.2	246.0	1.965
313.0	22.46	0.6	0.2	257.0	1.759
361.0	27.82	0.7	0.2	268.0	1.562
409.0	32.27	0.9	0.2	279.0	1.358
457.0	35.79	1.0	0.2	290.0	1.372
505.0	39.52	1.3	0.2	301.0	1.483
529.0	41.10	1.4	0.2	312.0	1.659
553.0	42.74	1.6	0.2	313.0	1.765
577.0	44.30	1.5	0.3	337.0	1.324
600.0	45.95	2.0	0.3	361.0	1.555



Notes

- Performance and quality attributes and conditions not expressly stated in this specification document are intended to be excluded and do not form a part of this specification document.
- Electrical specifications and performance data contained in this specification document are based on Mini-Circuit's applicable established test performance criteria and measurement instructions.
- The parts covered by this specification document are subject to Mini-Circuit's standard limited warranty and terms and conditions (collectively, "Standard Terms"); Purchasers of this part are entitled to the rights and benefits contained therein. For a full statement of the Standard Terms and the exclusive rights and remedies thereunder, please visit Mini-Circuit's website at www.minicircuits.com/MCLStore/terms.jsp



www.minicircuits.com P.O. Box 350166, Brooklyn, NY 11235-0003 (718) 934-4500 sales@minicircuits.com

REV. A
M111708
PBLP-117
140813