

N/MALE-N/FEMALE RIGHT ANGLE ADAPTER

SM4536

SPECIFICATIONS

ELECTRICAL

FREQUENCY: 0-11 GHZ

IMPEDANCE: 50 OHMS

VSWR: 1.47:1 MAX @ 11 GHZ

MECHANICAL

MATERIALS BODY: TRIMETAL PLATED BRASS

MATERIALS CONTACTS MALE BRASS; FEMALE BeCu

PLATING CONTACTS: Au PER MIL-G-45204

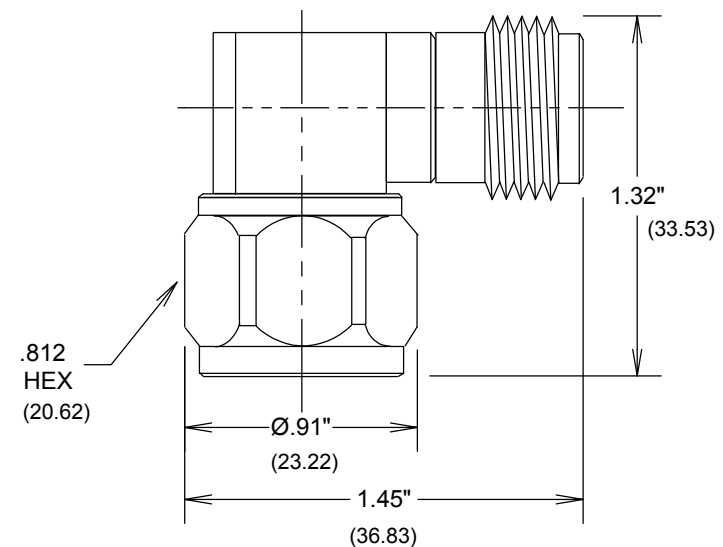
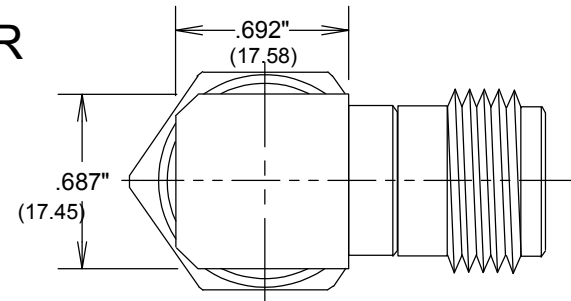
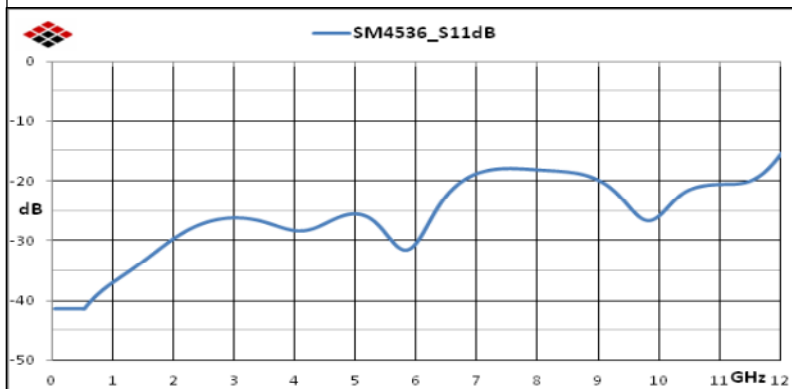
INSULATOR: TEFLON

INTERFACE: MIL-STD-348A

TEMPERASTURE: -65 TO +165° C

ROHS COMPLIANT

MEAUREMENTS BELOW ARE TYPICAL



FAIRVIEW MICROWAVE INC.

ALLEN, TX 75013 WWW.FAIRVIEWMICROWAVE.COM

TITLE

**N/MALE-N/FEMALE
RIGHT ANGLE ADAPTER**

SIZE

A

CAGE CODE

DWG NO

SM4536

REV

A

SCALE

SHEET

ALL DIMENSIONS IN inches(MM) Typical