

SPECIFICATIONS

ORDERING INFORMATION

PLUG PN# 4601-6218-21
 JACK PN# 4602-6218-21

ELECTRICAL

FREQUENCY RANGE _____ DC TO 18 GHz

VSWR(MAX) _____ DC-4 GHz _____ 1.15
 4 - 12.4 GHz _____ 1.25
 12.4-18 GHz _____ 1.35

POWER _____ 2 WATTS (AVG)
 500 WATTS (PEAK)

* 5 µSec PULSE WIDTH @ 0.01 % DUTY CYCLE

IMPEDANCE: _____ 50 OHMS

MECHANICAL

OPERATING TEMP RANGE _____ -65 TO +125°

Materials

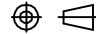
- Outer Conductor -Brass, Tri-Metal Alloy (White Bronze) Plated.
- Center Conductor -Beryllium Copper, Gold Plated
- Dielectric -Teflon per ASTM D1710.
- Resistor - Thin Film Hybrid

CONNECTORS ARE TO QMA INTERFACE AND MATE WITH ALL QMA MANUFACTURERS' STANDARD INTERFACES

IP68 version is available - contact factory.
 Designs up to 10 Watts and Lower Frequencies available.

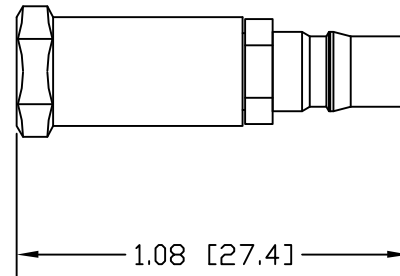
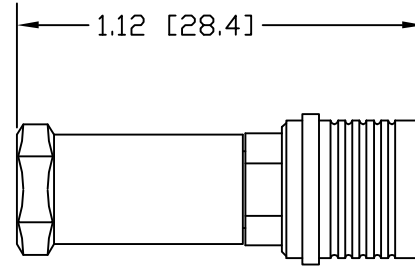
**PRODUCTION
RELEASE**


NOTE:
THIS DRAWING INCORPORATES
THIRD ANGLE PROJECTION.



INTERPRET IAW ANSI Y14.5-1998

REVISIONS			
LTR	DESCRIPTION	DATE	APPROVED
-	RELEASED	3/10/2009	D. Saunders



DRAWING PRACTICES PER ANSI-Y-14.5 MIL-STD-100 & 2000	
DIMENSIONS ARE IN INCHES AND APPLY BEFORE/AFTER PROCESSING	
SURFACE ROUGHNESS INCHES	
FINISH	SEE NOTES
MATERIAL	SEE NOTES

UNLESS OTHERWISE SPECIFIED TOLERANCES IN:		
DECIMALS	INCH	MM
.X"	.05"	[.76]
.XX"	.03"	[.25]
.XXX"	.03	[.127]
.XXXX"		
ANGLES		
UNLESS OTHERWISE NOTED DIAS CONCENTRIC <.003 T.I.R.		

DRAWN	M. TURNER	DATE	2/23/2009
CHECKED		DATE	
ENGINEER APPR.		DATE	
THESE DRAWINGS AND SPECIFICATIONS ARE THE PROPERTY OF XMA CORP. OR OMNI SPECTRA AND SHALL NOT BE REPRODUCED, COPIED NOR USED - IN WHOLE OR IN PART - AS A BASIS FOR THE MANUFACTURE OR SALE OF OTHER ITEMS WITHOUT THE EXPRESS WRITTEN PERMISSION OF XMA CORP.			

XMA Powered by:
 Omni Spectra®
 Phone: 603-222-2256 Fax: 603-222-2259
 150 Dow Street, Manchester, NH 03101

TITLE
**TERMINATION, 2 WATT
 QMA CONNECTOR SERIES**

SIZE	CAGE CODE	DRAWING NUMBER
B	3HT76	460X-6218-21
SCALE	3:1	SHEET 1 OF 1