



ROTARY KNOB MANUAL CONTROL STEP ATTENUATOR (DC-2GHz 100dB RANGE)

Product description

- Very small package and broadband performance
- Continuous variable attenuation during operation
- Excellent Repeatability and Long Life Switch
- Low Deviation from Nominal Value
- 50Ω impedance standard upon request
- Higher average power is available upon request
- Custom Configurations Available Upon Request.



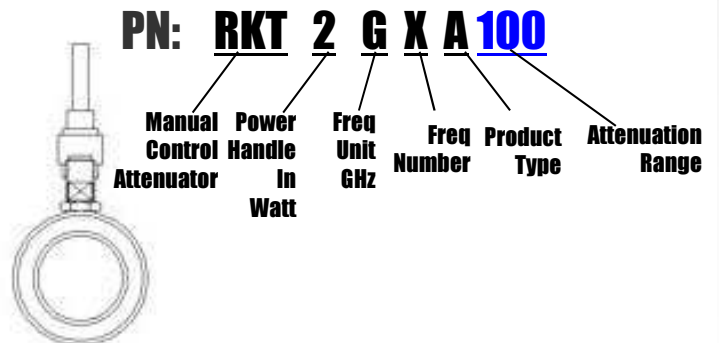
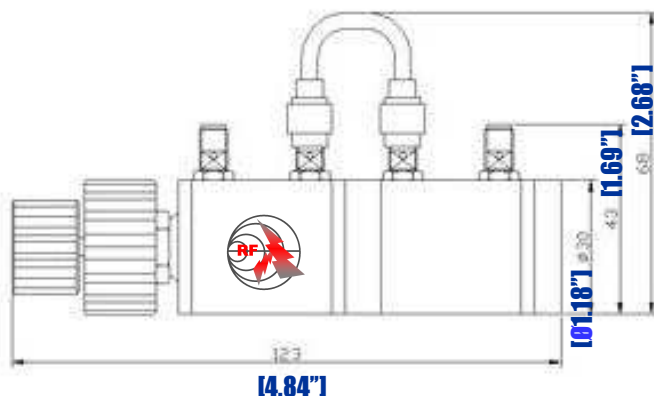
Applications:

Include Communication, 3G, Digital Transmission, Radar, Military, Broadcast & Television, science & Research department etc.

Part Number	Frequency	Power (Watts)	Attenuation Range (dB)	Attenuation Step (dB)	VSWR max.	Insertion Loss (dB)	Accuracy (dB)
RKT2G2A100	DC-2GHz	2	100	1	1.35	<0.80	± 0.3dB (≤10dB) ± 0.8dB (≤60dB) ± 1.5dB (≤70dB) ± 4% (>70dB)

Connector: SMA type, weight: 435g

Temperature (Operational): -10° C~+50° C (Storage) -40° C~+70° C



MANUAL CONTROL ROTARY ATTENUATOR (DC-2GHz 100dB RANGE)

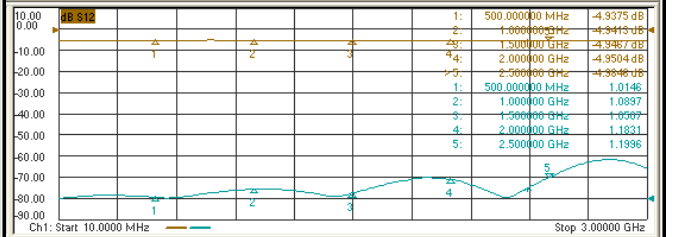
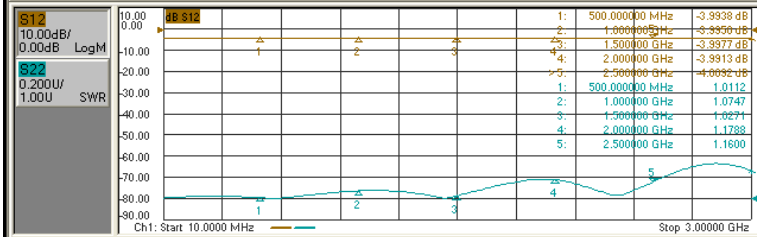
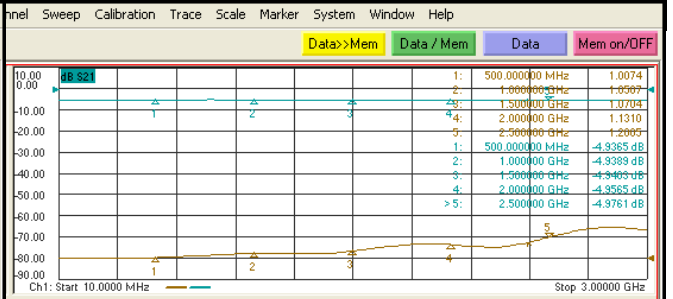
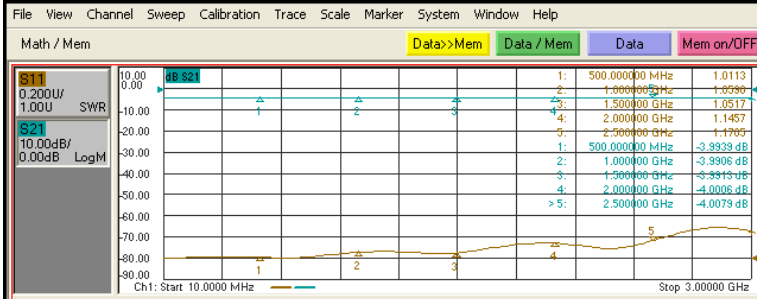
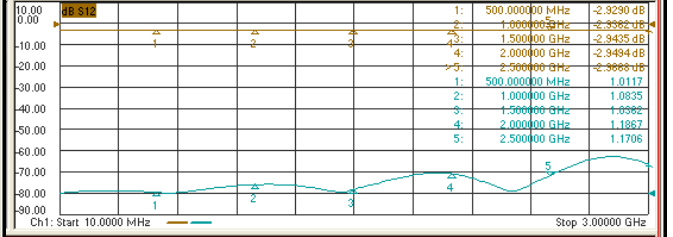
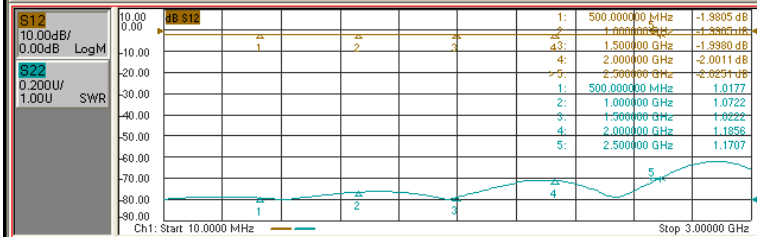
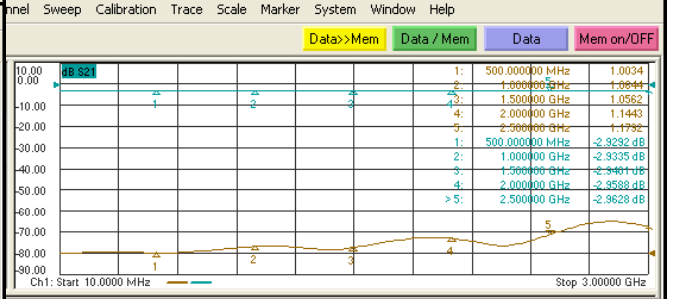
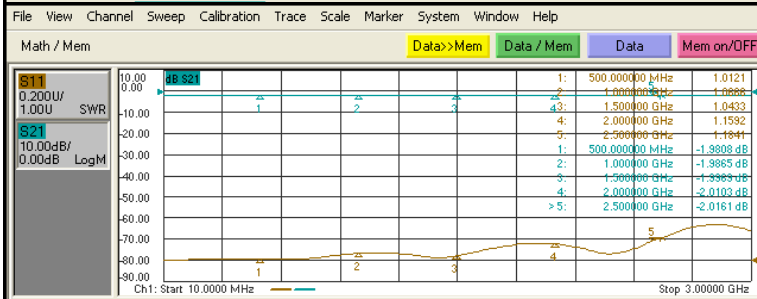
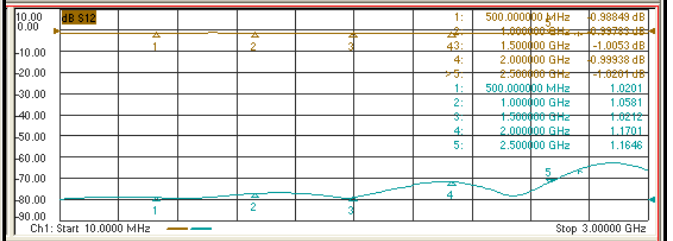
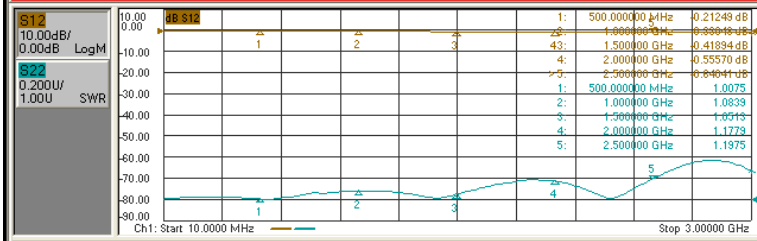
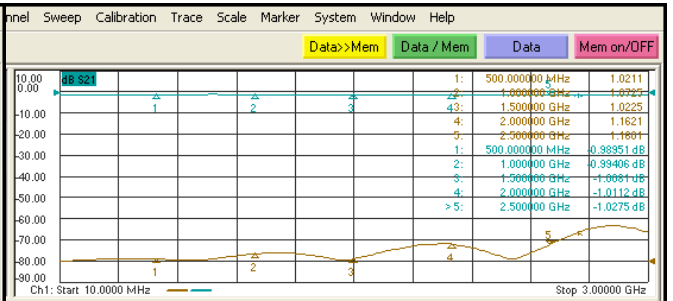
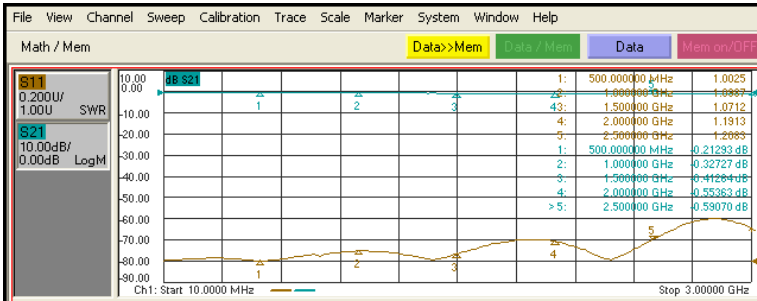


RF-LAMBDA

The power beyond expectations

RKT2G2A100

MANUAL CONTROL ROTARY ATTENUATOR (DC-2GHz 100dB RANGE)



Status CH 1: S21 / M C: 2-Port LCL

Status CH 1: S21 / M C: 2-Port LCL

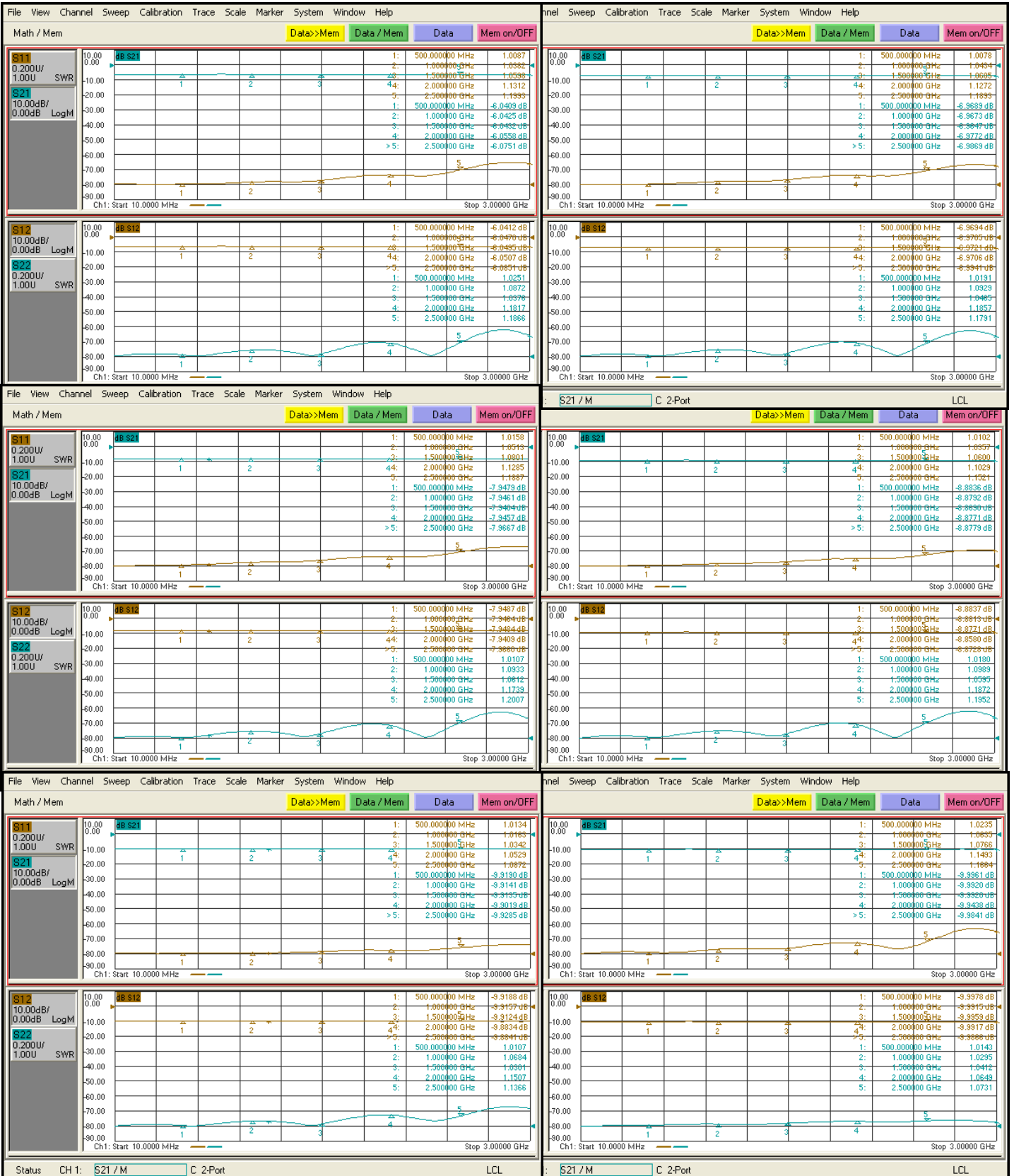


RF-LAMBDA

The power beyond expectations

RKT2G2A100

MANUAL CONTROL ROTARY ATTENUATOR (DC-2GHz 100dB RANGE)



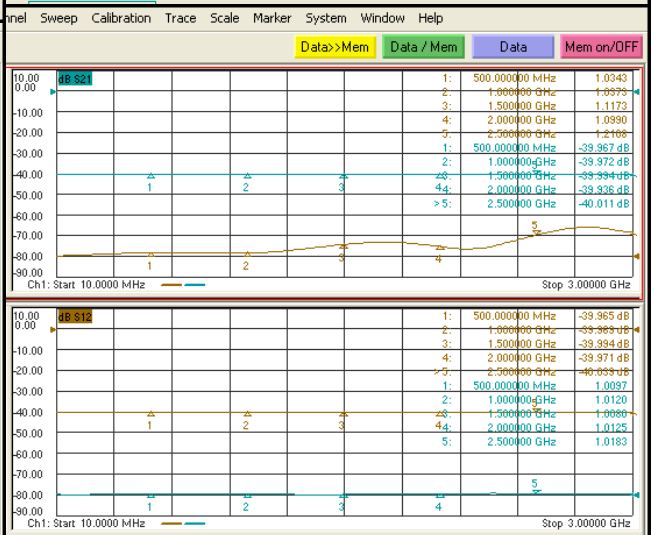
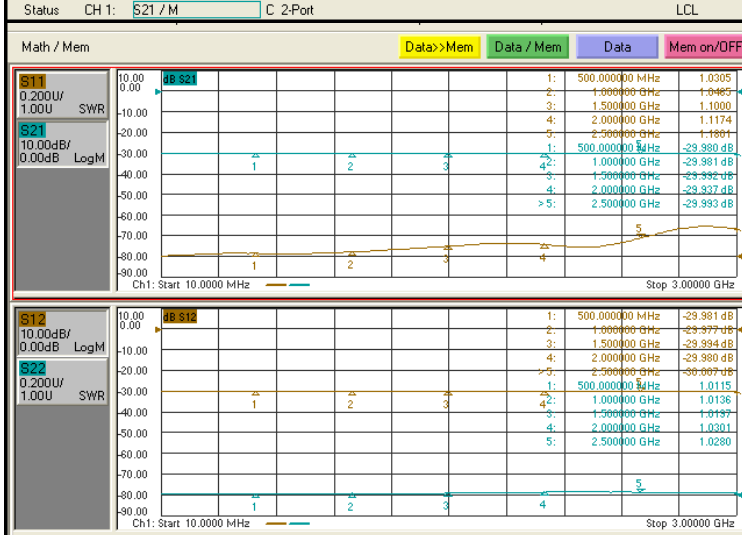
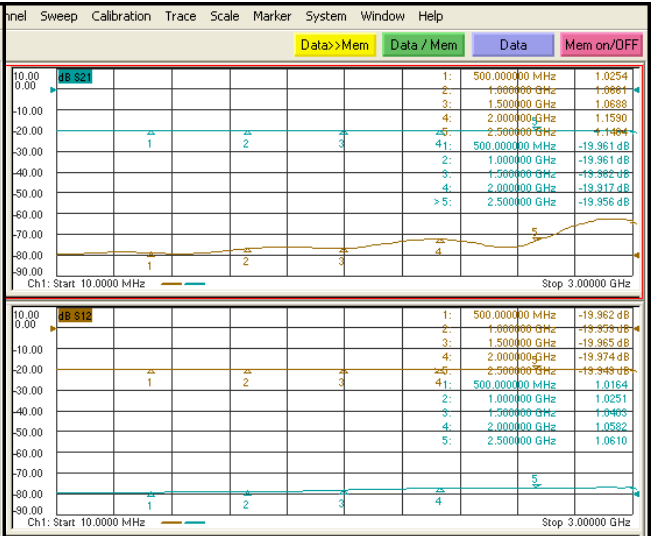
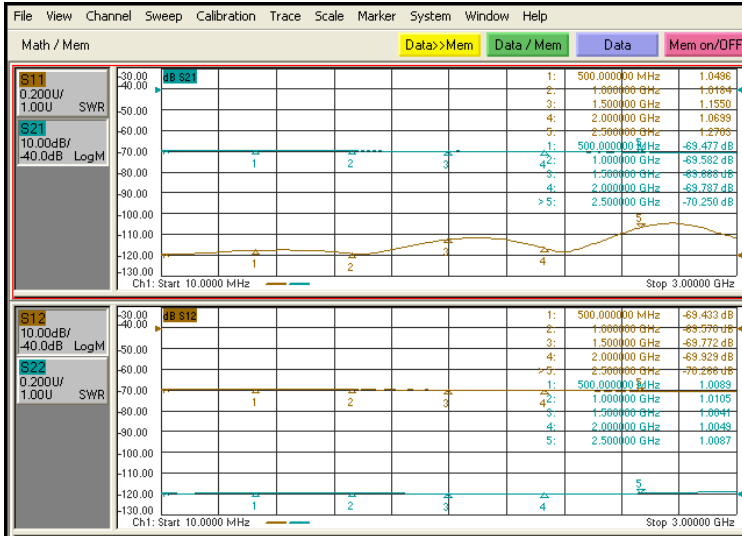


RF-LAMBDA

The power beyond expectations

RKT2G2A100

MANUAL CONTROL ROTARY ATTENUATOR (DC-2GHz 100dB RANGE)





RF-LAMBDA

The power beyond expectations

RKT2G2A100

MANUAL CONTROL ROTARY ATTENUATOR (DC-2GHz 100DB RANGE)

