

# DC BLOCKING CONNECTORS

1.85mm, 25 kHz - 50 GHz, 25 Volts

## SPECIFICATIONS:

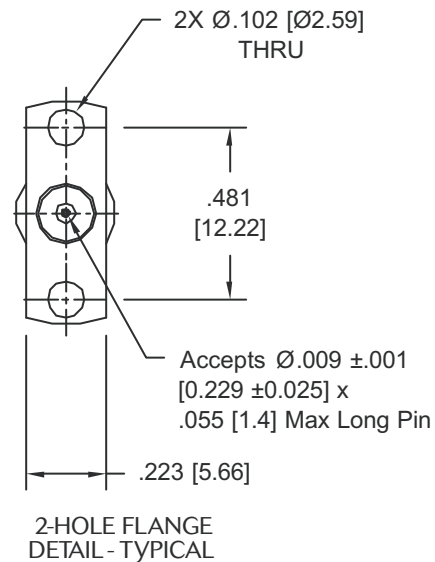
Models: 8537VF, 8537VM

**RoHS**  
Compliant

Electrical:	
Frequency Range	25 KHz - 50 GHz
Insertion Loss	
100 KHz - 12.4 GHz	0.55 dB Typ. 0.75 dB Max.
12.4 - 32 GHz	0.75 dB Max.
32 - 50 GHz	1.00 dB Typ. 1.20 dB Max.
VSWR	
150 KHz - 32 GHz	1.35:1 Max.
32 - 50 GHz	1.50:1 Max.
Impedance	50 Ohms
Working Voltage	25 Volts Max.
Bandwidth (-3 dB)	<25 KHz to >50 GHz
Nominal Capacitance	100nF
Mechanical:	
1.85mm Connectors	Passivated Stainless Steel
Mates with 2.4mm & V* Connectors	
Conductors	Gold Plated Beryllium Copper

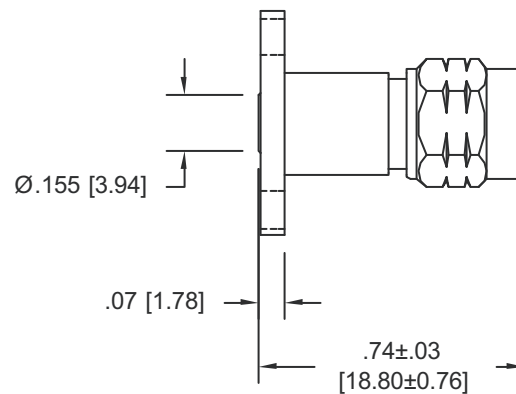
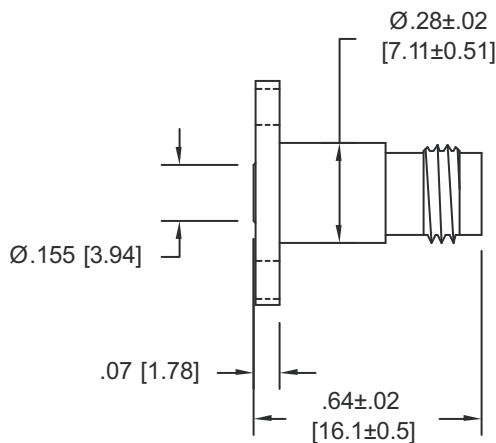
\*V is a trademark of Anritsu Corp.

**AEROFLEX**  
A passion for performance.



Model Number: **8537VF**  
1.85mm FEMALE

Model Number: **8537VM**  
1.85mm MALE



Mounting Surface Should be Flat IAW Inmet Application note APPN-1010 and when Tightening Please Follow Method Outlined therein for Proper High Frequency Performance.

Note: Dimensions in Brackets are Expressed in Millimeters and are for Reference Only.

8537V: REV B

**AEROFLEX**  
INMET

Aeroflex / Inmet, Inc. • 300 Dino Drive, Ann Arbor, MI 48103 • U.S.A.  
888-244-6638 or 734-426-5553 • FAX: 734-426-5557  
www.aeroflex.com/inmet • inmet-sales@eroflex.com