

Cavity Bandpass Filter

ZVBP-11G3+

50Ω 11200 to 11400 MHz



CASE STYLE: PU2164

The Big Deal

- Low insertion loss, 2dB typical
- Broad Stopband performance upto 20GHz
- Fast roll-off
- Connectorized package
- Small size

Product Overview

ZVBP-11G3+ is a 50Ω cavity filter for X band. Frequency band of this filter is used in satellite and radar applications..

Key Features

Feature	Advantages
Low loss in passband	This filter has low loss in passband
Sharp rejection	This filter has sharp rejection in transition region due to higher order design
Broad Stopband performance	This filter has broad stopband performance upto 20GHz
Connectorized package and small size	Connectorized package is easy to interface with other devices and well suited for test setups. Package size is so small

Notes

- A. Performance and quality attributes and conditions not expressly stated in this specification document are intended to be excluded and do not form a part of this specification document.
B. Electrical specifications and performance data contained in this specification document are based on Mini-Circuit's applicable established test performance criteria and measurement instructions.
C. The parts covered by this specification document are subject to Mini-Circuits standard limited warranty and terms and conditions (collectively, "Standard Terms"); Purchasers of this part are entitled to the rights and benefits contained therein. For a full statement of the Standard Terms and the exclusive rights and remedies thereunder, please visit Mini-Circuits' website at www.minicircuits.com/MCLStore/terms.jsp



Bandpass Filter

ZVBP-11G3+

50Ω 11200 to 11400 MHz



CASE STYLE: PU2164
 Connectors SMA-F SMA-F
 Model ZVBP-11G3-S+

Features

- Low insertion loss, 2 dB typical
- Broad Stopband performance upto 20GHz
- Fast roll-off
- Connectorized package
- Small size

Applications

- Satellite
- Radar

Electrical Specifications at 25°C

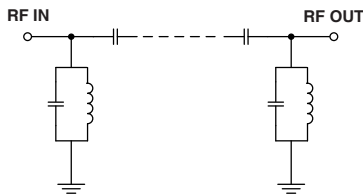
Parameter	F#	Frequency (MHz)	Min.	Typ.	Max.	Unit
Pass Band	Center Frequency	-	-	11300	-	MHz
	Insertion Loss	F1-F2	11200-11400	-	2	3 dB
	VSWR	F1-F2	11200-11400	-	1.4	1.5 :1
Stop Band, Lower	Insertion Loss	DC-F3	DC - 11030	40	48	- dB
	VSWR	DC-F3	DC - 11030	-	40	- :1
Stop Band, Upper	Insertion Loss	F4-F5	11580-20000	40	48	- dB
	VSWR	F4-F5	11580-20000	-	7	- :1

Maximum Ratings

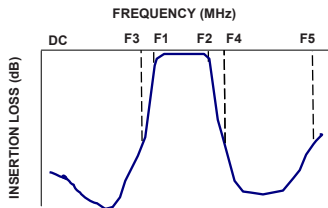
Operating Temperature	-40°C to 85°C
Storage Temperature	-55°C to 100°C
RF Power Input	10 W max.

Permanent damage may occur if any of these limits are exceeded.

Functional Schematic



Typical Frequency Response

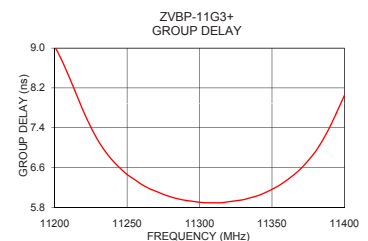
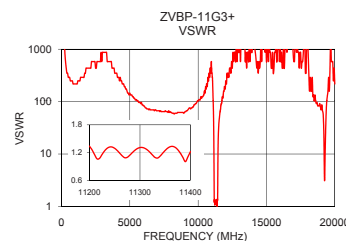
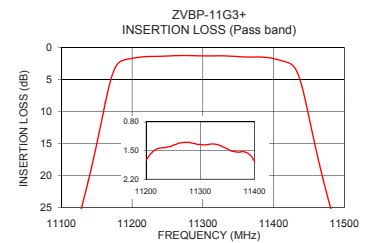
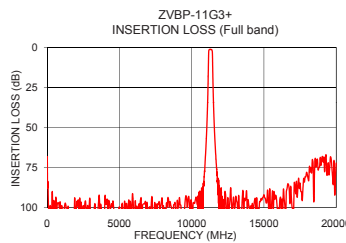


Typical Performance Data at 25°C

Frequency (MHz)	Insertion Loss (dB)	VSWR (:1)	Frequency (MHz)	Group Delay (nsec)
10	68.19	1737.18	11200	9.04
500	96.68	289.53	11210	8.42
3000	104.04	868.59	11220	7.72
7050	103.71	66.82	11230	7.14
9500	101.21	75.53	11240	6.74
11030	53.60	289.53	11250	6.46
11115	30.18	75.53	11260	6.26
11140	19.96	31.03	11270	6.12
11175	3.44	1.94	11280	6.01
11180	2.55	1.34	11290	5.94
11200	1.74	1.34	11300	5.90
11300	1.35	1.31	11310	5.89
11400	1.77	1.22	11320	5.91
11420	2.39	1.33	11330	5.95
11430	3.21	1.55	11340	6.03
11470	20.55	18.30	11350	6.16
11495	30.33	28.96	11360	6.34
11580	52.74	56.04	11380	6.92
16000	100.46	1737.18	11390	7.42
20000	72.31	217.15	11400	8.05

+RoHS Compliant

The +Suffix identifies RoHS Compliance. See our web site for RoHS Compliance methodologies and qualifications



Notes

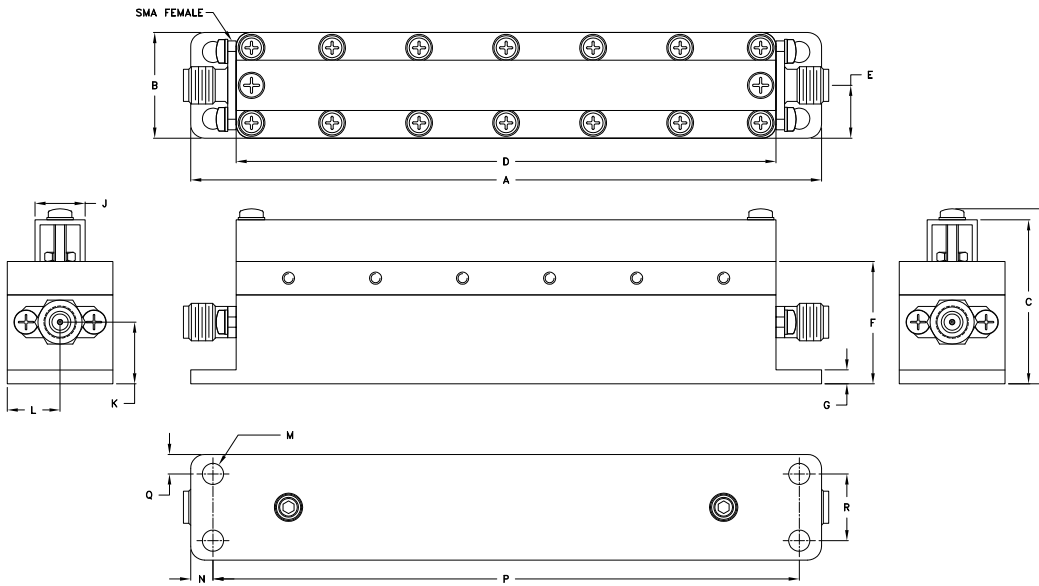
- Performance and quality attributes and conditions not expressly stated in this specification document are intended to be excluded and do not form a part of this specification document.
- Electrical specifications and performance data contained in this specification document are based on Mini-Circuit's applicable established test performance criteria and measurement instructions.
- The parts covered by this specification document are subject to Mini-Circuits standard limited warranty and terms and conditions (collectively, "Standard Terms"); Purchasers of this part are entitled to the rights and benefits contained therein. For a full statement of the Standard Terms and the exclusive rights and remedies thereunder, please visit Mini-Circuits' website at www.minicircuits.com/MCLStore/terms.jsp



Coaxial Connections

INPUT	SMA-FEMALE
OUTPUT	SMA-FEMALE

Outline Drawing



Outline Dimensions (inch / mm)

A	B	C	D	E	F	G	H	J
4.47	.75	1.16	3.82	.37	.87	.10	1.24	.36
113.43	19.00	29.50	97.07	9.50	22.00	2.50	31.48	9.02
K	L	M	N	P	Q	R		Wt.
.44	.37	.150	.16	4.15	.14	.47		grams
11.10	9.50	3.81	4.00	105.43	3.50	12.00		113

Notes

- A. Performance and quality attributes and conditions not expressly stated in this specification document are intended to be excluded and do not form a part of this specification document.
- B. Electrical specifications and performance data contained in this specification document are based on Mini-Circuit's applicable established test performance criteria and measurement instructions.
- C. The parts covered by this specification document are subject to Mini-Circuits standard limited warranty and terms and conditions (collectively, "Standard Terms"); Purchasers of this part are entitled to the rights and benefits contained therein. For a full statement of the Standard Terms and the exclusive rights and remedies thereunder, please visit Mini-Circuits' website at www.minicircuits.com/MCLStore/terms.jsp

