



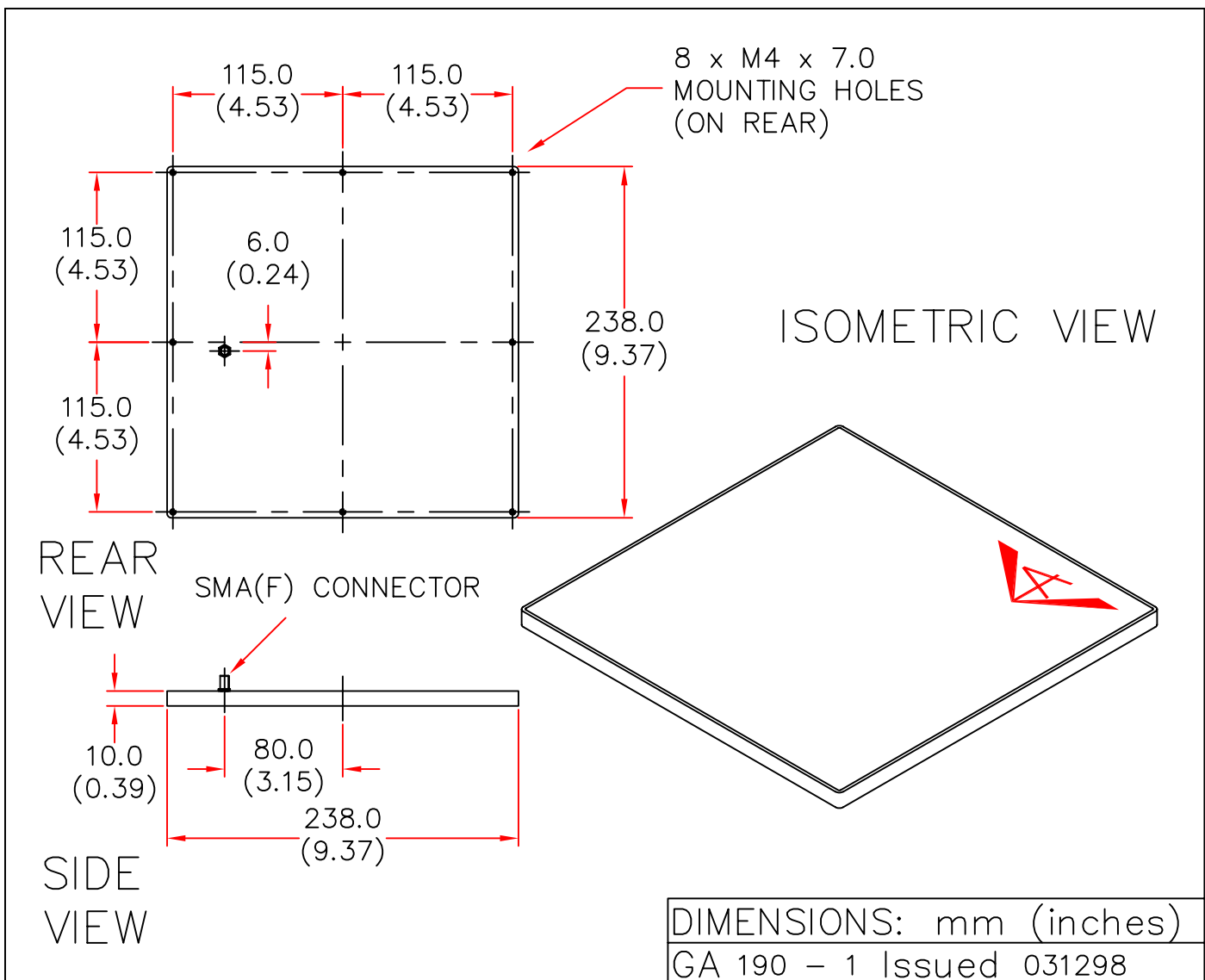
EUROPEAN ANTENNAS



FLAT PANEL ANTENNA

MODEL: FPA19-39V-D1/190

FREQUENCY: 3.6 - 4.1 GHz	GAIN: 19 dBi
POLARISATION: Linear (Vertical)	BEAMWIDTH: 20° x 20°
CROSS POLAR: 20 dB	VSWR: 1.5 : 1
POWER RATING: 10 W	FRONT TO BACK: 30 dB
TEMPERATURE: -20°C to +50°C	MASS: 1.2 Kg/2.64 lbs
RADOME: Glass Fibre/Gloss White	WIND LOADING: 9.2Kg/20.2lbs@100mph



EUROPEAN ANTENNAS LTD.

TEL: +44 (0)1638 731888

LAMBDA HOUSE, CHEVELEY,
NEWMARKET, SUFFOLK, CB8 9RG,
UNITED KINGDOM.

FAX: +44 (0)1638 731999

European Antennas Ltd. has a policy of continuous development and therefore stress that the data contained on this sheet should be used for guidance only.