

MINISMP-M EDGE LAUNCH FULL DETENTE

SC5412

SPECIFICATIONS

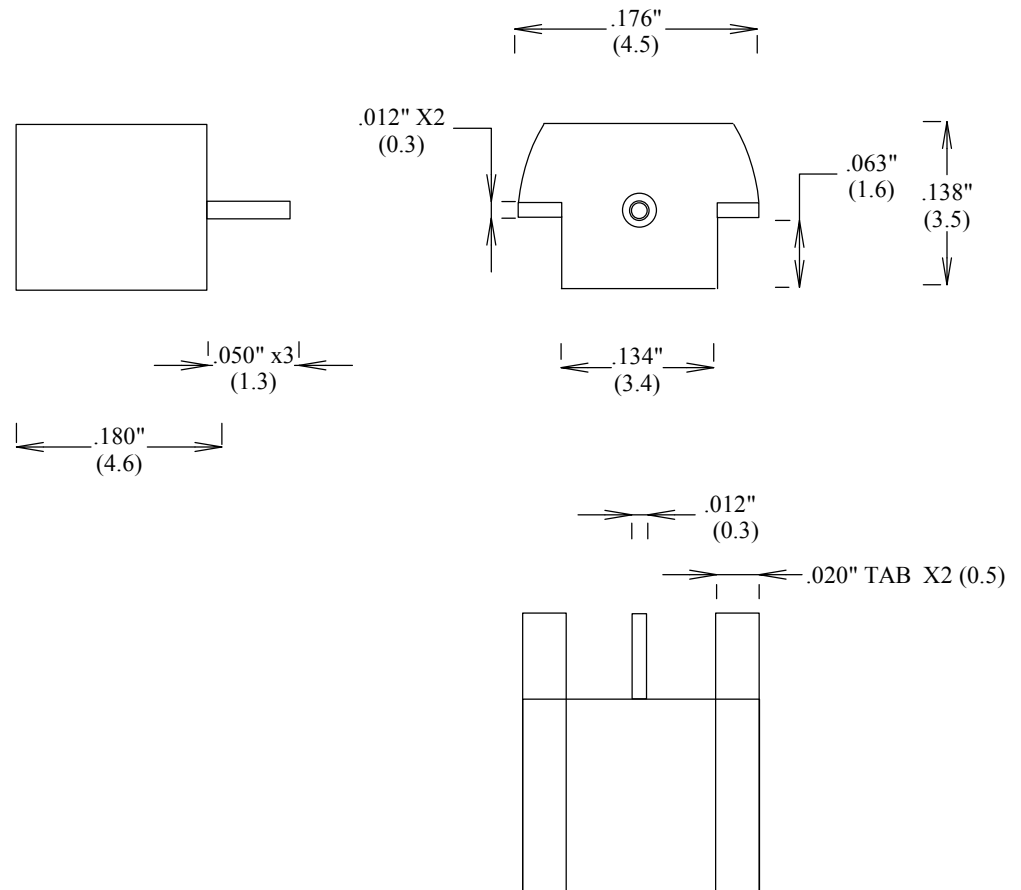
ELECTRICAL:

FREQUENCY: 0-40 GHZ
IMPEDANCE: 50 OHMS

MECHANICAL:

MATERIAL BODY: BeCu
CENTER CONTACTS: BeCu
PLATING: Au PER MIL-G-45204
INSULATOR: PTFE
OP. TEMP RANGE: -65° to +165°C
ROHS COMPLIANT

FORCE TO ENGAGE: 4.0 LBS MAX
FORCE TO DISENGAGE: 2.5 LBS MIN



FAIRVIEW MICROWAVE INC.

ALLEN, TX 75013 WWW.FAIRVIEWMICROWAVE.COM

TITLE

**MINISMP-M EDGE LAUNCH
FULL DETENTE**

SIZE	CAGE CODE	DWG NO	REV
A	3FKR5	SC5412	B
SCALE	SHEET		

ALL DIMENSIONS IN inches(mm) Typical