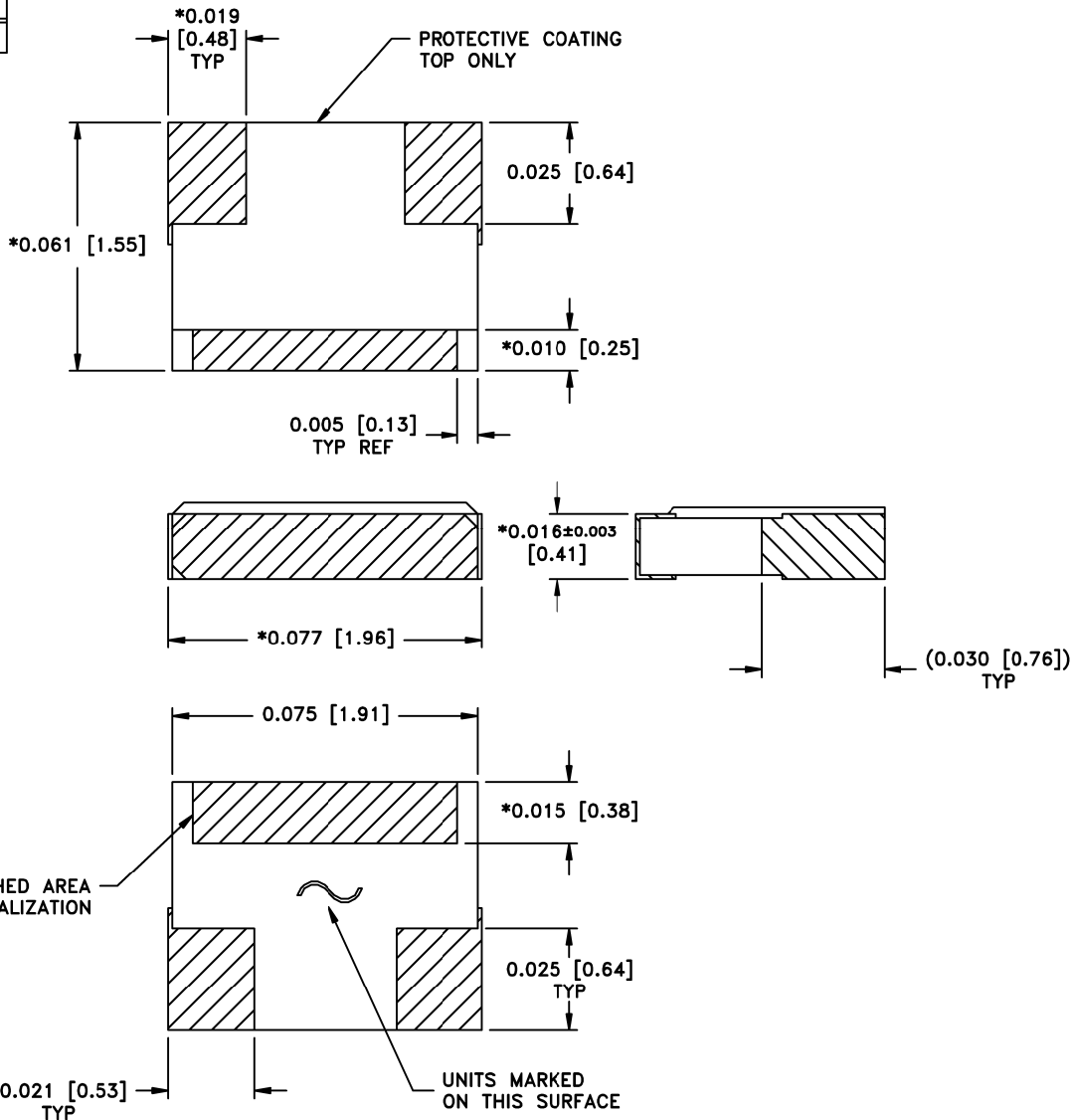


PART ID REF

HR05XXXW3S



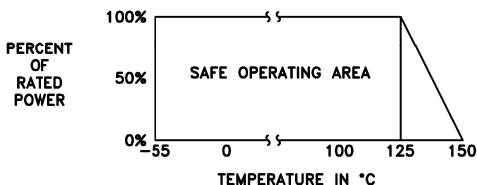
MECHANICAL SPECIFICATIONS:

SUBSTRATE:
 MATERIAL - ALUMINA 96%, MIL-I-10.
 TERMINAL:
 MATERIAL - THICK FILM, NICKEL BARRIER,
 SOLDER COATED.
 RESISTIVE ELEMENT:
 MATERIAL - THIN FILM, TANTALUM NITRIDE.

* DIMENSIONS APPLY BEFORE SOLDER. ALLOW
 0.015 MAX FOR ALL PRETINNED SURFACES.

METRIC EQUIVALENTS GIVEN IN [mm]
 FOR REFERENCE INFORMATION ONLY

POWER RATING AND DERATING



8851 SW OLD KANSAS AVE
 STUART, FL 34997
 PHONE NO. (772)286-9300
 FAX NO. (772)283-5286

UNLESS OTHERWISE
 SPECIFIED DIMENSIONS
 ARE IN INCHES
TOLERANCES
 FRACT --- ---
 ANG --- ---
 XX --- ---
 XXX ±0.005
 XXXX --- ---

THESE DRAWINGS AND SPECIFICATIONS ARE THE PROPERTY OF EMC TECHNOLOGY INC AND SHALL NOT BE DUPLICATED
 OR USED AS BASIS FOR THE MANUFACTURE OR SALE OF PARTS OR DEVICES WITHOUT PERMISSION.

CAGE CODE 24602	SCALE 32:1	DRAWN BY JG 9/28/09	CHECKED BY	APPROVED BY
REV D	CHANGE NOTICE EN 09-E1001	DRAWING NO 1010005000	SHEET 2 OF 2	