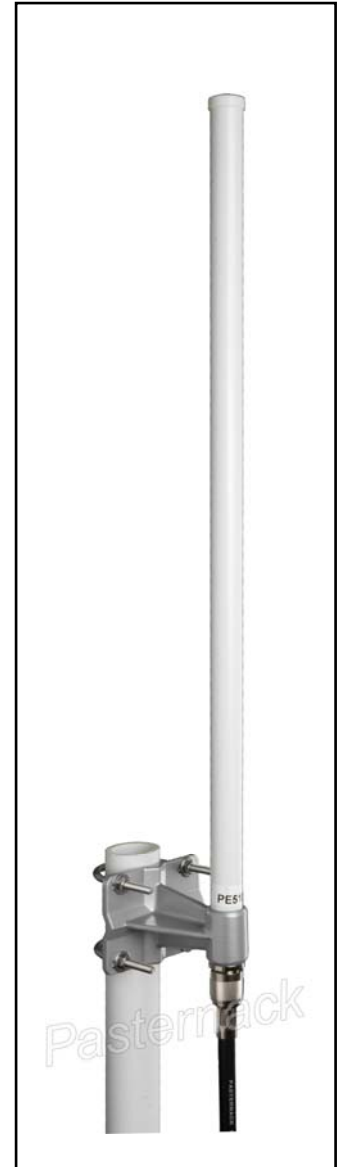


Product Features

- 2400 MHz
- 50W power handling
- High Gain, 8dBi Omni Radiation Pattern
- Rugged Fiberglass Radome

Specifications ⁽¹⁾

Parameter	Value	Units	Description
Minimum Frequency	2400	MHz	
Maximum Frequency	2500	MHz	
Impedance	50	Ohms	
Gain	8	dBi	Max Gain
Horiz Beamwidth	360	Deg	
Vert Beamwidth	15	Deg	
Polarization	Vert		Vertical Polarization
Max Input Pwr	50	W	Watts(CW Max)
Maximum VSWR	<2.0	ratio	Between Min and Max Freq
Length	500	mm	20 Inches
Diameter	19	mm	.75 Inches
Mast Diameter	30-50	mm	Mast Mounting Info
Weight	.36	Kg	.8 Lbs
Connector Type		N(f)	N-Type Female



Ordering Information

Part Number	Description
PE51061	2400-2500 MHz 8dBi Gain Omni Antenna with N-female connector

(1) Pasternack reserves the right to change specifications or information without notice.

(2) All specifications "typical"