

Drop-in circulators / isolators

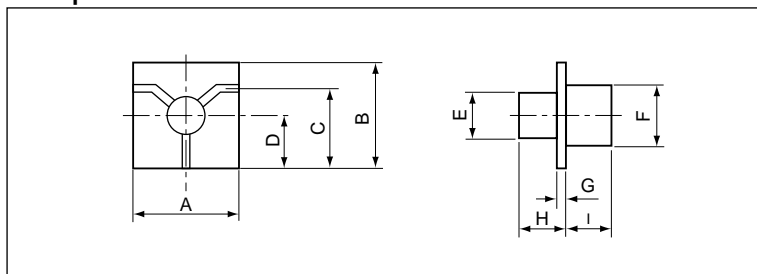
Substrate type circulators (17.7 to 77GHz)

Specifications

Part No.	Frequency range (GHz)	Isolation (dB)min.	Insertion loss (dB)max.	Reflection loss (dB)min.	V.S.W.R. (50Ω)max.	Handling power (W,CW)	Operating temp. range (°C)	Dimensions(mm)									Document No. MW-C-○○○
								A	B	C	D	E	F	G	H	I	
CK-□19535A301	17.7 ~ 21.2	17	0.8	17	1.33	5.0	-10 ~ +60	6	6	4.4	3	1.5	4.2	0.38	1.7	4	048
CK-□22428A201	21.0 ~ 23.8	17	0.8	17	1.33	2.0	-30 ~ +60	5	5	3.4	2.5	2.5	—	0.38	3	—	140
CK-□22523A201	21.3 ~ 23.6	17	0.8	17	1.33	5.0	-10 ~ +60	5	5	3.4	2.5	3.5	3.5	0.38	2.9	3.5	021
CK-□26530A201	25.0 ~ 28.0	17	0.8	17	1.33	5.0	-10 ~ +60	5	5	3.4	2.5	1	3.2	0.38	1.7	4	020
CK-□26530A202	25.0 ~ 28.0	17	0.8	17	1.33	2.0	-30 ~ +60	5	5	3.4	2.5	2	—	0.38	2.5	—	142
CK-□26530A203	25.0 ~ 28.0	17	0.8	17	1.33	2.0	-30 ~ +60	5	5	3.4	2.5	2	—	0.254	2.3	—	143
CK-□29040A201	27.0 ~ 31.0	17	0.8	17	1.33	5.0	-10 ~ +60	5	5	3.4	2.5	1	3.2	0.254	1.6	4	019
CK-□36540A101	34.5 ~ 38.5	17	0.8	17	1.33	2.0	-10 ~ +60	4	4	2.9	2	1	1.8	0.254	1.3	3	107
CK-□38325A101	37.0 ~ 39.5	17	1.0	17	1.33	2.0	-10 ~ +60	4	4	2.9	2	1	1.8	0.254	1.3	3	108
CK-□42020A101	40.5 ~ 42.5	17	1.5	17	1.33	2.0	-10 ~ +60	4	4	2.9	2	1	1.8	0.254	1.3	3	109
CK-□59515A101	58.75 ~ 60.25	15	2.0	15	1.43	2.0	-10 ~ +60	4	4	2.7	2	1	1.8	0.2	2	3.5	103
CK-□60515A101	59.75 ~ 61.25	15	2.0	15	1.43	2.0	-10 ~ +60	4	4	2.7	2	1	1.8	0.2	2	3.5	120
CK-□76510A101	76.0 ~ 77.0	15	2.5	15	1.43	1.0	-10 ~ +60	3	3	2.2	1.5	—	1.8	0.18	—	3	123

Remarks) □ : Rotational direction

Shapes and dimensions



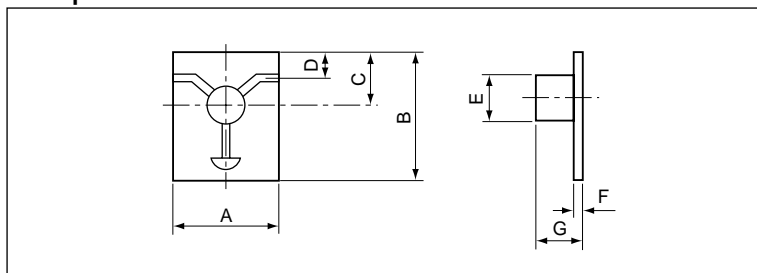
Substrate type isolators (17.7 to 28GHz)

Specifications

Part No.	Frequency range (GHz)	Isolation (dB)min.	Insertion loss (dB)max.	Reflection loss (dB)min.	V.S.W.R. (50Ω)max.	Handling power (W,CW)	Power absorption (W,CW)	Operating temp. range (°C)	Dimensions (mm)							Document No. MW-C-○○○
									A	B	C	D	E	F	G	
CK-□19535B231	17.7 ~ 21.2	17	0.8	17	1.33	2.0	1.0	-30 ~ +70	5	6	2.2	1.3	2.5	0.38	3.5	139
CK-□22428B231	21.0 ~ 23.8	17	0.8	17	1.33	2.0	1.0	-30 ~ +60	5	6	2.2	1.3	2.5	0.38	3	141
CK-□26530B241	25.0 ~ 28.0	17	0.8	17	1.33	2.0	1.0	-30 ~ +60	5	6.5	2.25	1.35	2	0.254	2.3	144

Remarks) □ : Rotational direction

Shapes and dimensions

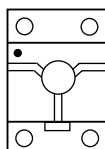


Drop-in circulators / isolators

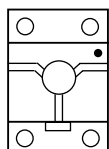
Indication of rotational direction

- Carrier type isolators

The direction of rotation is shown by a white dot on the input port.



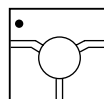
Clockwise
(R)



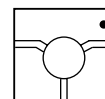
Counterclockwise
(L)

- Substrate type circulators

The direction of rotation is shown by a white dot on the input port.



Clockwise
(R)



Counterclockwise
(L)

What the part number means

- Example for carrier type

CK - □ 039 06 △ 70 1
 ① ② ③ ④ ⑤ ⑥ ⑦

- Example for carrier / high-power type

CK - □ P 039 06 △ 70 1
 ① ② ⑧ ③ ④ ⑤ ⑥ ⑦

- ① Generic code for general use products.
- ② Rotational direction (R = Clockwise, L = Counterclockwise).
- ③ Center frequency in 100MHz (rounded up at 10MHz unit).
- ④ Frequency range in 100MHz (rounded up at 10MHz unit).
- ⑤ Input and output terminal type (D=Without tab, H=With silver-plated copper tab, M=With pure-gold tab).

[Tab dimensions](Unit =mm)

Silver-plated copper tab	3 ~ 15GHz : 0.6 ^w × 0.03 ^t
		15 ~ 24GHz : 0.38 ^w × 0.03 ^t
Pure-gold tab	3 ~ 15GHz : 0.6 ^w × 0.02 ^t
		15 ~ 24GHz : 0.38 ^w × 0.02 ^t
		24 ~ 30GHz : 0.2 ^w × 0.02 ^t

- ⑥ Carrier shape
- ⑦ Development No. (1 to 9)
- ⑧ "P": Code for high-power type isolators.