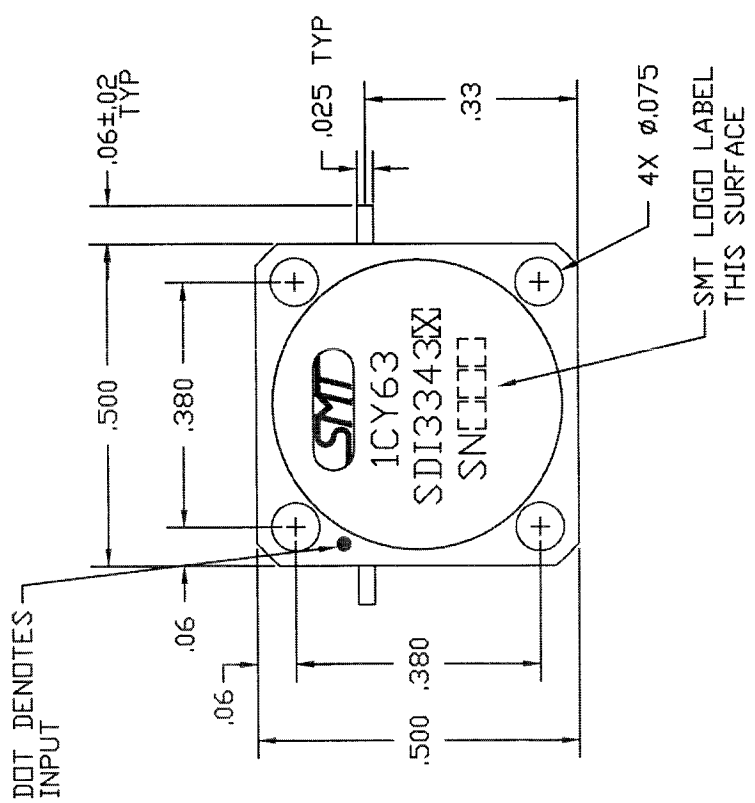
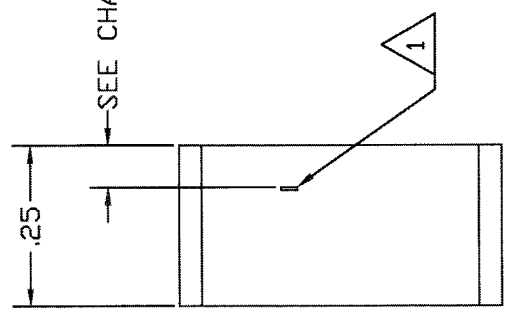


COMPUTER GENERATED DRAWING MANUAL CHANGES NOT AUTHORIZED		REVISIONS	
REV.	DESCRIPTION	DATE	RELEASED BY
NC	INITIAL RELEASE	1-30-89	L.RACE
A	REV PER ECN: 7636, 6966, 5515		

**SPECIFICATIONS**

- FREQUENCY RANGE: 3.3 TO 4.3 GHz
- VSWR: 1.30:1 MAX
- ISOLATION: 18 dB MIN
- INSERTION LOSS: 0.5 dB MAX
- TEMPERATURE:
  - OPERATING: -54° TO +100°C
  - STORAGE: -54° TO +100°C



**TAB HEIGHT CHART**

OPTION NO.	HEIGHT (NOM.)
A	.065
B	.075
C	.090
D	.100
E	.120

ITEM	QTY	FROM	FRM	PART OR IDENTIFICATION NO.	NUMERICAL OR DESCRIPTION	MATERIAL SPECIFICATION
<p>CONTRACT NO. <b>SMD SIERRA MICROWAVE TECHNOLOGY</b></p> <p>APPROVALS: <b>DATE</b></p> <p>BY: B. ALEXANDER 1-13-89</p> <p>BY: J. DARJES 1-14-89</p> <p>BY: R. RACE 1-30-89</p> <p>BY: S. HARRIS</p> <p>BY: J. L.</p>						
<p>DO NOT SCALE DRAWING</p> <p>203-0010-001 SDI3343X</p> <p>LIST OF MAT'L USED ON</p> <p>APPLICATION</p>						
<p>DO NOT SCALE DRAWING</p>					SIZE	REV
<p>DO NOT SCALE DRAWING</p>					B	A
<p>DO NOT SCALE DRAWING</p>					1CY63	205-0589-001
<p>DO NOT SCALE DRAWING</p>					FROM SCALE	SHEET OF

2. CASE: STAINLESS STEEL NICKEL PLATED.
1. TABS ARE .005±.001 THK. Be Cu, GOLD PLATED.
- NOTES: