

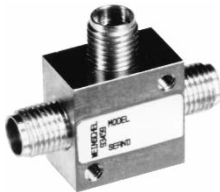
Power Splitters & Dividers



Model 1575 Broadband Resistive Power Divider Subminiature, SMK Connectors

dc to 40.0 GHz
1.0 Watt

RoHS



Features

This three resistor Power Divider is designed for applications where an RF and Microwave signal must be accurately divided or combined.

- /// **Miniature Size and Lightweight** - High power capability and high ambient temperature operation.
- /// **Close Tracking and Low Frequency Sensitivity** - Output power symmetry is excellent across the frequency range. Division is 6 dB from matched ports.

Specifications

NOMINAL IMPEDANCE: 50 Ω
FREQUENCY RANGE: dc to 40.0 GHz
INSERTION LOSS (Between input and either output):
 6 dB nominal, 8.5 dB maximum
MAXIMUM INPUT POWER: 1.0 watts CW, 1 kilowatt peak, 5 μsec pulse width
NUMBER OF PORTS: 3, interchangeable for input and output

AMPLITUDE & PHASE TRACKING (Maximum):

Frequency (GHz)	Tracking	
	Amplitude	Phase
dc - 19	<0.25 dB	2°
19 - 40	<0.50 dB	5°

MAXIMUM SWR:

Frequency (GHz)	SWR
dc - 19	1.40
19 - 40	1.70

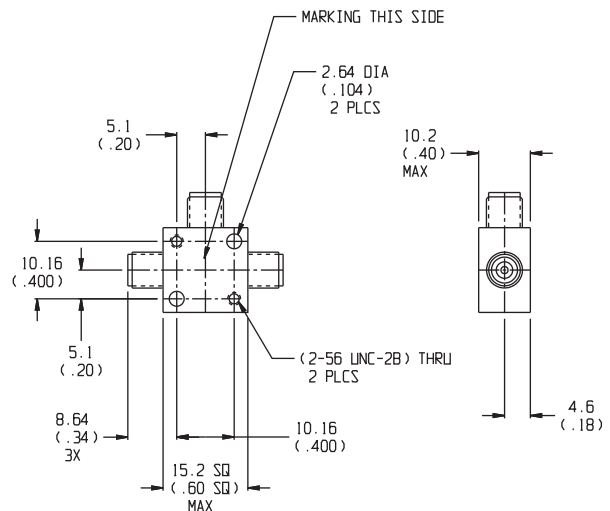
TEMPERATURE RANGE: -55°C to +85°C

TEST DATA: Insertion Loss, SWR, and Tracking measurements performed across the frequency band. Test data available at additional cost.

CONNECTORS: Female SMK (2.92mm) connectors all ports--mate nondestructively with SMA, 2.92mm and other 2.92mm and 3.5mm connectors.

WEIGHT: 25 g (0.9 oz) maximum

PHYSICAL DIMENSIONS:



NOTE: All dimensions are given in mm (inches) and are maximum, unless otherwise specified.