

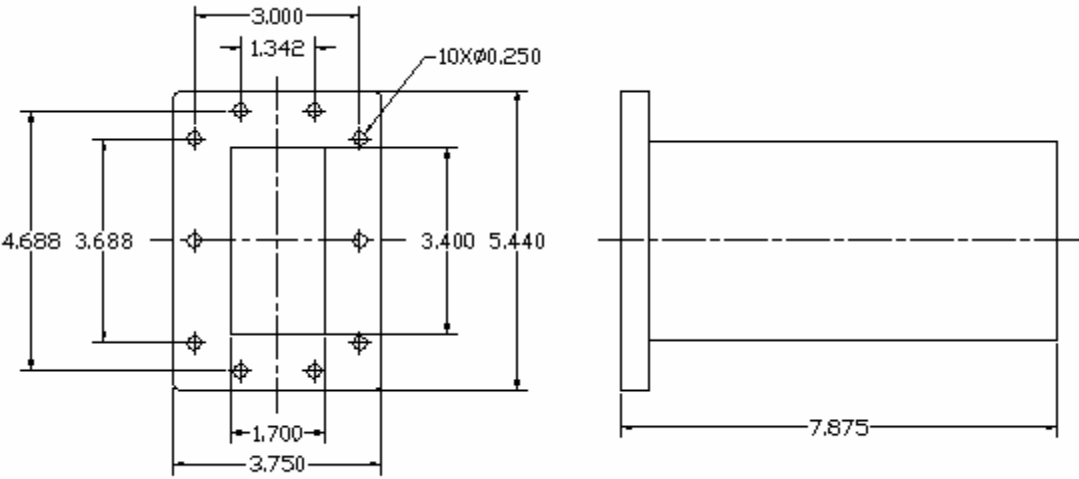
Key Features:

- Center frequency range: 2.2~3.3GHz, bandwidth up to 500MHz
- Low VSWR, high power
- Size: 7.875×5.440×3.750 inches
- WR340 Waveguide, Cover flange type
- Cooling method: Air

Electrical Specifications

Part No.	Freq Range MHz	VSWR	CW Power, Watts	Pulse Power Watts	Temp. Range, °C
TW3401-0245-20	2.20-2.70	≤ 1.1:1	≥ 100	30 kWatts	-40 ~ +70
TW3401-0275-18	2.50-3.00	≤ 1.1:1	≥ 100	30 kWatts	-40 ~ +70
TW4301-0305-16	2.80-3.30	≤ 1.1:1	≥ 100	30 kWatts	-40 ~ +70

Mechanical Structure:



Note: All units in inches

Ordering Information:

