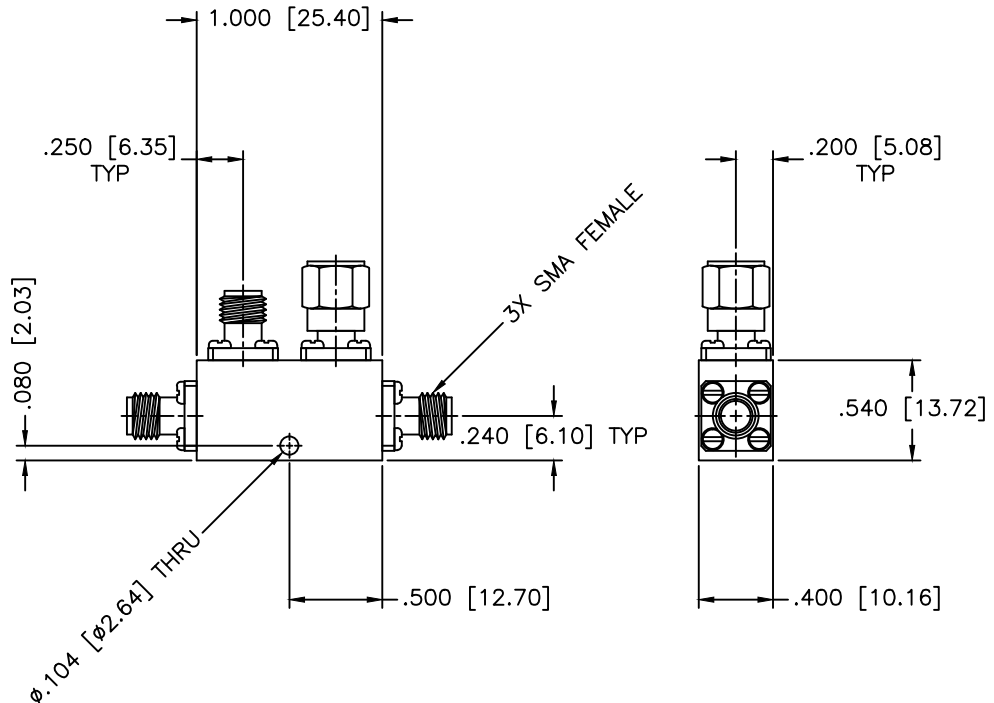


REVISIONS				
ZONE	REV	DESCRIPTION	DATE	APPROVED



**SPECIFICATIONS**

Frequency Range: 18.5–19.5 GHz  
 Coupling: 10±1.25dB  
 Frequency Sensitivity: ±.80dB  
 Insertion Loss: 1.60dB Max.  
 Directivity: 10dB Min.  
 VSWR: 1.70:1 Max.  
 Power Incident, Reflected: 50W, 5W, 3kW Peak

MATERIAL:		MICROWAVE COMMUNICATIONS LABORATORIES INC. 7255 30TH AVE. N. SAINT PETERSBURG, FL 33710 TEL: (727) 344-6254 FAX: (727) 381-6116 http://WWW.MCLI.COM	SCALE:	N/A
			SHEET:	N/A
UNLESS OTHERWISE SPECIFIED: TOLERANCES IN (INCHES) OR [mm] (MILLIMETERS) FRACTIONS: ± 1/64 DECIMALS: ±.01 ±.005 ANGLE: ±1/2°		DRAWING TITLE:		
		DIRECTIONAL COUPLER		
DRAWN:		PART NO.		
Paiboon Luekhamhan		C26-10		
DATE:	10-01-1999	CAGE CODE:	SIZE:	REV:
APPROVED:	T. Nguyen	OD2L5	A	N/A
DATE:	10-01-1999	DO NOT SCALE THE DRAWING		DWG NO.
				81398



THIRD ANGLE PROJECTION