

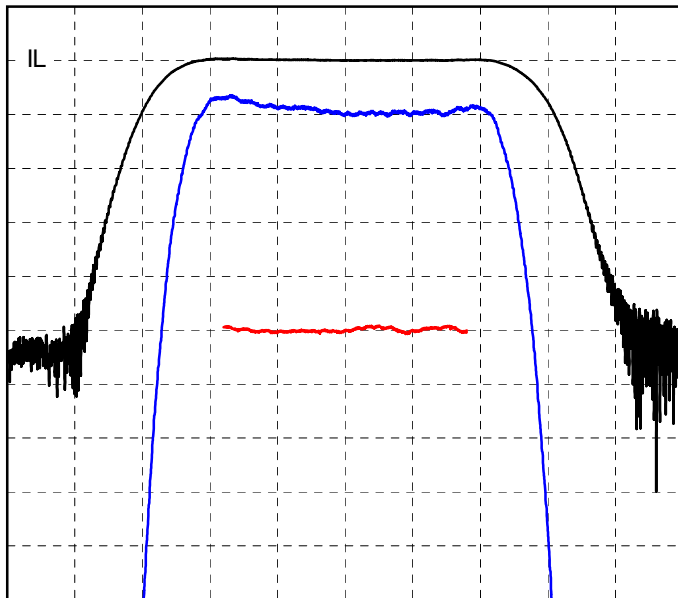
Specifications

Parameter	Unit	Min	Typical	Max
Center Frequency (F0)	MHz		720	
Bandwidth (B)	MHz		160	
-3 dB Bandwidth (B3)	MHz	209	212	
-40 db Bandwidth (B40)	MHz		301.7	307
Delay (T0)	μsec	0.86	0.866	0.87
Insertion Loss (IL)	dB		30.8	32
Amplitude Ripple	dB p-p		0.3	0.5
Phase Ripple	deg p-p		2	3.5
Rejection	dB	44	47	
Spurious for t-T0 >.9T0	dB		-50	-46
Substrate Material		128YX-LN		

- Notes:
- Center Frequency (F0) and Bandwidth (B) are defined, not measured.
 - Insertion Loss is the minimum loss for $|f-F0| < .5B$
 - Ripple spec applies to the $|f-F0| < .4B$, and is doubled for $.4B < |f-F0| < .5B$
 - Rejection spec applies to $(B40 \text{ Spec} - B/2) < |f-F0| < F0/2$
 - Specifications are at 22C only. Unit will operate undamaged from -54C to 125C with shifts $dF0 = -x \cdot F0$, $dT0 = x \cdot T0$, where $x = 75E-6 \cdot (\text{temperature} - 22C)$

Typical Performance

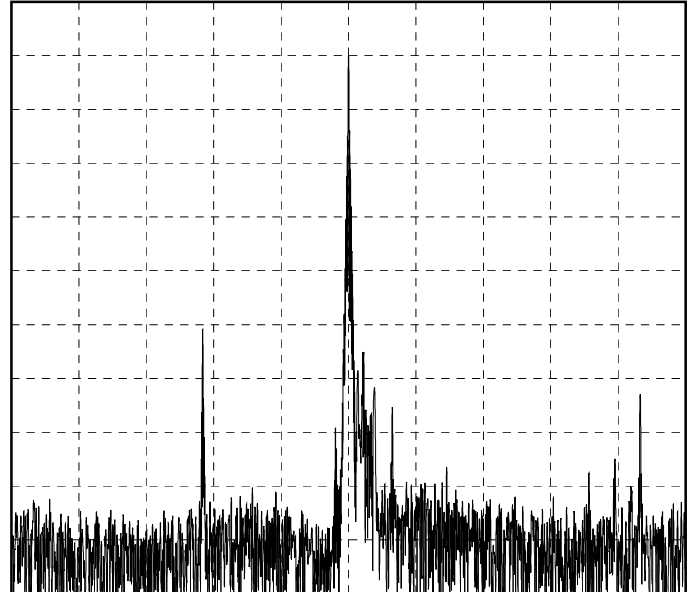
Frequency Response
(Best Fit Linear Phase Removed)



10 dB/div, 1 dB/div, 10 deg/div, 40 MHz/div

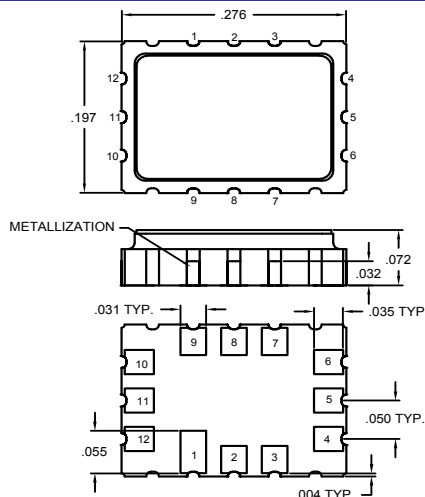
Impulse Response

FFT(Frequency Response * Cos(0.5*PI*MIN(1,MAX(0,|f-F0|*2.0/200-1.0)))^2)

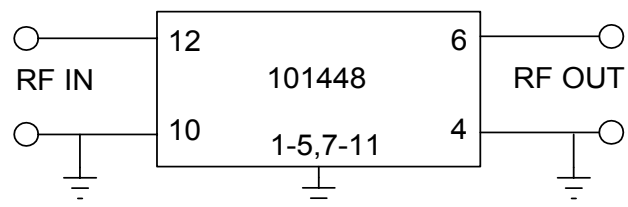


10 dB/div, 0.4 us/div

Package Outline



Matching



Matched S-parameters available at www.phonon.com