

## TRANSFER

### MTRAN Failsafe



The M version Transfer (MTRAN) is a four port switch with two independent pairs of RF paths. These pairs are actuated simultaneously. This actuation is similar to that of a double-pole-double-throw switch. Failsafe and latching switching modes are available. Other options include position indicator contacts and choices of connectors. See Model Numbering System for other options.

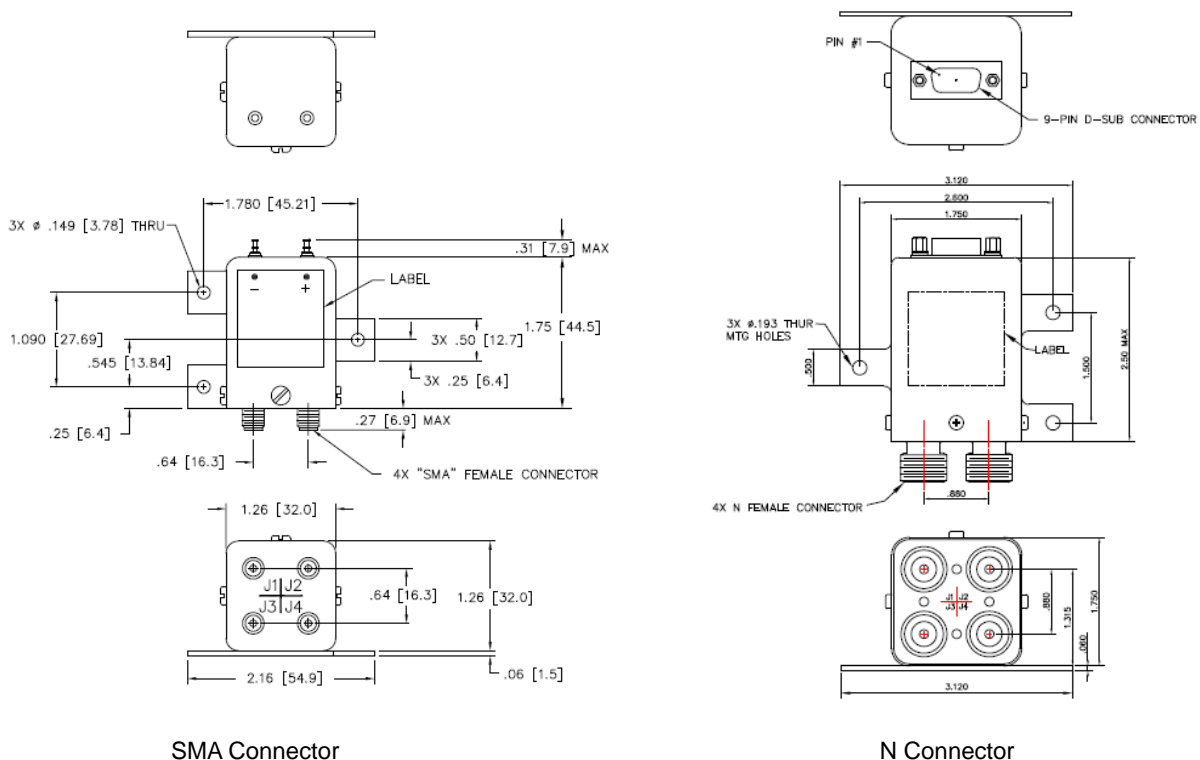
M series TRAN switches with higher temperature range is available for environments where additional shock, vibration, and humidity tolerance is required. Please visit EPX website or contact factory for details.

## Specifications

Actuator:	Failsafe			
Actuator Voltage:	12±1 VDC	15±1 VDC	24±2 VDC	28±2 VDC
Actuator Current *:	390mA	320mA	220mA	200mA
Switching Time:	15-30ms (max)			
MTBF:	6.8 Million Hours			

\* Note: Actuator Current stated is for TRAN, SMA, Failsafe without Indicator/TTL models only.

## Outline



SMA Connector

N Connector

Specifications subject to change without notice

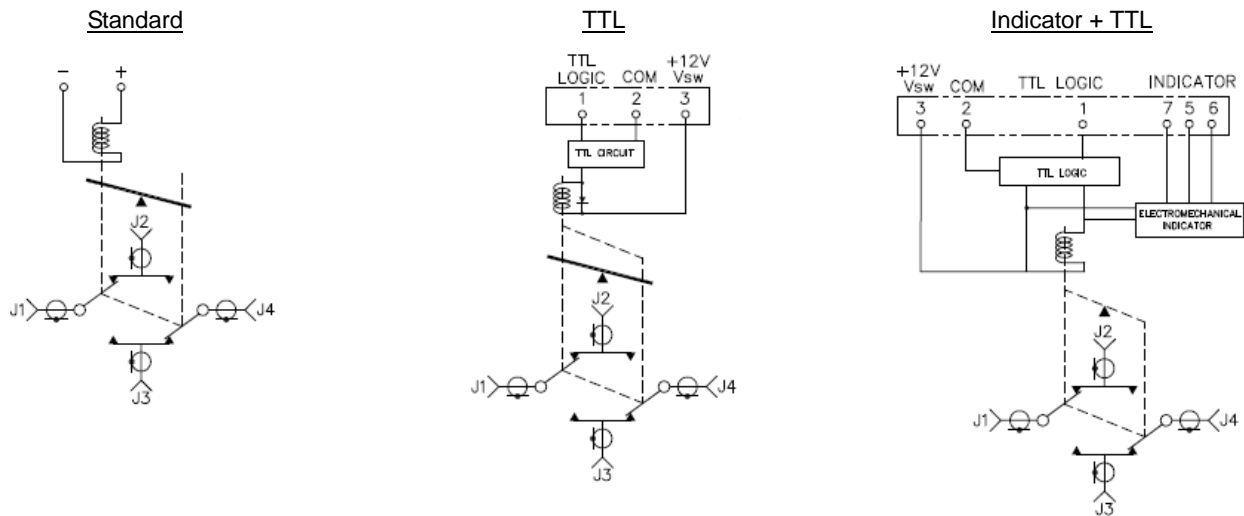
3048 SCOTT BOULEVARD, SANTA CLARA CA95054

TEL.NO.: 1-408-727 7127 • FAX NO.: 1-408-727 0827 • www.epxmrowave.com

Jan 2010

## Schematic

### MTRAN Failsafe Actuator



## Model Numbering System

Example: **MTRAN-0A-18A-D-S9**

**MTRAN - 0 A - 18 A - D - S9**

