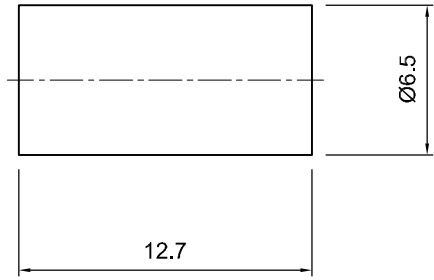
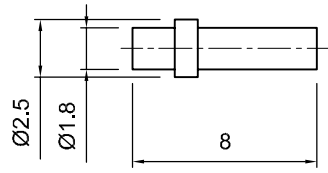
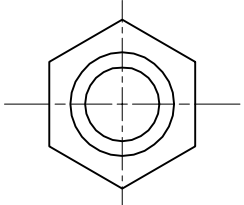
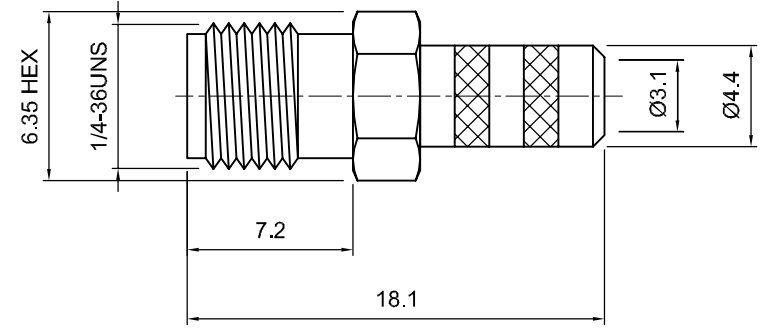


Tolerances
 1-20=+/-0.2
 20-30=+/-0.3
 30-40=+/-0.4
 40-50=+/-0.5
 50-100=+/-0.75
 100-300=+/-1.5
 Angles=+/-1
Dimensions are in Millimeters

Revisions		Approved	Date
Description/Approved/Date		M.H.	04/05/01
1. Crimp stem dia. / M.H. / 02-25-02		Checked	Date
		M.H.	04/03/01
		Drawn	Date
		K.R.E.	04/03/01
NOTES (plating thickness in micro-inches):			
1. Per QQ-B-626	5. Per MIL-P-19468	9. Nickel pl. 100 min. over copper strike	
2. Per QQ-S-764	6. Per ZZ-R-765	10. Per QQ-P-35	
3. Per QQ-C-530	7. Per WW-T-799	11. Gold pl. 30 min. over nickel pl. 50 min. over copper strike	
4. Per QQ-B-750	8. Gold pl. 5 min. over nickel pl. 50 min. over copper strike		



ITEM	MATERIAL	FINISH
Connector Body	Brass, Note 1	Gold, Note 8
Center Contact: Female	Beryllium Copper, Note 3	Gold, Note 11
Insulation	Teflon, Note 5	None
Ferrule	Annealed Copper, Note 7	Same as body
Gasket	--	--
Hex Nut	--	--
Lock Washer	--	--

Lighthouse Technologies, Inc.

5640 Kearny Mesa Road, Suite N
 San Diego, California 92111

Part Number:
LTI-SASF11GT-58

Description		
SMA crimp jack for RG-58 cable. Gold plated brass		
body, teflon dielectric.		
Scale	Drawing No.	File Name
3:1	SMA/SASF11-58	SASF11-58