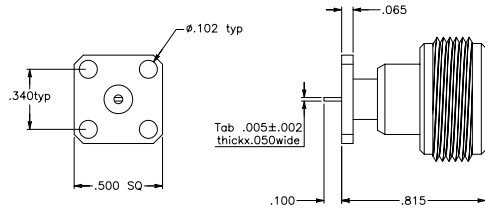


PANEL JACK RECEPTACLE - TAB/SLOTTED CONTACTS



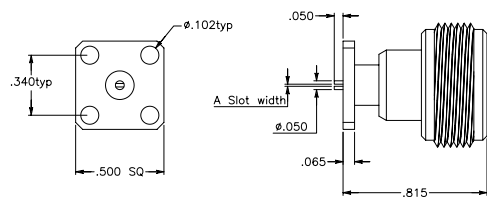
*Add "NC" as a prefix to P/N to order w/out captivation.

(1/2" Square Flange N Tab)



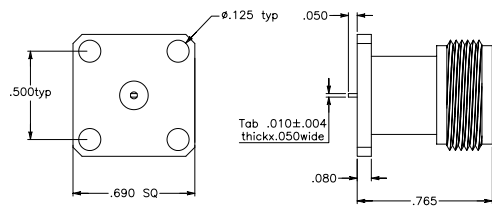
PART #
N-3000-1001

(1.2" Square Flange N Slotted)



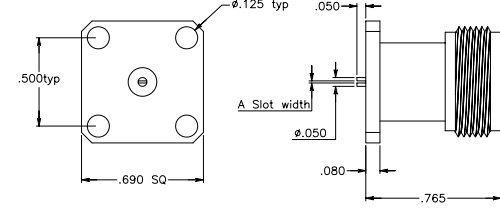
PART #
N-3000-1004

(11/16" Square Flange N Tab)



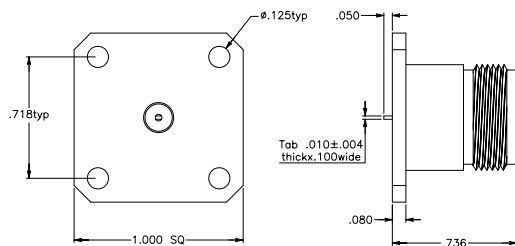
PART #
N-3000-1002

(11/16" Square Flange N Slotted)



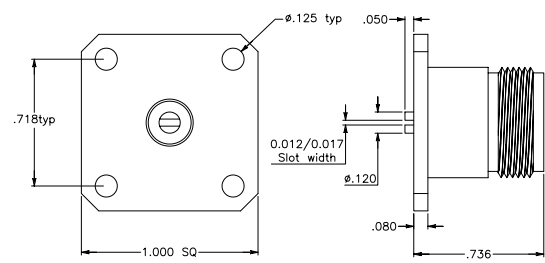
PART #
N-3000-1005

(1" Square Flange N Tab)



PART #
N-3000-1003

(1" Square Flange N Slotted)



PART #
N-3000-1006

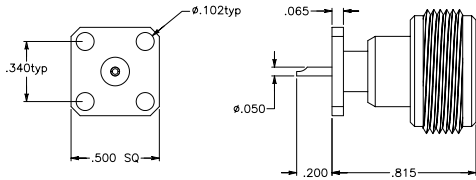
PANEL JACK RECEPTACLE

*Add "NC" as a prefix to P/N to order w/out captivation.



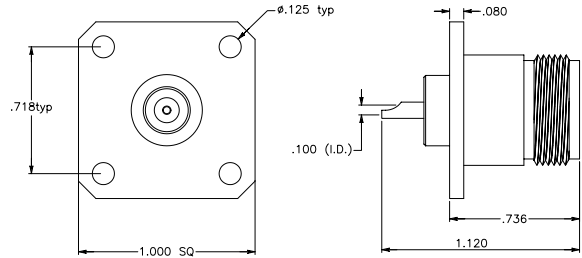
Z

(1/2" Square Flange N)



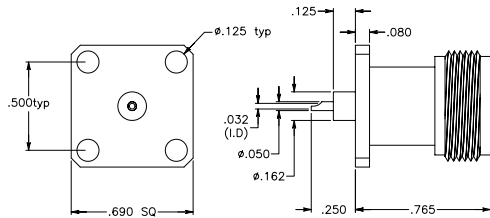
PART #
N-3000-1007

(1" Square Flange N)



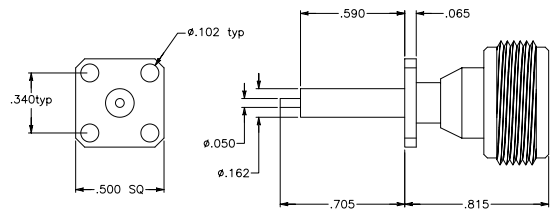
PART #
N-3000-1010

(11/16" Square Flange N)



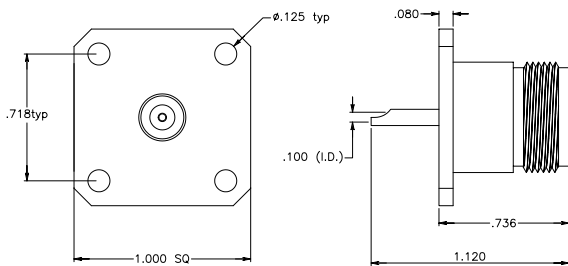
PART #
N-3000-1008

(1/2" Square Flange N)



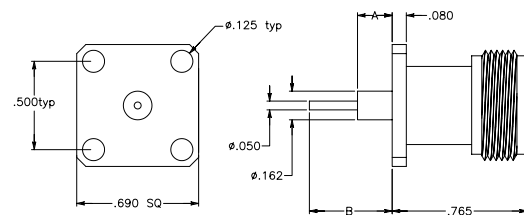
PART #
N-3000-1011

(1" Square Flange N)



PART #
N-3000-1009

(11/16" Square Flange N)

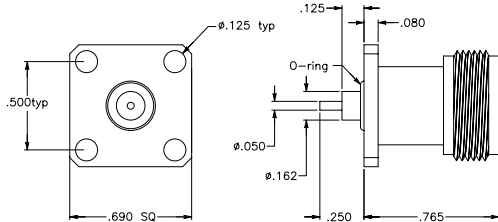


PART #	Dim A	Dim B
N-30001012	.125	.25
N-30001012-1	.590	.705

*Add "NC" as a prefix to P/N to order w/out captivation.

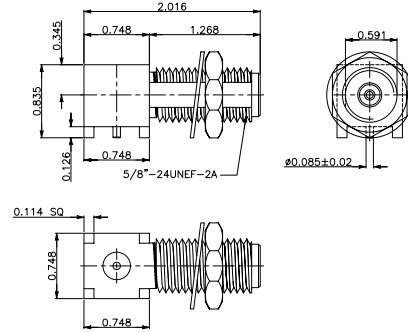
Z

(11/16" Square Flange N)



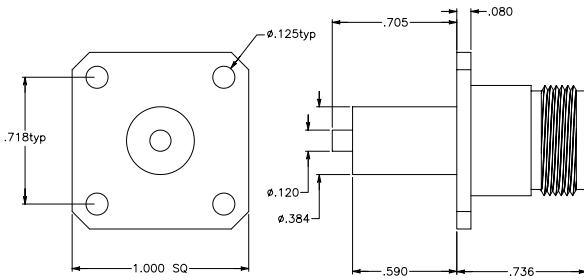
PART #
N-3000-1013

(Connector N Slotted) Right Angle Jack



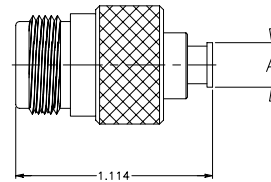
PART #
N-3000-1016

(1" Square Flange N, Extended Dielectric .590)



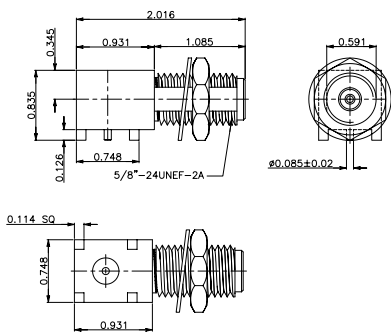
PART #
N-3000-1014

(Straight Jack N)



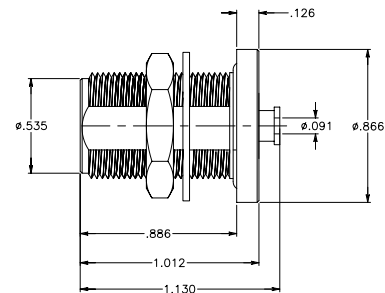
PART #	Dim A
N-3000-1017	.089
N-3000-1017-1	.141

(Connector N) Right Angle Jack



PART #
N-3000-1015

(Bulkhead Jack N 0.085)



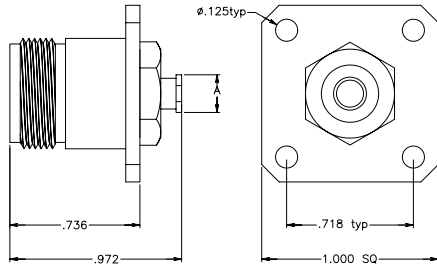
PART #
N-3000-1018

N SERIES JACK

*Add "NC" as a prefix to P/N to order w/out captivation.

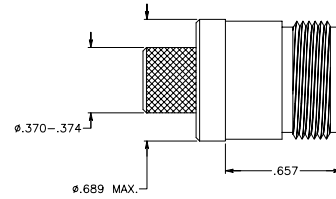


(Panel Jack 4 Holes N)



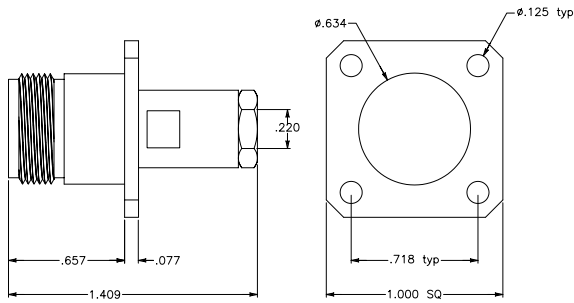
PART #	Dim A
N-3000-1019	.089
N-3000-1019-1	.144

(N Straight Jack Crimp Type LMR 400)



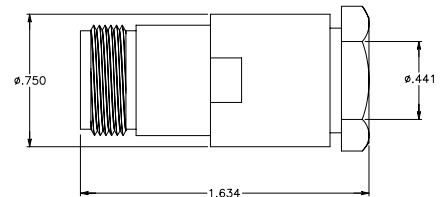
PART #
N-3000-1022

(Panel Jacks Clamp Type N)



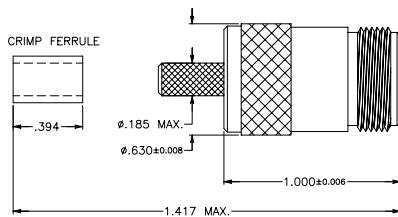
PART #
N-3000-1020

(N Straight Jack Crimp Clamp Type) RG 165, 213, 214, 215, 225



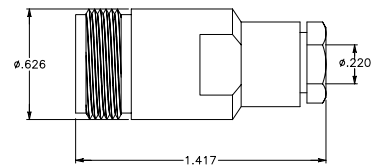
PART #
N-3000-1023

(N Straight Jack Crimp Type LMR 200)



PART #
N-3000-1021

(N Straight Jack Clamp Type LMR 200)



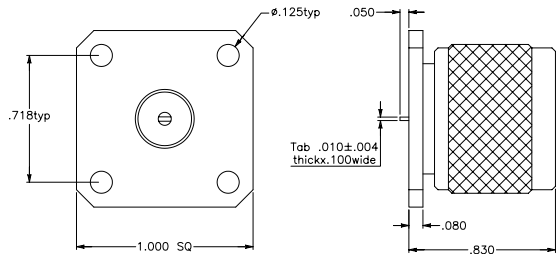
PART #
N-3000-1024

N SERIES PLUG



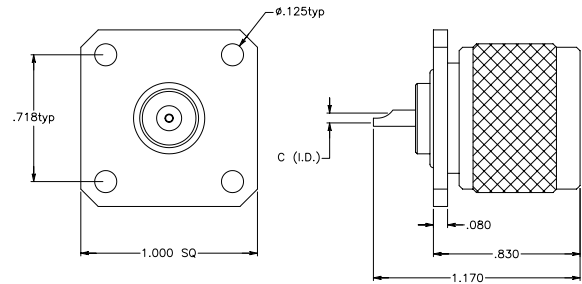
*Add "NC" as a prefix to P/N to order w/out captivation.

(1" Square Flange N Tab)



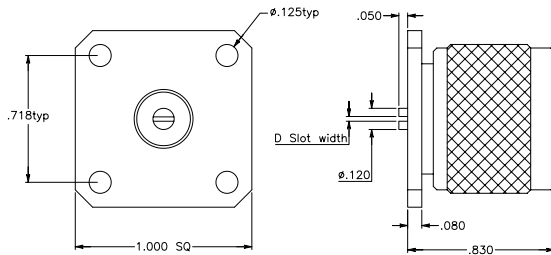
PART #
N-3000-2001

(1" Square Flange N)



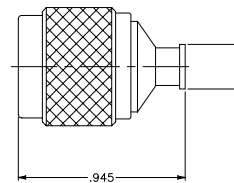
PART #
N-3000-2004

(1" Square Flange N Slotted)



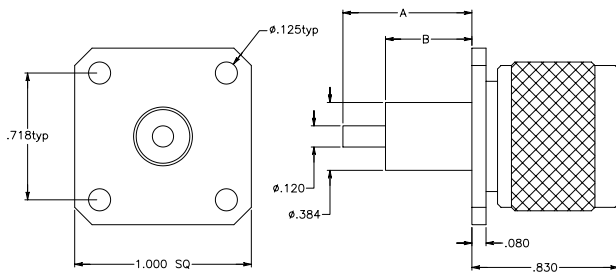
PART #	D width
N-3000-2002	.012/.017

(Straight Plug)



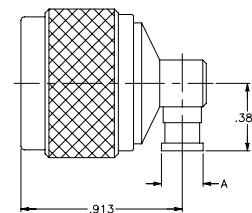
PART #	Dim A
N-3000-2005	.089
N-3000-2005-1	.141

(1" Square Flange N, Extended Dielectric)



PART #	Dim A	Dim B
N-3000-2003	1.10	.590
N-3000-2003-1	.488	.330

(Right Angle Plug)



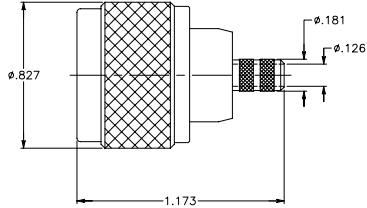
PART #	Dim A
N-3000-2006	.089
N-3000-2006-1	.141

N SERIES PLUG



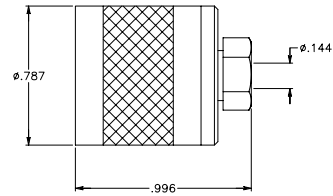
*Add "NC" as a prefix to P/N to order w/out captivation.

**(N Crimp Plug)
RG 58/4, 141/4**



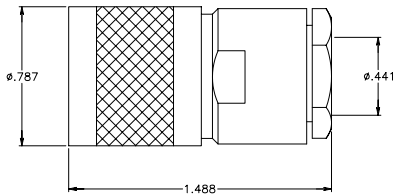
PART #
N-3000-2007

(Straight Plug for Semi Rigid Cable N)



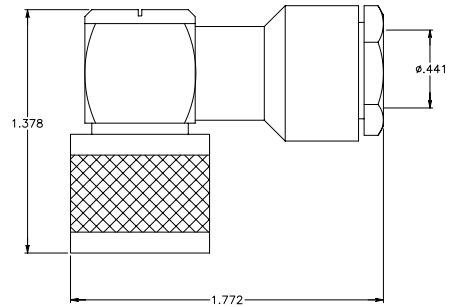
PART #
N-3000-2010

**(N Straight Plug Clamp Type LMR 400)
RG 165, 213, 214, 215**



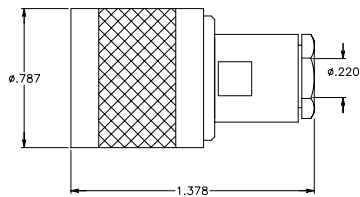
PART #
N-3000-2008

**(Right Angle Plug Clamp Type)
RG 165, 213, 214, 215, 225**



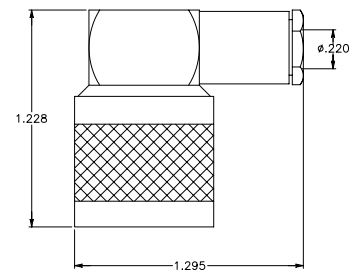
PART #
N-3000-2011

**(Straight Plug Clamp Type N LMR 200)
RG 55, 141, 223, 303**



PART #
N-3000-2009

**(N Right Angle Plug Clamp Type)
RG 55, 58, 141, 142, 223, 303, 400**



PART #
N-3000-2012