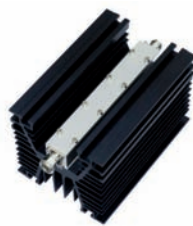
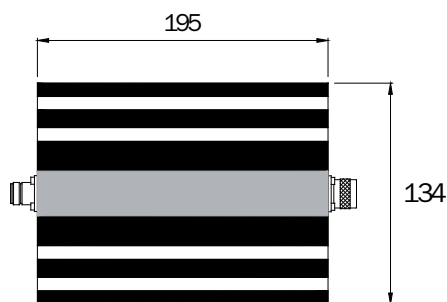
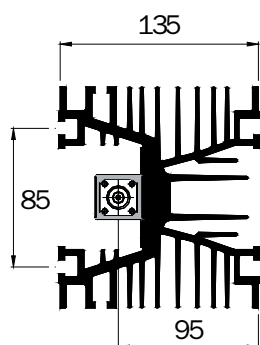
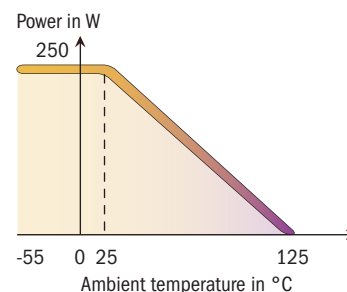


Standards
NF C 96-315
MIL-DTL-3933



Impedance	50 Ω ± 5%
Frequency	DC - 1 GHz
Max VSWR	≤ 1.30 at 1 GHz
Temperature range	-55 to +125°C
Average power @ 25°C	250 W
Weight	3.7 kg



Dimensions in mm

Attenuateur (dB)	P/N (N m/f)	Accuracy ±Δα (dB)
3	16-6569	0.6
6	16-6513	0.6
10	16-6510	1
20	16-6545	1
30	16-0286	1.2
40	16-6534	1.5

Model available with 7-16 connector
Others attenuations on request

