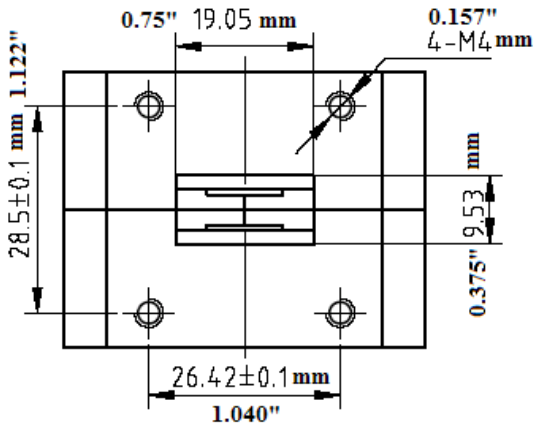
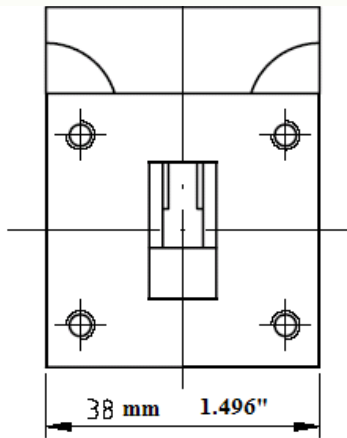
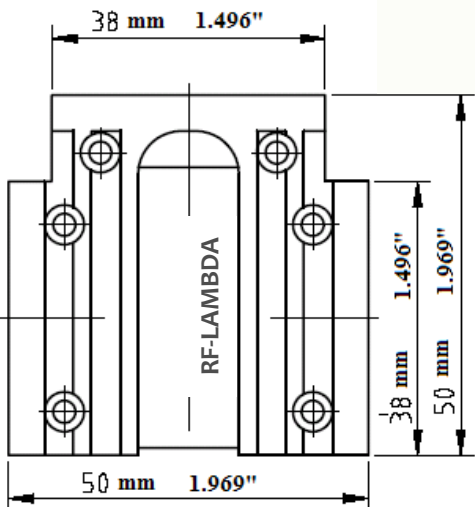
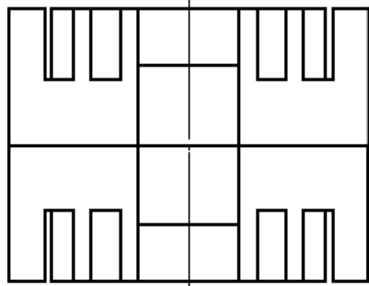



WAVEGUIDE HIGH POWER CIRCULATOR--- RFWC75C



1.0 Mechanical Specifications	
1.1	Waveguide type Rectangular Waveguide WR75
1.2	Flange type CPRG, CPRF, COVER, CHOKE available
1.3	Flange Holes Through
1.4	Basis-material Aluminum, Brass, Alloyed Cuprum, Stainless
1.5	External Body Finish Body painted with gray/black epoxy enamel

2.0 Environment specifications	
2.1	Operation Temp. -40°C~+85°C
2.2	Storage Temp. -50°C~+125°C
2.3	Altitude 45000 ft
2.4	Vibration 10g rms (15 degree 2KHz)
2.5	Humidity 100% RH at 35c, 95%RH at 40 deg c
2.6	Shock 20G for 11msc

3.0 Electrical Specifications	
3.1	Frequency Range 10.0 ~ 15.0GHz
3.2	Bandwidth 2GHz (11.0~13.0GHz As shown)
3.3	Average Power 200W (CW)
3.4	Peak Power 5KW
3.5	Insertion Loss 0.25dB
3.6	Isolation 20dB
3.7	Max. VSWR 1.20:1

PAGE 1 OF 1	DATE Nov 5 th 2004
<small>PROPRIETARY INFORMATION THE INFORMATION CONTAINED IN THIS DOCUMENT IS THE PROPERTY OF RF-LAMBDA EXCEPT AS SPECIFICALLY AUTHORIZED IN WRITING BY RF-LAMBDA. THE HOLDER OF THIS DOCUMENT SHALL KEEP ALL INFORMATION CONTAINED HEREIN CONFIDENTIAL AND SHALL PROTECT SAME IN THE WHOLE OR IN PART FROM DISCLOSURE AND DISSEMINATION OF ALL THIRD PARTIES AND SHALL USE SAME FOR OPERATING AND MAINTENANCE PURPOSES ONLY</small>	DESIGN RFPC
	RF-LAMBDA RFPC
	CAD MODEL REVISION 19
	ASSEMBLY REVISION V552
 RFWC75C WAVEGUIDE CIRCULATOR	ASSEMBLY NAME RFLVR17
	DRAWING NUMBER D05-1
	www.rflambda.com
RF-LAMBDA	SIZE LT
	SHEETS 1 OF 1