

- 1.0 PERFORMANCE:  
 1.1 FREQUENCY RANGE DC-18 GHz  
 1.2 VSWR < 1.15  
 1.3 SYSTEM IMPEDANCE 50 OHMS  
 1.4 DWV: 1000 Vrms @ 60 Hz (SEA LEVEL)  
 1.5 VOLTAGE RATING: 335 Vrms (SEA LEVEL)  
 1.6 TEMP RANGE: -65 / +165 °C

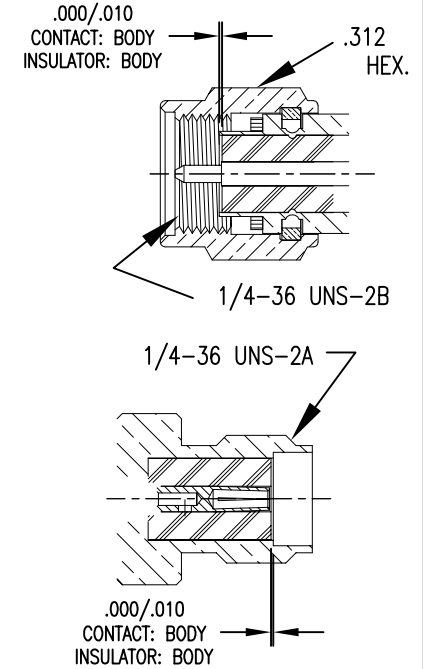
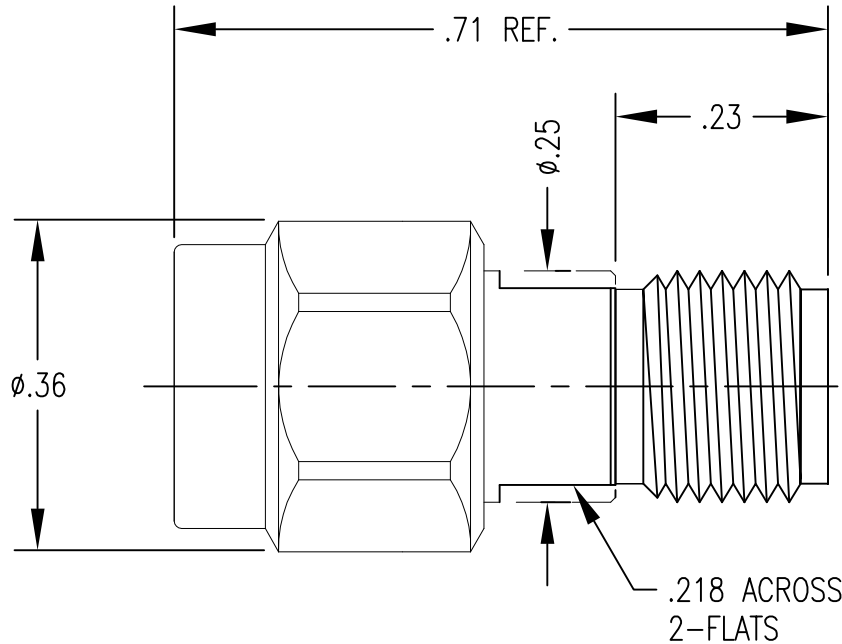
- 2.0 MATERIALS  
 2.1 CONTACT: BERYLLIUM COPPER  
 2.3 LOCKING RING: BERYLLIUM COPPER  
 2.4 OTHER METAL PARTS: BRASS  
 2.5 INSULATOR: TEFLON  
 2.6 GASKET: SILICONE RUBBER OR VITON

- 4.0 MECHANICAL  
 4.1 INTERFACES PER MIL-STD-348  
 4.2 COUPLING PROOF TORQUE 15 INCH\*LBS MIN  
 4.3 COUPLING NUT RETENTION 60 LBS AXIAL  
 4.4 CONTACT RETENTION: 6 LBS MIN.  
 4.5 DURABILITY: 100 CYCLES

- 3.0 FINISHES  
 3.1 CONTACT: SEE TABLE  
 3.2 BODY & COUPLING NUT: SEE TABLE

DWG NO.	OL-1210-03-1	REV.	B
PLATING VARIATIONS			
PART NUMBER	BODY	CONTACT	
1210-03-NH	NICKEL	GOLD/Ni	
1210-03-FH	Au FUSION	GOLD/Ni	

PLATING PER SAN-TRON SPEC. 7.3.1-8



DO NOT SCALE DRAWING

THIS DRAWING CONTAINS CONFIDENTIAL INFORMATION PROPRIETARY TO SAN-TRON INC. IT MUST NOT BE REPRODUCED OR DISCLOSED TO OTHERS OR USED IN ANY OTHER WAY, IN WHOLE OR PART EXCEPT AS AUTHORIZED IN WRITING BY SAN-TRON INCORPORATED.

UNLESS OTHERWISE SPECIFIED:  
 ALL DIMENSIONS ARE IN INCHES.  
 ALL DIMENSIONS ARE AFTER PLATING.  
 .XXX = ±.005 ALL MACHINED SURFACES  $\sqrt{63}$  MAX.  
 .XX = ±.01 ANG. ±1/2° FRACTIONAL = ±1/64  
 ◎ .004 MAX. TIR.      ⊥ AXIS .001

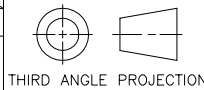


**SAN-TRON, INC.**

4 NEWBURYPORT TPK. IPSWICH MA USA 01938  
 TEL: 978-356-1585 FAX: 978-356-1573  
 WWW.santron.com E MAIL: santron@santron.com

TITLE		ADAPTER, STRAIGHT SMA (F) TO SMA (M)	
MATERIAL:		FINISH:	
SEE NOTES		SEE NOTES	
CAGE CODE: 50896	DWG NO.	REV.	
SCALE X:X	OL-1210-03-1	B	

Rev.	Revisions	Disp.	Date	Dwn.	Appd.
B	ADDED .218 FLATS	FIFO	11/5/09	JTH	FSH
A	ORIGINAL	NEW	11/1/04		
Ref.:		REMOVE ALL BURRS AND SHARP EDGES .005 MAX.		INTERPRET PER ASME Y14.5M-1994	



DWN	LAP	11/1/04
CHKD	SJS	11/2/04
APPR	FSH	11/1/04