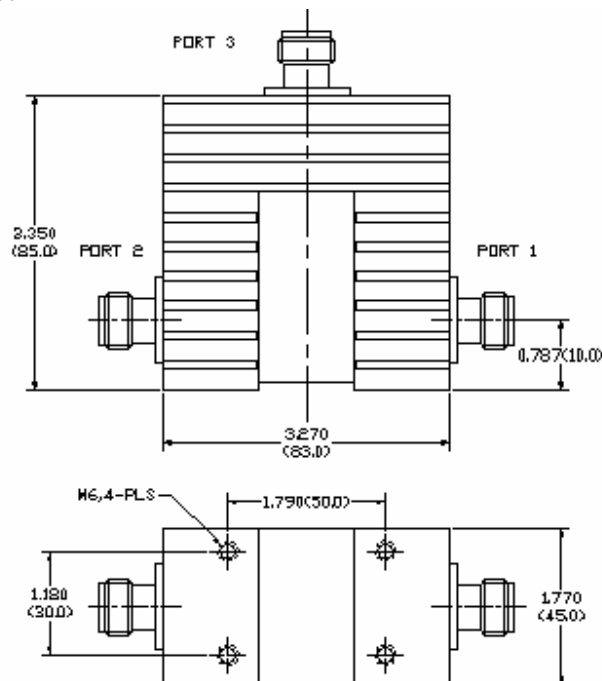


Key Features:

- Center Frequency range: 2.80~4.10GHz, bandwidth up to 10%
- N-Type connectorized configuration
- Power handling +200Watts CW
- Operating temperature -40~+55°C
- Customer specify center frequency and bandwidth

Electrical Specifications

Part No.	Freq Range GHz	Insertion Loss, dB	Reverse Isolation, dB	VSWR	Forward Power, Watts	Temp. Range, °C
F2616-0290-07	2.80~3.00	0.4 Max	20	1.2	200	-40 ~ +55
F2616-0325-09	3.10~3.40	0.3 Max	25	1.2	200	-40 ~ +55
F2616-0335-15	3.10~3.60	0.5 Max	20	1.2	200	-40 ~ +55
F2616-0350-11	3.30~3.70	0.5 Max	20	1.2	200	-40 ~ +55
F2616-0355-08	3.40~3.70	0.4 Max	20	1.2	200	-40 ~ +55
F2616-0380-10	3.61~3.90	0.4 Max	20	1.2	200	-40 ~ +55
F2616-0380-11	3.60~4.00	0.4 Max	20	1.2	200	-40 ~ +55
F2616-0390-01	3.88~3.92	0.3 Max	20	1.2	200	-40 ~ +55
F2616-0390-10	3.70~4.10	0.4 Max	20	1.2	200	-40 ~ +55

Mechanical Structure:

Note: All units in inches (mm).

Ordering Information:

Part Number:

F2616-XXXX-XX
 ↓ ↓
 Bandwidth, XX%,
 ↓
 Frequency XX.XX GHz,

Connector type can be specified in the part description, i.e., SMA female or Type N female.