



ANATECH ELECTRONICS INC
RF & Microwave Filters & Products

913 MHz Cavity Filter

Part Number: AB913B488



Electrical specifications

Center Frequency: 913 MHz
Bandwidth: 20 MHz
Input / Output Impedance: 50 Ohms
Passband: 903-923 MHz
Passband Insertion Loss: 1.6dB MAX
Passband Ripple: 1dB MAX
Passband Return Loss: 15dB (18dB typical)
Rejection: 40dB@ 895 MHz
Rejection 2: 40dB@ 931 MHz
Power Handling: 30 Watts

Mechanical

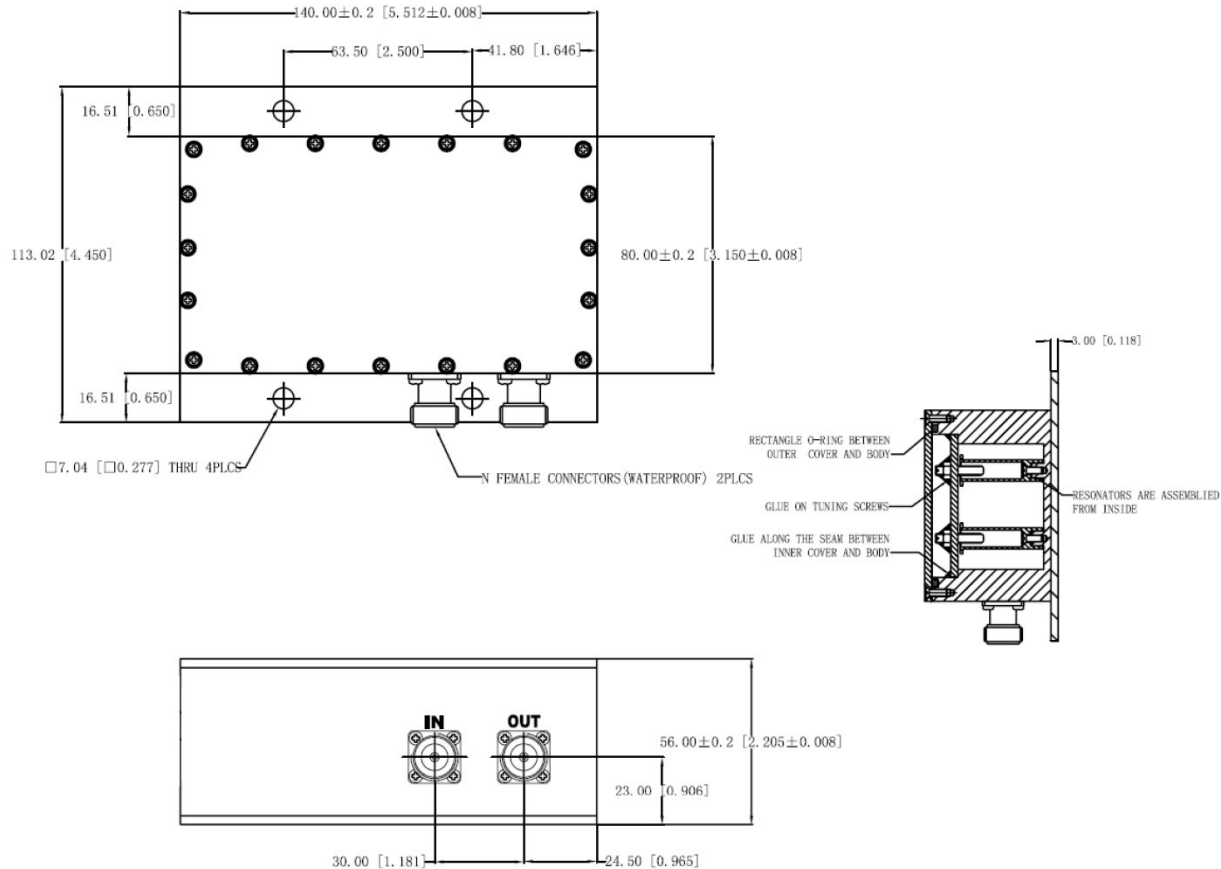
Mounting Method: Threaded Mounting Holes
Connector Type: N-Type Female
Dimensions: 140 x 113 x 80 mm.

Environmental

Operating Temperature: -40 to +85 Deg C
Storage Temperature: -55 to +95 deg.C
Shock: 20 G. 11ms
Vibration: 20 G. 5 to 200 MHz



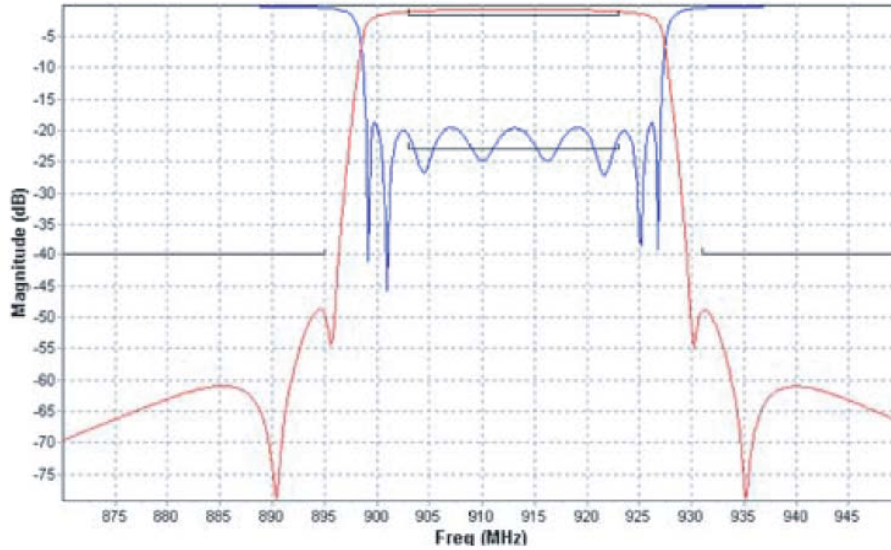
Outline Drawing:





Response Plot:

Rejection



Insertion Loss

