

- 1.0 PERFORMANCE:
 1.1 FREQUENCY RANGE DC-18 GHz
 1.2 VSWR < 1.15
 1.3 SYSTEM IMPEDANCE 50 OHMS
 1.4 DWV: 1000 Vrms @ 60 Hz (SEA LEVEL)
 1.5 VOLTAGE RATING: 335 Vrms (SEA LEVEL)
 1.6 TEMP RANGE: -65 / +165 °C

- 2.0 MATERIALS
 2.1 CONTACT: BERYLLIUM COPPER
 2.2 OTHER METAL PARTS: BRASS
 2.3 INSULATOR: TEFLON

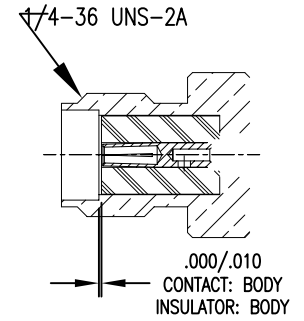
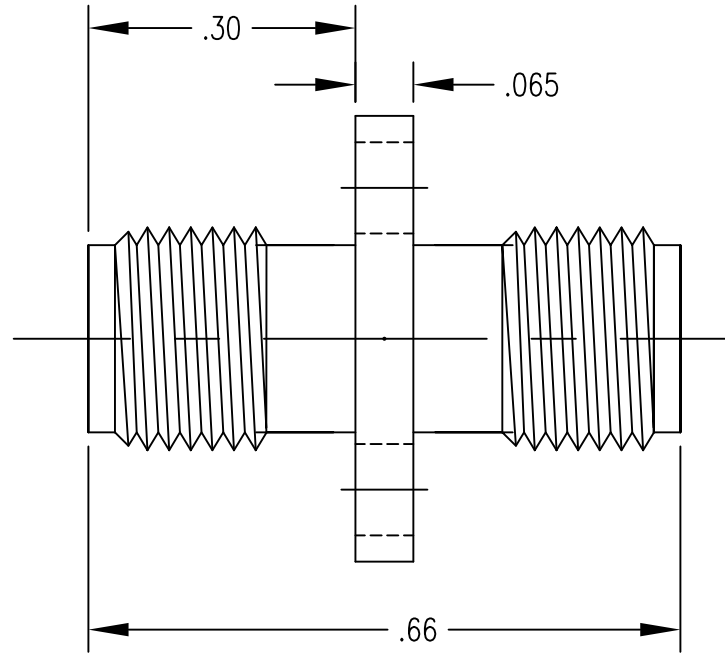
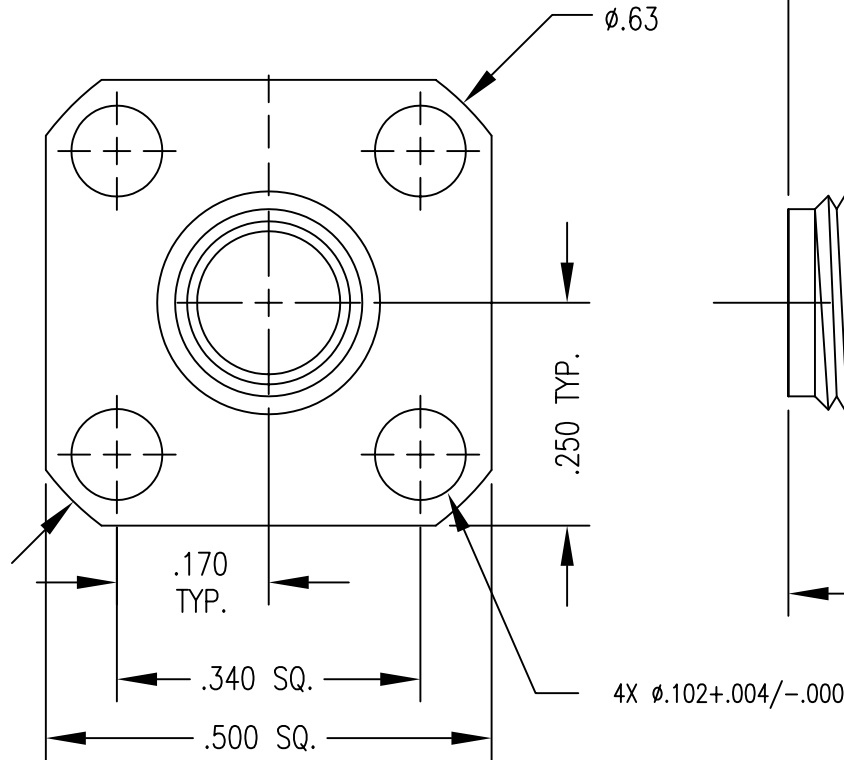
- 3.0 FINISHES
 3.1 CONTACT: SEE TABLE
 3.2 BODY: SEE TABLE

- 4.0 MECHANICAL
 4.1 INTERFACES PER MIL-STD-348
 4.2 CONTACT RETENTION: 6 LBS MIN.
 4.3 DURABILITY: 100 CYCLES

DWG NO. OL-1210-06-1 REV. A

PLATING VARIATIONS		
PART NUMBER	BODY	CONTACT
1210-06-NH	NICKEL	GOLD/Ni
1210-06-FH	Au FUSION	GOLD/Ni

PLATING PER SAN-TRON SPEC. 7.3.1-8



DO NOT SCALE DRAWING

Rev.	A	ORIGINAL	NEW	11/1/04		
		Revisions	Disp.	Date	Dwn.	Appd.
		Ref.:	REMOVE ALL BURRS AND SHARP EDGES .005 MAX.	INTERPRET PER ASME Y14.5M-1994		

THIS DRAWING CONTAINS CONFIDENTIAL INFORMATION PROPRIETARY TO SAN-TRON INC. IT MUST NOT BE REPRODUCED OR DISCLOSED TO OTHERS OR USED IN ANY OTHER WAY, IN WHOLE OR PART EXCEPT AS AUTHORIZED IN WRITING BY SAN-TRON INCORPORATED.

UNLESS OTHERWISE SPECIFIED:
 ALL DIMENSIONS ARE IN INCHES.
 ALL DIMENSIONS ARE AFTER PLATING.
 .XXX = ±.005 ALL MACHINED SURFACES ⁶³/ MAX.
 .XX = ±.01 ANG. ±1/2° FRACTIONAL = ±1/64

Ⓞ .004 MAX. TIR. ⊥ AXIS .001

DWN LAP 11/1/04
 CHKD SJS 11/2/04
 APPR FSH 11/1/04

THIRD ANGLE PROJECTION

SAN-TRON, INC.
 4 NEWBURYPORT TPK. IPSWICH MA USA 01938
 TEL: 978 - 356 -1585 FAX: 978 - 356 -1573
 WWW. santron.com E MAIL: santron@santron.com

San-Tron

TITLE ADAPTER, STRAIGHT, PANEL MOUNT, SMA (F) TO SMA (F)

MATERIAL: SEE NOTES FINISH: SEE NOTES

CAGE CODE: 50896 DWG NO. OL-1210-06-1 REV. A

SCALE X:X