



50 Ohm SMA SPST PIN Diode Switch Operating From 8 GHz to 12 GHz Up To +30 dBm

TECHNICAL DATA SHEET

PE7109

50 Ohm SMA SPST PIN Diode Switch Operating From 8 GHz to 12 GHz Up To +30 dBm

Configuration

RF Connector	SMA Female
RF Connector Specification	MIL-C-39012
Control Connector	Solder Pin
Design	Absorptive, SPST

Electrical Specifications

Frequency Range, GHz	8 to 12
Impedance, Ohms	50
Maximum Input Power, dBm	+30
Maximum Input VSWR	1.8:1
Maximum Insertion Loss, dB	2.2
Minimum Isolation, dB	70
Maximum Speed, ns	100
Power Supply 1, Volts	5
Power Supply 2, Volts	-15
Power Supply 2 Tolerance, Volts	3

Mechanical Specifications

Temperature

Operating Range, deg C	-55 to +85
Storage Range, deg C	-65 to +125

Size

Length, in [mm]	1.96 [49.78]
Width, in [mm]	0.9 [22.86]
Height, in [mm]	0.35 [8.89]

Compliance Certifications (visit www.Pasternack.com for current document)

RoHS Compliant	Yes
----------------	-----

Click the following link (or enter part number in "SEARCH" on website) to obtain additional part information including price, inventory and certifications: [50 Ohm SMA SPST PIN Diode Switch Operating From 8 GHz to 12 GHz Up To +30 dBm PE7109](#)

The information contained in this document is accurate to the best of our knowledge and representative of the part described herein. It may be necessary to make modifications to the part and/or the documentation of the part, in order to implement improvements. Pasternack reserves the right to make such changes as required. Unless otherwise stated, all specifications are nominal.



50 Ohm SMA SPST PIN Diode Switch Operating
From 8 GHz to 12 GHz Up To +30 dBm

TECHNICAL DATA SHEET

PE7109

Plotted and Other Data

Notes:

Values at 25 °C, sea level

50 Ohm SMA SPST PIN Diode Switch Operating From 8 GHz to 12 GHz Up To +30 dBm from Pasternack Enterprises has same day shipment for domestic and International orders. Our RF, microwave and fiber optic products maintain a 99% availability and are part of the broadest selection in the industry.

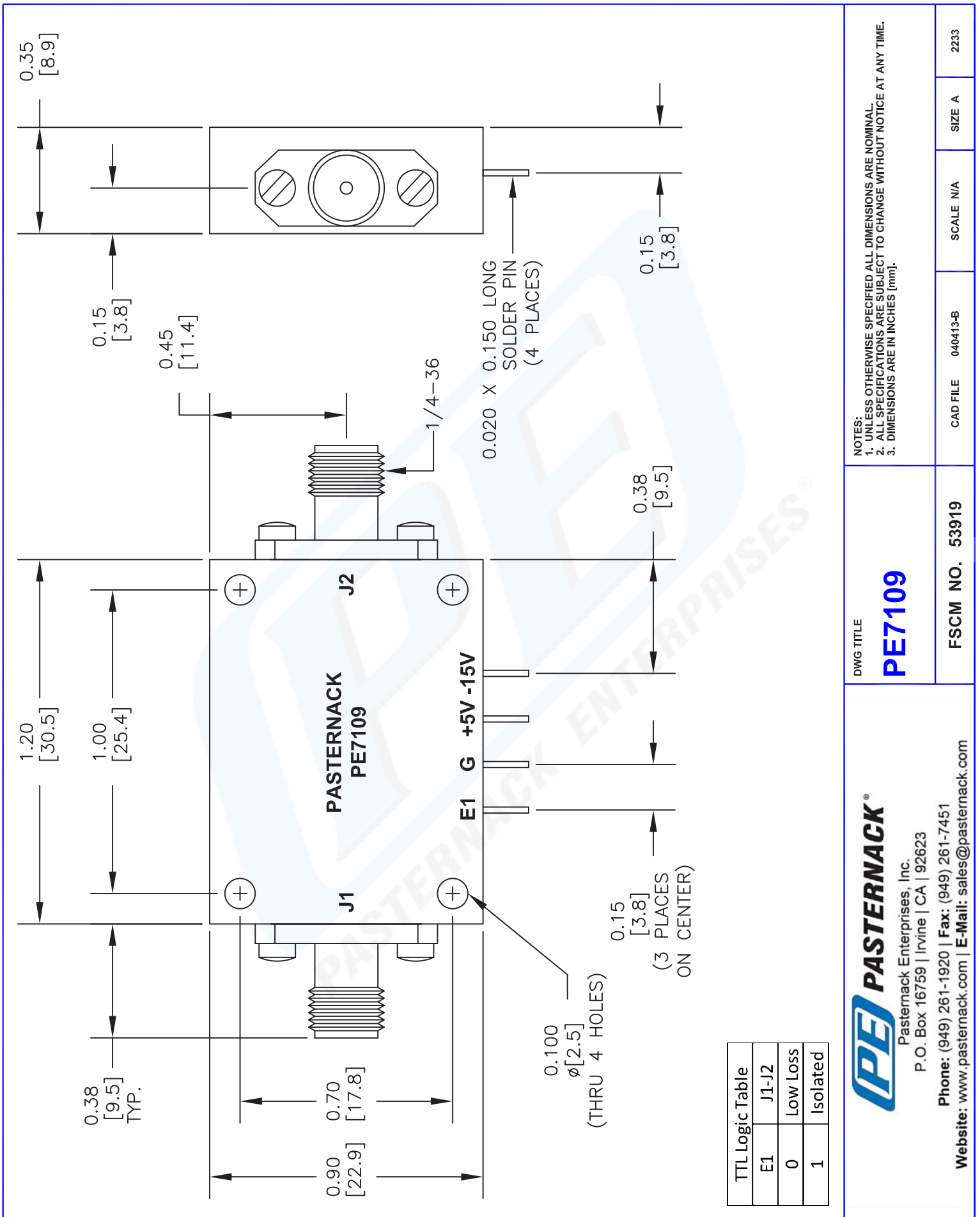
Click the following link (or enter part number in "SEARCH" on website) to obtain additional part information including price, inventory and certifications: [50 Ohm SMA SPST PIN Diode Switch Operating From 8 GHz to 12 GHz Up To +30 dBm PE7109](http://www.pasternack.com/50-ohm-sma-spst-pin-switch-8000-mhz-12000-mhz-1-watt-pe7109-p.aspx)

URL: <http://www.pasternack.com/50-ohm-sma-spst-pin-switch-8000-mhz-12000-mhz-1-watt-pe7109-p.aspx>

The information contained in this document is accurate to the best of our knowledge and representative of the part described herein. It may be necessary to make modifications to the part and/or the documentation of the part, in order to implement improvements. Pasternack reserves the right to make such changes as required. Unless otherwise stated, all specifications are nominal.

PE7109 CAD Drawing

50 Ohm SMA SPST PIN Diode Switch Operating From 8 GHz to 12 GHz Up To +30 dBm



TTL Logic Table	J1-J2
E1	0
	Low Loss
	1
	Isolated

NOTES:
 1. UNLESS OTHERWISE SPECIFIED ALL DIMENSIONS ARE NOMINAL.
 2. ALL SPECIFICATIONS ARE SUBJECT TO CHANGE WITHOUT NOTICE AT ANY TIME.
 3. DIMENSIONS ARE IN INCHES [mm].

DWG TITLE
PE7109

PASTERNAK
 Pasternack Enterprises, Inc.
 P.O. Box 16759 | Irvine | CA | 92623
 Phone: (949) 261-1920 | Fax: (949) 261-7451
 Website: www.pasternack.com | E-Mail: sales@pasternack.com

CAD FILE 040413-B

FSCM NO. 53919

SCALE N/A

SIZE A

2233