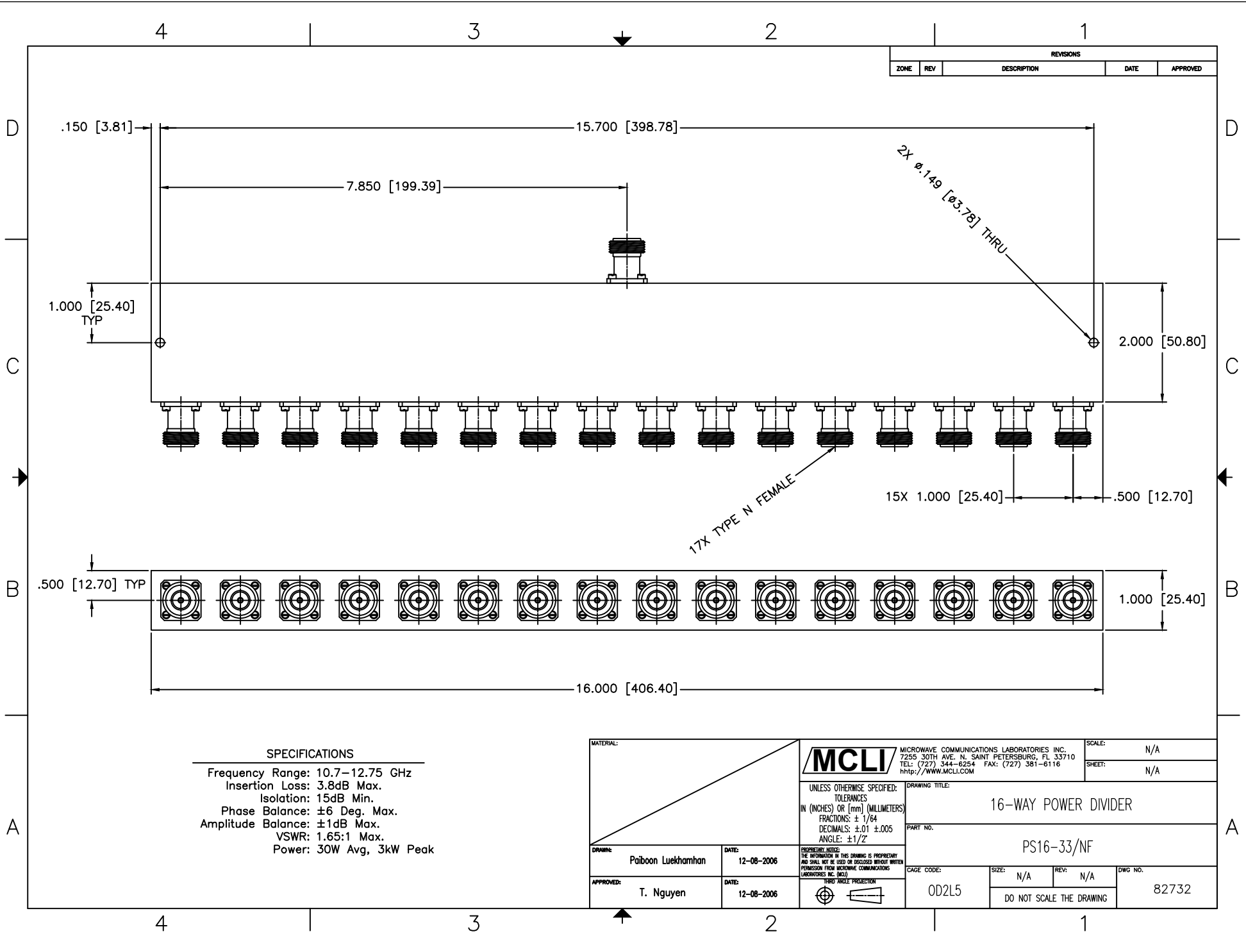


REVISIONS				
ZONE	REV	DESCRIPTION	DATE	APPROVED



SPECIFICATIONS

Frequency Range: 10.7–12.75 GHz
 Insertion Loss: 3.8dB Max.
 Isolation: 15dB Min.
 Phase Balance: ±6 Deg. Max.
 Amplitude Balance: ±1dB Max.
 VSWR: 1.65:1 Max.
 Power: 30W Avg, 3kW Peak

MATERIAL:		MCL MICROWAVE COMMUNICATIONS LABORATORIES INC. 7255 30TH AVE. N. SAINT PETERSBURG, FL 33710 TEL: (727) 544-6254 FAX: (727) 381-6116 http://www.mcll.com	SCALE: N/A
UNLESS OTHERWISE SPECIFIED: TOLERANCES IN (INCHES) OR (mm) (MILLIMETERS) FRACTIONS: ± 1/64 DECIMALS: ± 0.01 ± 0.005 ANGLE: ± 1/2°			DRAWING TITLE: 16-WAY POWER DIVIDER
DRAWN: Paiboon Luekhamhan	DATE: 12-08-2006	PART NO. PS16-33/NF	
APPROVED: T. Nguyen	DATE: 12-08-2006	CAGE CODE: OD2L5	SIZE: N/A REV: N/A DWG NO.: 82732
PROPRIETARY NOTICE: THE INFORMATION IN THIS DRAWING IS PROPRIETARY AND SHALL NOT BE USED OR DISCLOSED WITHOUT WRITTEN PERMISSION FROM MICROWAVE COMMUNICATIONS LABORATORIES INC. (MCLL)		DO NOT SCALE THE DRAWING	