

Surface Mount

Bandpass Filter

BPF-C495+

50Ω 470 to 520 MHz

The Big Deal

- High rejection (70 dB typical)
- Linear phase (± 9 deg typical over $F_c \pm 30$ MHz)
- Miniature shielded case



CASE STYLE: HU1186

Product Overview

The BPF-C495+ is a narrow band pass filter in a metal shielded package (size of 0.87" x 0.80" x .25") fabricated using SMT technology. The BPF-C495+ offers a typical pass band insertion loss of 1.7 dB with sharp roll-off and stopband rejection down to 90 dB typ. In addition, it has repeatable performance across production lots and consistent performance across temperature.

Key Features

Feature	Advantages
Minimal Phase deviation over attenuation range: ± 9 deg typical over $F_c \pm 30$ MHz.	Can provide low signal distortion for high data rate communication systems.
High rejection, 70dB typical	Achieving 90dB rejection at 1200MHz; the BPF-C495+ provides a versatile anti aliasing solution for high data rate receivers.
Good VSWR, 1.3:1 typical over passband	The BPF-C495+ has very good return loss over the operating bandwidth which enables low ripple interface when cascaded with other devices.
Sharp roll off	Provides good rejection of signals close to the passband, for improved system performance.
Metal SMT shielded case	Reduced interference to, and from surrounding components.

 **Mini-Circuits**[®]
ISO 9001 ISO 14001 AS 9100 CERTIFIED

P.O. Box 350166, Brooklyn, New York 11235-0003 (718) 934-4500 Fax (718) 332-4661 *The Design Engineers Search Engine*  Provides ACTUAL Data Instantly at minicircuits.com

IF/RF MICROWAVE COMPONENTS

For detailed performance specs
& shopping online see web site

Notes: 1. Performance and quality attributes and conditions not expressly stated in this specification sheet are intended to be excluded and do not form a part of this specification sheet. 2. Electrical specifications and performance data contained herein are based on Mini-Circuit's applicable established test performance criteria and measurement instructions. 3. The parts covered by this specification sheet are subject to Mini-Circuits standard limited warranty and terms and conditions (collectively, "Standard Terms"); Purchasers of this part are entitled to the rights and benefits contained therein. For a full statement of the Standard Terms and the exclusive rights and remedies thereunder, please visit Mini-Circuits' website at www.minicircuits.com/MCLStore/terms.jsp.

Surface Mount Bandpass Filter

BPF-C495+

50Ω 470 to 520 MHz



CASE STYLE: HU1186
PRICE: \$34.95 ea. QTY (1-9)

Features

- High rejection, 70 dB typical
- Linear phase, up to ± 9 deg typical over $F_c \pm 30$ MHz
- Good VSWR, 1.3:1 typical in passband
- Sharp insertion loss roll off
- Shielded case
- Aqueous washable

Electrical Specifications at 25°C

Parameter	F#	Frequency (MHz)	Min.	Typ.	Max.	Unit
Pass Band	Center Frequency	F_c		495		MHz
	Insertion Loss	F1-F2	470-520	2.0	3.0	dB
	VSWR	F1-F2	470-520	1.3	1.8	:1
Stop Band, Lower	Insertion Loss	DC-F3	DC-410	20	27	dB
	VSWR	DC-F3	DC-410	29		:1
Stop Band, Upper	Insertion Loss	F4-F5	625-2600	20	30	dB
	VSWR	F4-F5	625-2600	27		:1
Maximum Deviation from Linear Phase	$F_c \pm 30$ MHz	465-525		± 9	± 18	deg

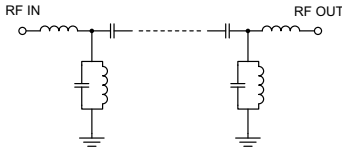
Applications

- Harmonic rejection
- Transmitters / receivers
- TV broadcasting

Maximum Ratings	
Operating Temperature	-40°C to 85°C
Storage Temperature	-55°C to 100°C
RF Power Input	1W max.

Permanent damage may occur if any of these limits are exceeded.

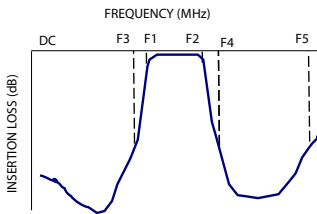
Functional Schematic



Typical Performance Data at 25°C

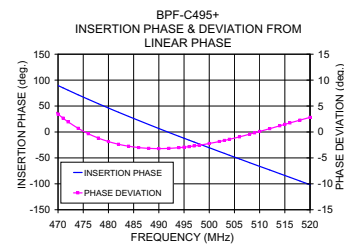
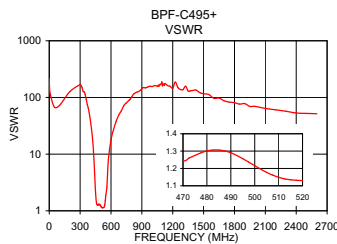
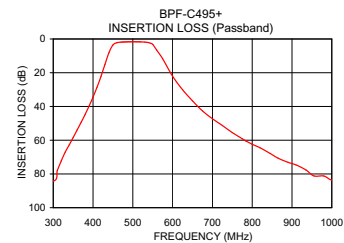
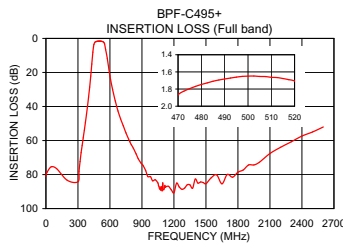
Frequency (MHz)	Insertion Loss (dB)	VSWR (:1)	Frequency (MHz)	Group Delay (nsec)
0.5	87.14	211.87	465.0	8.60
370.0	48.91	74.88	466.0	7.39
410.0	28.18	28.64	470.0	3.46
430.0	14.83	11.27	472.0	1.95
440.0	8.14	4.95	474.0	0.70
450.0	3.85	2.08	476.0	-0.34
460.0	2.45	1.34	478.0	-1.18
470.0	2.06	1.25	480.0	-1.85
480.0	1.90	1.30	484.0	-2.75
495.0	1.79	1.26	490.0	-3.21
510.0	1.76	1.15	495.0	-2.93
520.0	1.78	1.13	500.0	-2.22
550.0	3.17	1.90	503.0	-1.63
560.0	6.57	2.63	504.0	-1.41
575.0	11.67	8.09	506.0	-0.94
600.0	21.88	17.81	510.0	0.10
625.0	29.80	27.07	515.0	1.47
700.0	46.47	57.93	518.0	2.28
1200.0	90.71	145.46	520.0	2.81
2600.0	52.36	51.57	525.0	3.99

Typical Frequency Response



+ RoHS compliant in accordance with EU Directive (2002/95/EC)

The +Suffix has been added in order to identify RoHS Compliance. See our web site for RoHS Compliance methodologies and qualifications.



Mini-Circuits®
ISO 9001 ISO 14001 AS 9100 CERTIFIED



The Design Engineers Search Engine Provides ACTUAL Data Instantly at minicircuits.com

For detailed performance specs & shopping online see web site

P.O. Box 350166, Brooklyn, New York 11235-0003 (718) 934-4500 Fax (718) 332-4661

IFIRF MICROWAVE COMPONENTS

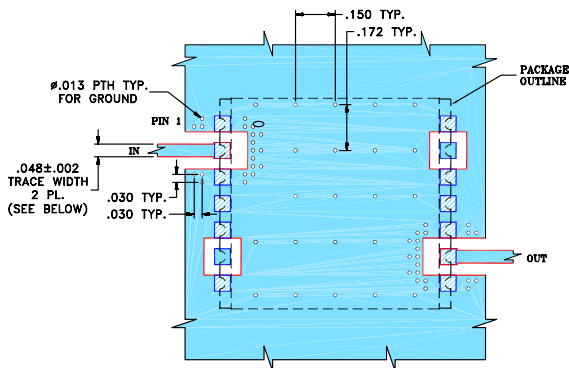
Notes: 1. Performance and quality attributes and conditions not expressly stated in this specification sheet are intended to be excluded and do not form a part of this specification sheet. 2. Electrical specifications and performance data contained herein are based on Mini-Circuit's applicable established test performance criteria and measurement instructions. 3. The parts covered by this specification sheet are subject to Mini-Circuits standard limited warranty and terms and conditions (collectively, "Standard Terms"); Purchasers of this part are entitled to the rights and benefits contained therein. For a full statement of the Standard Terms and the exclusive rights and remedies thereunder, please visit Mini-Circuits' website at www.minicircuits.com/MCLStore/terms.jsp.

REV. OR
M130724
BPF-C495+
EDR-9350AUF1
RAV/URJNY
110418
Page 2 of 3

Pad Connections

INPUT	2
OUTPUT	9
NOT CONNECTED	6,13
GROUND	1,3,4,5,7,8,10,11,12,14

Demo Board MCL P/N: TB-500+
Suggested PCB Layout (PL-294)

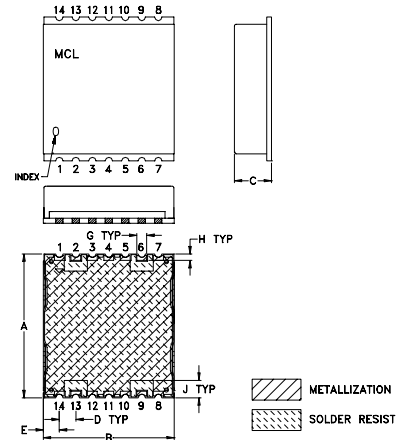


NOTES:

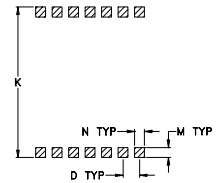
- TRACE WIDTH IS SHOWN FOR ROGERS RO4350B.
DIELECTRIC THICKNESS: .030" ± .002";
COPPER: 1/2 OZ ON EACH SIDE.
FOR OTHER MATERIALS TRACE WIDTH MAY NEED TO BE MODIFIED.
- BOTTOM SIDE OF THE PCB IS CONTINUOUS GROUND PLANE.

- DENOTES PCB COPPER LAYOUT WITH SMOBC (SOLDER MASK OVER BARE COPPER)
- DENOTES COPPER LAND PATTERN FREE OF SOLDERMASK

Outline Drawing



PCB Land Pattern



Suggested Layout,
Tolerance to be within ±.002

Outline Dimensions (inch / mm)

A	B	C	D	E	F	G	H
.870	.800	.25	.100	.097	--	.060	.040
22.10	20.32	6.35	2.54	2.46	--	1.52	1.02
J	K	L	M	N	P	wt	
.105	.910	--	.060	.060	--	grams	
2.67	23.11	--	1.52	1.52	--	2.85	