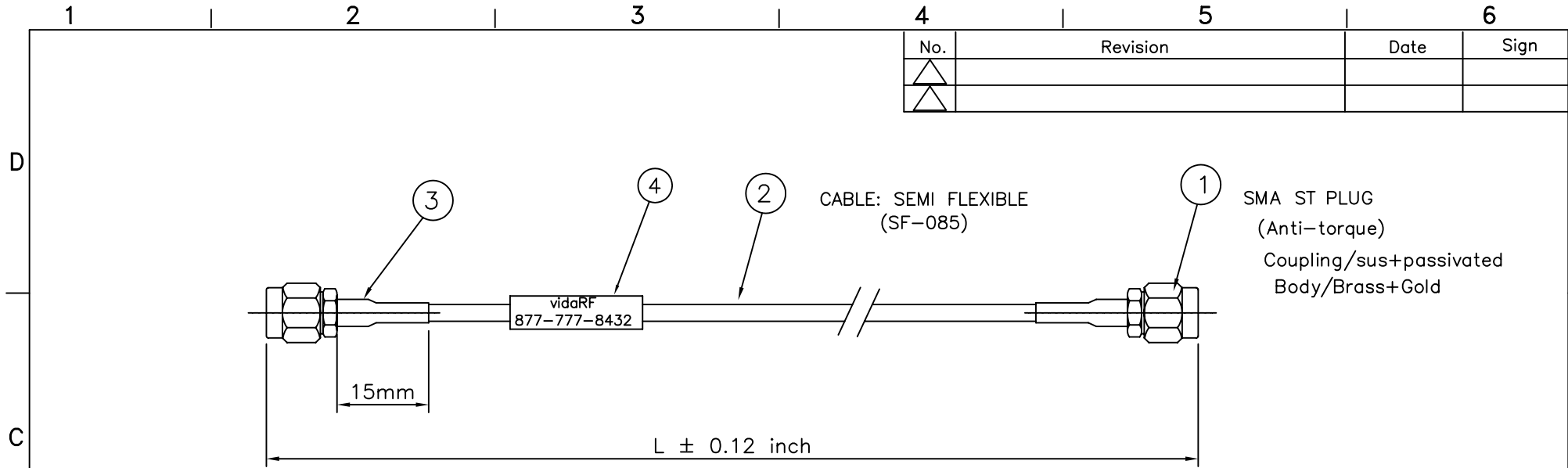


No.	Revision	Date	Sign
△			
△			



SMA ST PLUG
(Anti-torque)
Coupling/sus+passivated
Body/Brass+Gold

P/N	L (inch)
-02	2
-03	3
-04	4
-05	5
-06	6
-07	7
-08	8
-09	9
-10	10
-11	11
-12	12
-13	13

P/N	L (inch)
-14	14
-15	15
-16	16
-17	17
-18	18
-19	19
-20	20
-21	21
-22	22
-23	23
-24	24
-25	25

P/N	L (inch)
-26	26
-27	27
-28	28
-29	29
-30	30
-31	31
-32	32
-33	33
-34	34
-35	35
-36	36



4	Marking tube	1		GSHS-1625	White
3	Bonding tube	2		GSHS-3635W	Black-15mm
2	COAX CABLE	1		SF-085SC	
1	CONNECTOR(SMA-SP)	2		1S-101-AT01	
NO.	DESCRIPTION	Q'TY		PART NO.	REMARKS.
PARTS No. CA-5000-10-XX		NAME RF-CABLE ASSY		APPROVED S.K	
TOLERANCES OTHERWISE SPEC. ±0.05 ANGLES ±1°				CHECKED	
SCALE N/S	UNIT mm			DESIGNED T.P	
DWG NO. CA-5000-10-XX				DATE. 8/13/09	



CUSTOMER