

Preferred application: radio links and navigation, pcn

type	dimensions Fig.	frequency range MHz	maximum power	
			CW W	reflected W
2722 162 03591	52	960 to 1225	100	
2722 162 08341	53	1200 to 1415	20	
2722 162 07511	54	1215 to 1400	250	
2722 162 08641	55	1230 to 1365	60	
2722 162 05331	56	1350 to 1700	10	
2722 162 05571 06701	56 57	1350 to 2100		
2722 162 02492 03802	53 52	1427 to 1535	10	
2722 162 07802	58	1805 to 1880	45	
2722 162 08911	59	1805 to 1880	40	
2722 162 07861	60	1930 to 1990	45	
2722 162 08921	61	1930 to 1990	60	

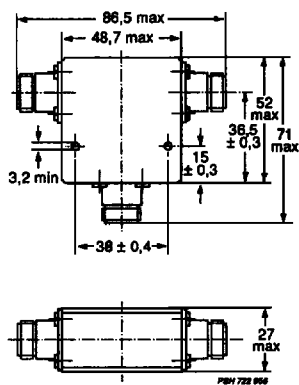


Fig. 52.

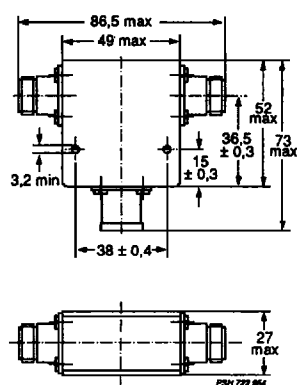


Fig. 53.

isolation		insertion loss		VSWR		temp. range °C	connector	mass g
min. dB	typ. dB	max. dB	typ. dB	max.	typ			
20	22	0,5	0,35	1,25	1,20	-10 to +60	N female	460
20		0,4		1,25		0 to +70	N female	400
19		0,3		1,25		0 to +50	HF 7/16 female	1200
20		0,4		1,25		0 to +55	SMA female, N female	180
20	23	0,4	0,3	1,2	1,15	0 to +45	SMA female	120
17		0,5		1,35		-15 to +65	SMA female	120
20	24	0,4	0,3	1,15	1,12	0 to +55	N female	400
≥ 22		≤ 0,35		≤ 1,15		-10 to +60	N cable	360
≥ 23		≤ 0,35		≤ 1,2		-10 to +85	SMA/SMB	
≥ 22		≤ 0,35		≤ 1,15		-10 to +60	N cable	
≥ 50		≤ 0,5		≤ 1,25		-10 to +65	SMB, TNC	

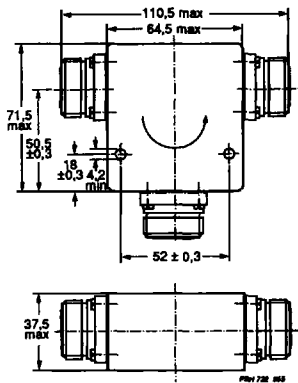


Fig. 54.

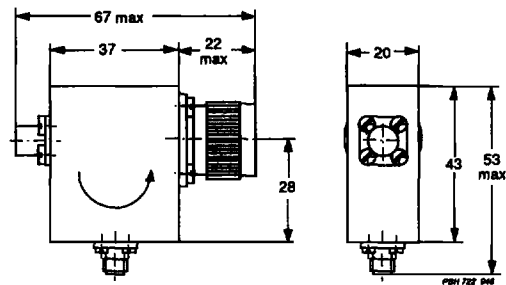


Fig. 55.

* 2x semi-rigid cable

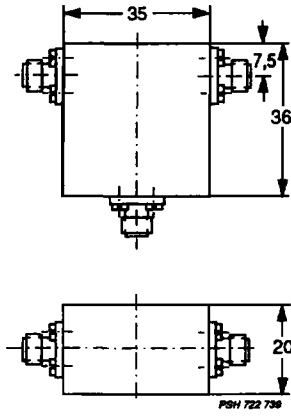


Fig. 56.

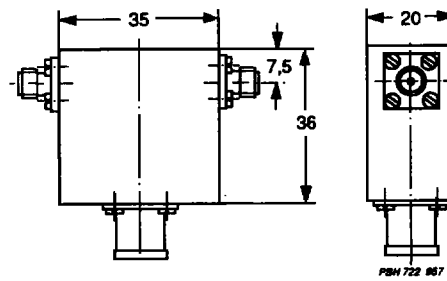


Fig. 57.

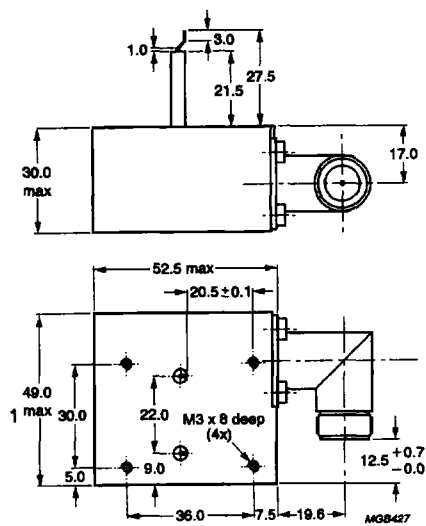


Fig. 58.

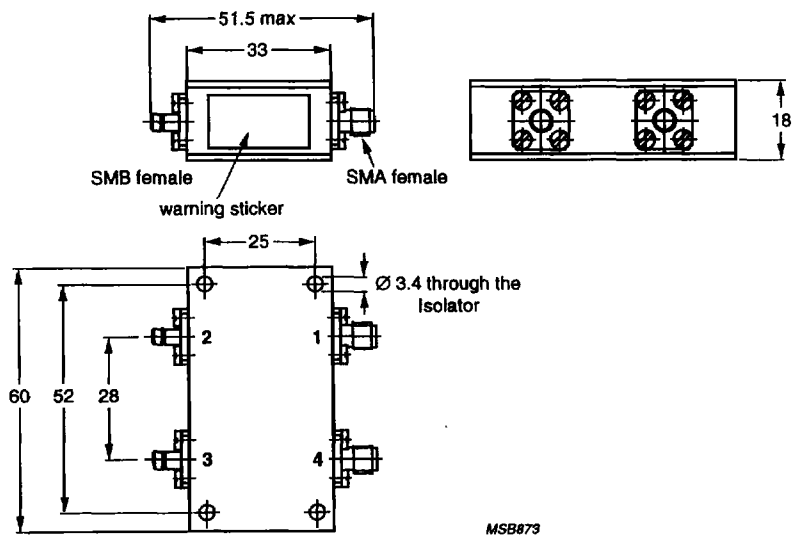


Fig. 59.

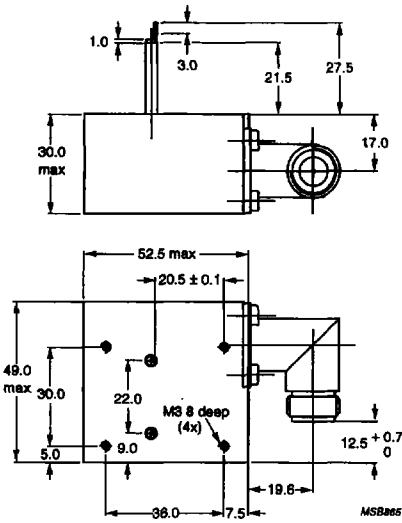


Fig. 60.

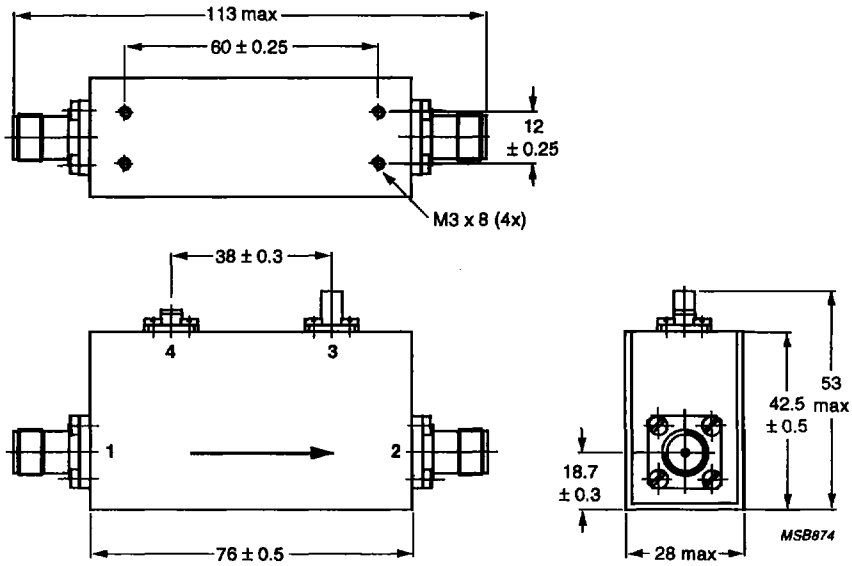


Fig. 61.