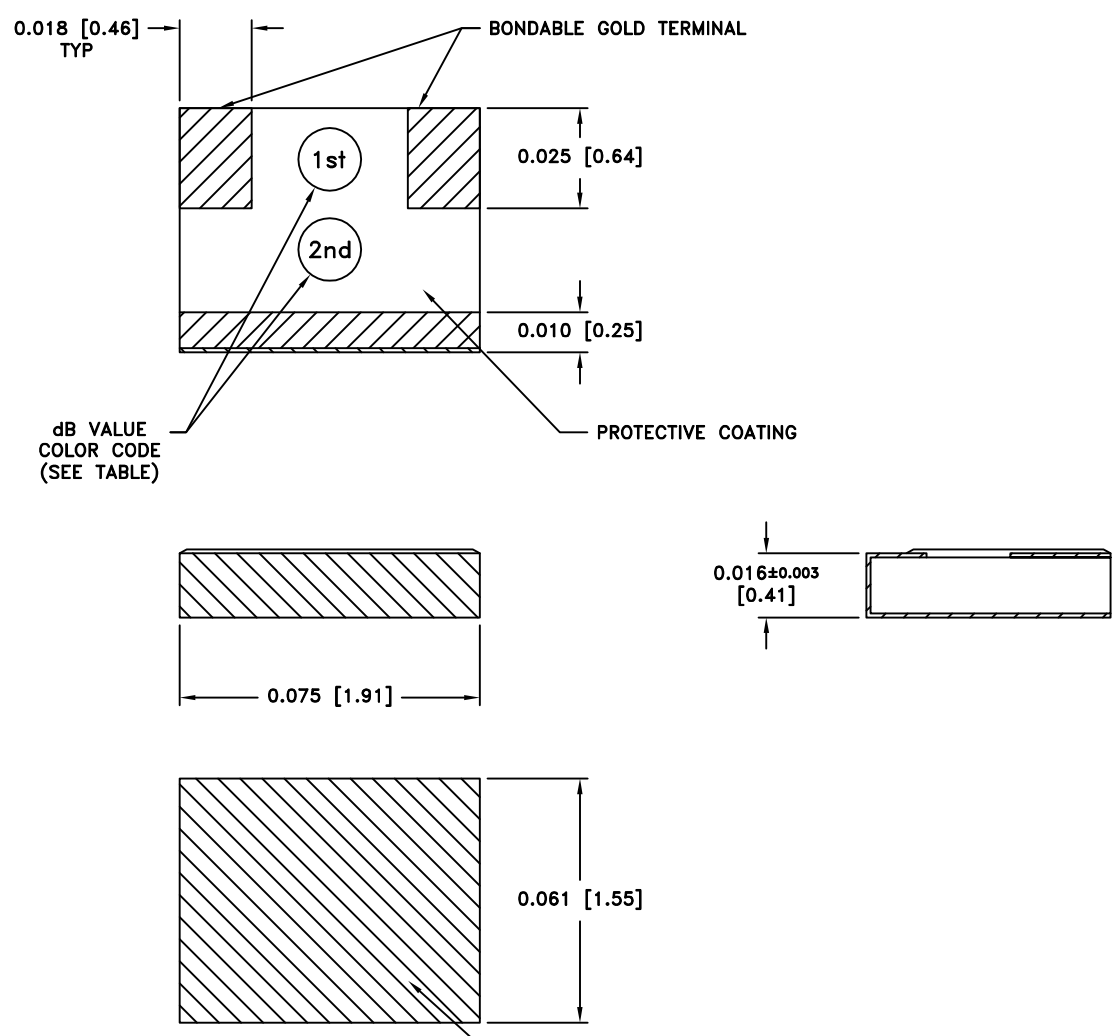






PART ID REF
HR05XXXWB1

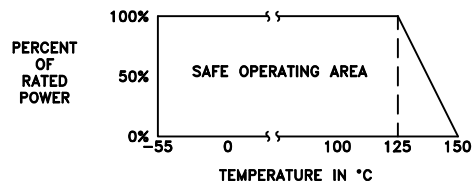


**MECHANICAL SPECIFICATIONS:**

- SUBSTRATE:  
MATERIAL - ALUMINA 96%, MIL-I-10.
- TERMINAL:  
MATERIAL - THICK FILM, BONDABLE GOLD.
- GROUND PLANE:  
MATERIAL - THICK FILM.
- RESISTIVE ELEMENT:  
MATERIAL - THIN FILM, TANTALUM NITRIDE.

METRIC EQUIVALENTS GIVEN IN [mm]  
FOR REFERENCE INFORMATION ONLY

**POWER RATING AND DERATING**



REFERENCE TABLE					
dB VAL	DOT	COLOR	dB VAL	DOT	COLOR
	1st	2nd		1st	2nd
0	BLK	---	11	BRN	BRN
1	BRN	---	12	BRN	RED
2	RED	---	13	BRN	ORG
3	ORG	---	14	BRN	YEL
4	YEL	---	15	BRN	GRN
5	GRN	---	16	BRN	BLU
6	BLU	---	17	BRN	VIO
7	VIO	---	18	BRN	GRY
8	GRY	---	19	BRN	WHT
9	WHT	---	20	RED	BLK
10	BRN	BLK			

<p>8851 SW OLD KANSAS AVE STUART, FL 34997 PHONE NO. (772)286-9300 FAX NO. (772)283-5286</p>	UNLESS OTHERWISE SPECIFIED DIMENSIONS ARE IN INCHES <b>TOLERANCES</b> FRACT --- -- ANG --- -- XX --- -- XXX ±0.005 XXXX --- --	THESE DRAWINGS AND SPECIFICATIONS ARE THE PROPERTY OF EMC TECHNOLOGY INC AND SHALL NOT BE DUPLICATED OR USED AS BASIS FOR THE MANUFACTURE OR SALE OF PARTS OR DEVICES WITHOUT PERMISSION.					
		CAGE CODE	SCALE	DRAWN BY	CHECKED BY	APPROVED BY	
		24602	N/A	JG 12/8/04		DAR 12/8/04	
		REV	CHANGE NOTICE	DRAWING NO	SHEET		
	C	EN 12-1302	1010015000	2	OF 2		