

ADAPTER WR90 N/F

90AC206NB

SPECIFICATIONS

FREQUENCY: 8.2-12.4 GHZ

VSWR: 1.25:1 MAX

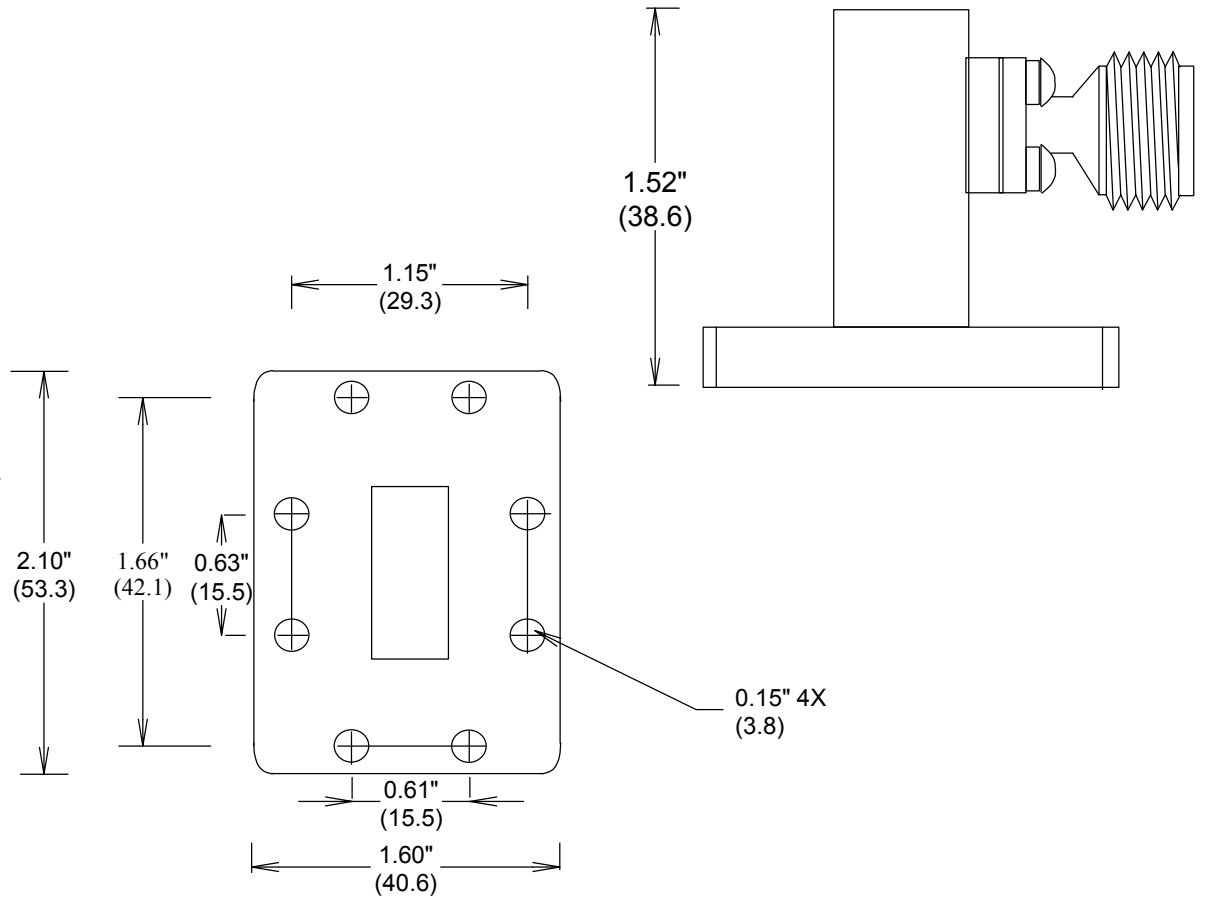
POWER CW: 150 WATTS

MATERIAL BODY: AI

MATERIAL CONNECTOR: PASSIVATED
STAINLESS STEEL

TEMPERATURE RANGE: -55° to +120°C

ROHS COMPLIANT



FAIRVIEW MICROWAVE INC.

ALLEN, TX 75013 WWW.FAIRVIEWMICROWAVE.COM

TITLE

ADAPTER WR90 N/F

SIZE	CAGE CODE	DWG NO	REV
A	3FKR5	90AC206NB	A

ALL DIMENSIONS IN inches(MM) Typical

SCALE	SHEET
-------	-------