

EMI ABSORBER FOAM for Anechoic Chamber Room – ACF Series



ACF Series absorber foams are space-saving and suitable for anechoic chambers with the combination of ferrite tiles (our **IMTL Series**). These foam absorbers are light-weight, flexible, and cover the range of 500MHz-40GHz. The graduated layers of loaded open-celled urethane foam provide effective impedance-matching layers.

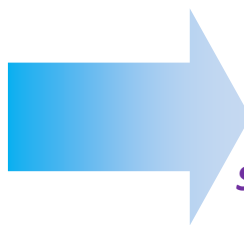
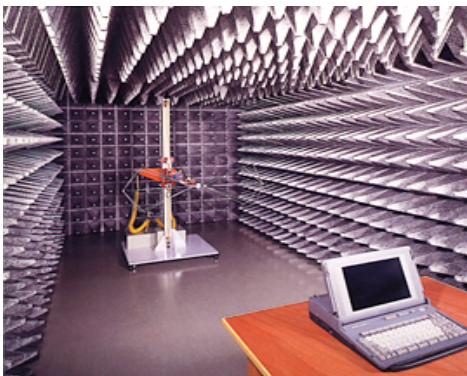
- Broadband absorption from 500 MHz to 40 GHz.
- Flexible and lightweight.
- Controls surface currents.
- Easily cut to shape.
- Easily attached with pressure sensitive adhesive.
- Conductive ground plane available.
- Surface treatments available for outdoor and harsh environment applications.

Technical Specifications

Product Part Number	ACF-51	ACF-52	ACF-19
Frequency Range	3GHz ~ 40 GHz	2.5GHz ~ 40 GHz	500MHz ~ 40 GHz
Thickness	28.5 mm	57mm	114mm
Operating Temp	-55C to 130 C		
Foam Density	32 kg/m ³		
Color	Black		
Material	Urethane (Absorber), Acrylic film (adhesive)		
Flame Retardant	UL94-HB Equivalent		
Available Sheet Size	608mm x 608mm		
Adhesive thickness	0.05mm (acrylic transfer film adhesive)		

Use for Anechoic Chambers

Example of Anechoic Chamber Room with **ACF Absorber**



ACF Absorber saves space which cone-shaped absorbers require.



Innovative

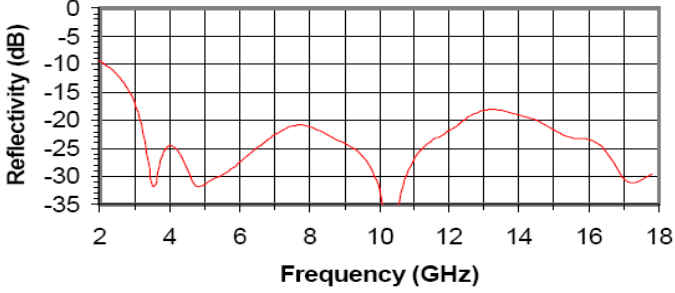
Space Saving

Cost Effective

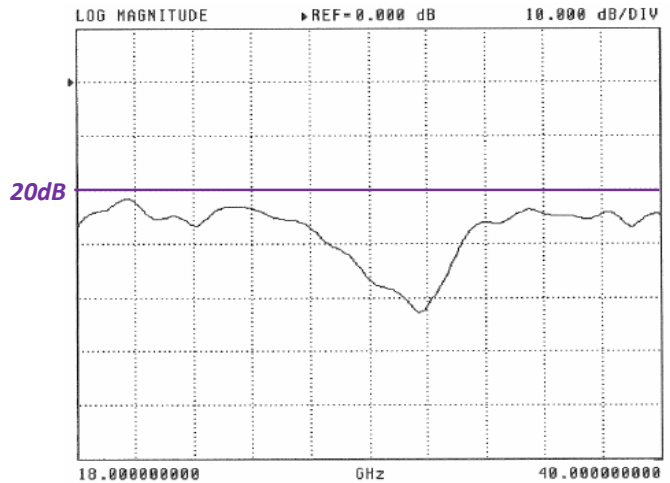
Reflection Loss

ACF-51 Series

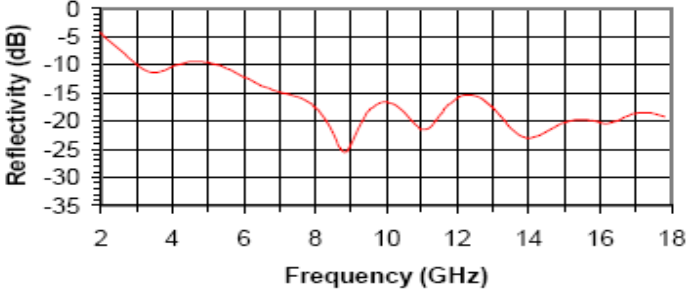
Reflection Loss (2-18 GHz at 7.5° incident (normal) angle, Typical)



Reflection Loss (18-40 GHz at 7.5° incident (normal) angle, Typical)

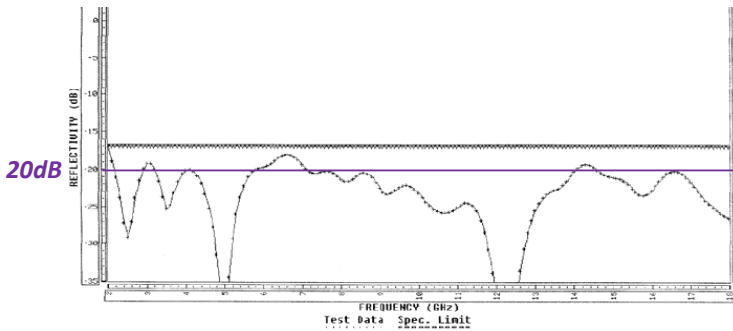


Reflection Loss (2-18 GHz at 60° incident angle, Typical)

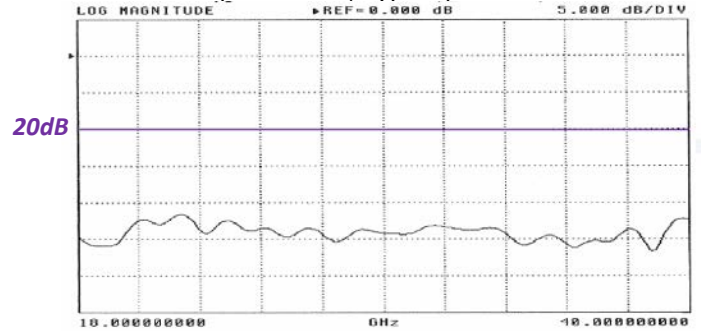


ACF-52 Series

Reflection Loss (2-18 GHz, Typical)

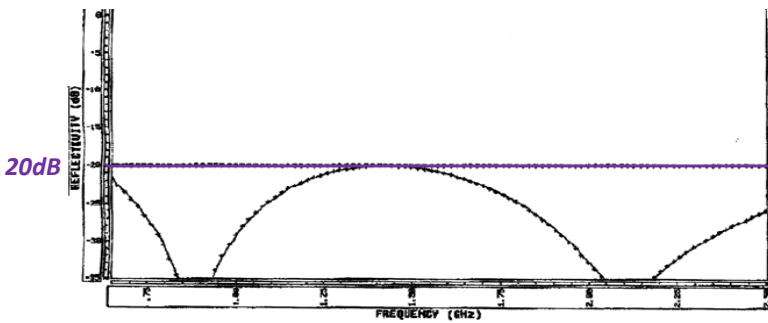


Reflection Loss (18-40 GHz, Typical)

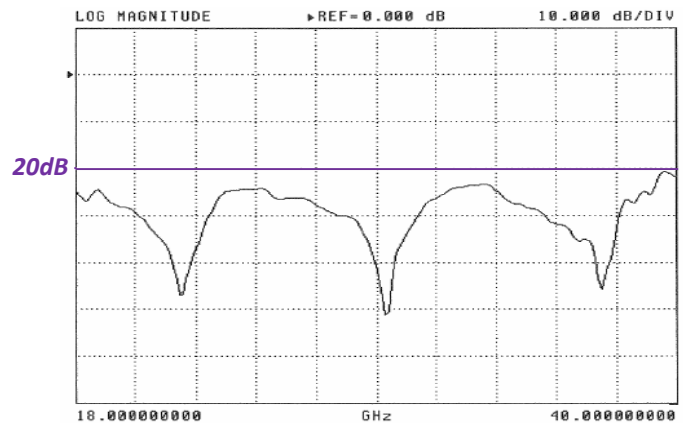


ACF-19 Series

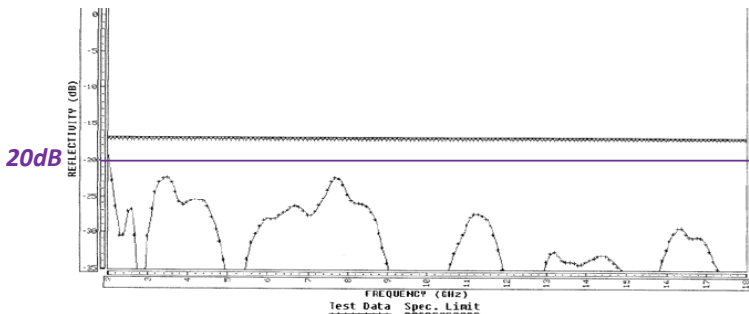
Reflection Loss (650MHz-2.5 GHz, Typical)



Reflection Loss (18-40 GHz, Typical)



Reflection Loss (2-18 GHz, Typical)



* The specifications and properties above are not guaranteed performance, and are subject to change without notice due to product improvement and specification change. Please contact us before use.

IM Intermark (USA) Inc.

1310 Tully Road Ste. 117 · San Jose · CA · 95122

tel: 408.971.2055 · fax: 408.971.6033

web: www.intermark-usa.com · email: sales@intermark-usa.com