

- 1.0 PERFORMANCE:
 1.1 FREQUENCY RANGE: DC-4GHz
 1.2 VOLTAGE RATING: 500V RMS (sea level)
 1.3 NOMINAL IMPEDANCE: 50 OHMS
 1.4 DWV: 1500 V RMS @ 60 Hz (sea level)
 1.5 TEMPERATURE RANGE: -65°C TO +165°C

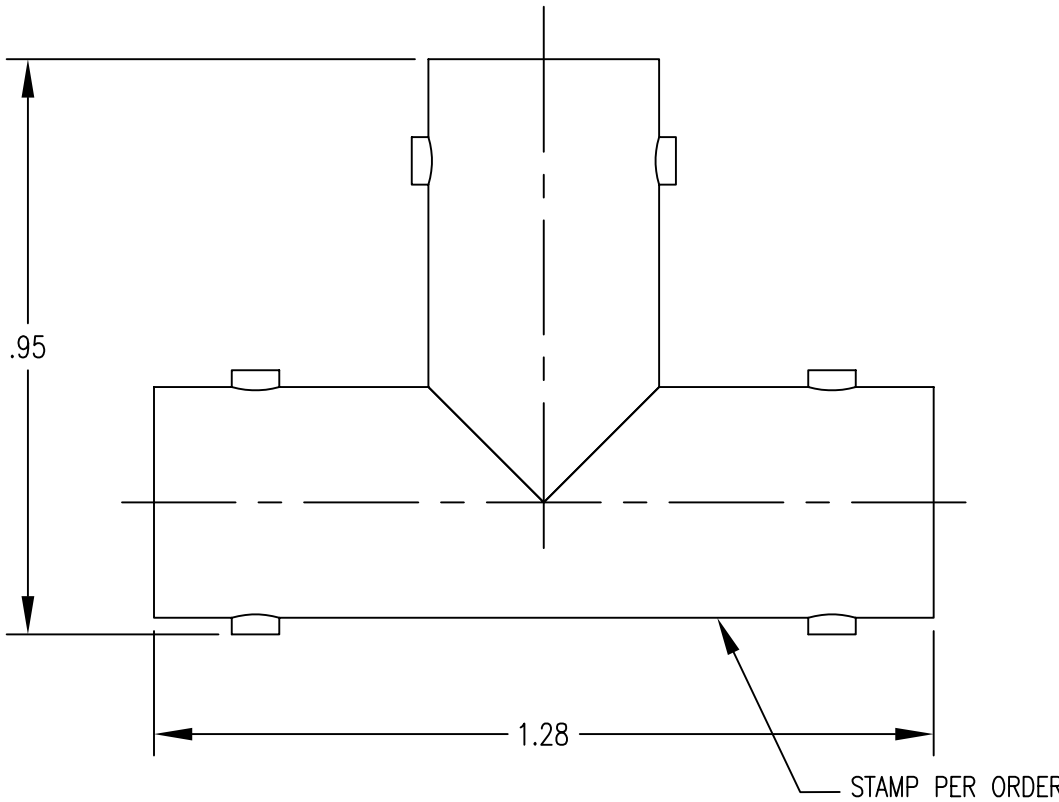
- 2.0 MATERIALS:
 2.1 DIELECTRIC: TEFLON, ASTM-D-1710

- 2.2 CONTACT: BERYLLIUM COPPER ASTM-B-196
 2.3 ALL OTHER METAL PARTS: BRASS PER ASTM-B-16

- 3.0 FINISHES:
 3.1 CONTACT: SEE TABLE
 3.2 ALL OTHER METAL PARTS: SEE TABLE

- 4.0 MECHANICAL
 4.1 INTERFACE IN ACCORDANCE WITH MIL-STD-348

DWG NO.	OL-0110-06-1		REV.	A
PLATING VARIATIONS				
PART NUMBER	BODY	CONTACT		
0110-06	NICKEL	SILVER		
0110-06 Ni/GOLD	NICKEL	GOLD		
0110-06 Si/GOLD	SILVER	GOLD		



DO NOT SCALE DRAWING

Rev.	Revisions	Disp.	Date	Dwn.	Appd.
A1	CHANGES PER SJS	NEW	2/11/05	RF	SJS
A	ORIGINAL	NEW	1/18/05		

Ref.:	REMOVE ALL BURRS AND SHARP EDGES .005 MAX.	INTERPRET PER ASME Y14.5M-1994
-------	--	--------------------------------

THIS DRAWING CONTAINS CONFIDENTIAL INFORMATION PROPRIETARY TO SAN-TRON INC. IT MUST NOT BE REPRODUCED OR DISCLOSED TO OTHERS OR USED IN ANY OTHER WAY, IN WHOLE OR PART EXCEPT AS AUTHORIZED IN WRITING BY SAN-TRON INCORPORATED.

UNLESS OTHERWISE SPECIFIED:
 ALL DIMENSIONS ARE IN INCHES.
 ALL DIMENSIONS ARE AFTER PLATING.
 .XXX = ±.005 ALL MACHINED SURFACES $\sqrt{63}$ MAX.
 .XX = ±.01 ANG. ±1/2° FRACTIONAL = ±1/64
 ◎.004 MAX. TIR. ⊥ AXIS .001

THIRD ANGLE PROJECTION	DWN	LAP	1/18/05
	CHKD	SJS	1/18/05
	APPR	FSH	1/18/05



SAN-TRON, INC.
 4 NEWBURYPORT TPK. IPSWICH MA USA 01938
 TEL: 978 - 356 -1585 FAX: 978 - 356 -1573
 WWW.santron.com E MAIL: santron@santron.com

TITLE		BNC TEE ADAPTER (F-F-F)	
MATERIAL:		FINISH:	
SEE NOTE 2.0		SEE NOTE 3.0	
CAGE CODE: 50896	DWG NO.	REV.	
SCALE 4:1	OL-0110-06-1	A	