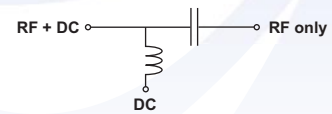
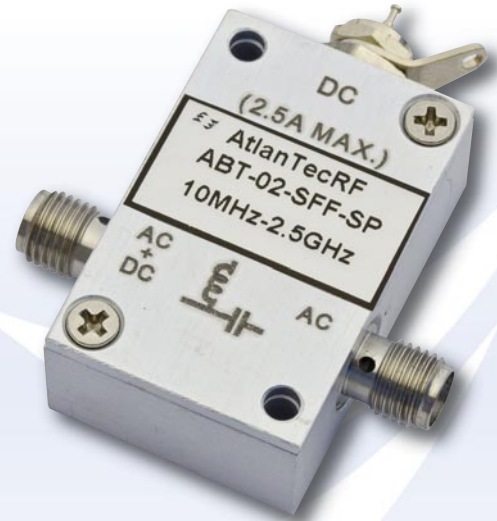


## Bias Tees ABT Series

- Frequency up to 50GHz

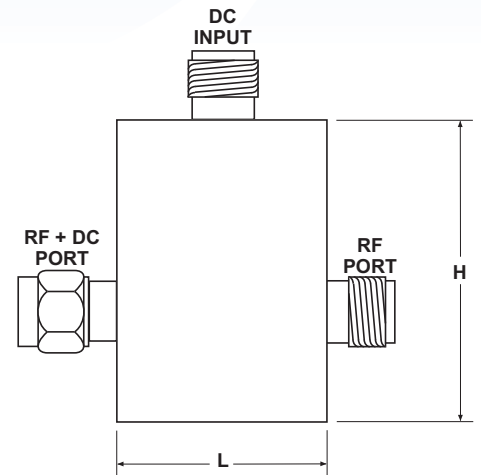
The ABT series of Bias Tees are 3-port devices which allow DC bias to be either added to or subtracted from an RF signal line without affecting the RF signal. These Bias Tees can be used in transmission systems to deliver DC power and RF signal to amplifier and frequency converter components using only one coaxial cable.



General Specifications	
Impedance	50 ohms
SMA Connectors	Passivated Stainless Steel
Type N Connectors	Passivated Stainless Steel
2.92mm Connectors	Passivated Stainless Steel
2.4mm Connectors	Passivated Stainless Steel
BNC Connectors	Nickel Plated Brass
Conductors	Gold Plated Beryllium Copper
RoHS Compliant	

### Model Number System

Series	Frequency Range	RF Connector Type	XX = RF Connector Gender	YY = DC Connector Type
ABT-02	10MHz-2.5GHz	S = SMA	M = Male	SP = Solder Post
ABT-06	10MHz-6.0GHz	N = Type N	F = Female	SF = SMA Female
ABT-12	10MHz-12.0GHz	K = 2.92mm		BF = BNC Female
ABT-18	50KHz-18.0GHz	E = 2.4mm		
ABT-26	50KHz-26.5GHz			
ABT-40	50KHz-40.0GHz			
ABT-50	50KHz-50.0GHz			



### Example model numbers

ABT-18-SMF-SP 50KHz-18.0GHz, SMA Male/Female, Solder Post DC Connector  
 ABT-40-KFM-SF 50KHz-40.0GHz, K (2.92mm) Female/Male, SMA Female DC Connector  
 ABT-50-EFF-SP 50KHz-50.0GHz, 2.4mm Female/Female, Solder Post DC Connector

Model No.	Frequency Range	Connector Type	Insertion Loss (dB)		VSWR (:1)		Isolation RF to Bias port (dB) Typ.	DC Voltage (VDC) Max.	DC Current (A) Max.	RF Power (Watts) Max.	Dimensions inches (mm) excluding connectors	
			Typ.	Max.	Typ.	Max.					Length (L)	Height (H)
ABT-02-SXX-YY	10MHz-2.5GHz	SMA	0.5	1.0	1.40	1.50	30	100	2.5	5	0.85 (21.59)	1.29 (32.77)
ABT-06-SXX-YY	10MHz-6.0GHz	SMA	1.0	1.25	1.40	1.50	30	100	2.5	5	0.85 (21.59)	1.29 (32.77)
ABT-12-SXX-YY	10MHz-12.0GHz	SMA	2.0	3.0	1.75	2.00	30	100	2.5	5	0.85 (21.59)	1.29 (32.77)
ABT-18-SXX-YY	50KHz-18.0GHz	SMA		1.5 (50KHz-18GHz)		1.80	30	25	0.75		0.63 (16.00)	1.20 (30.48)
ABT-26-SXX-YY	50KHz-26.5GHz	SMA		3.0 (18-26.5GHz)		1.80	30	25	0.75		0.63 (16.00)	1.20 (30.48)
ABT-02-NXX-YY	10MHz-2.5GHz	Type N	0.5	1.0	1.40	1.50	30	100	2.5	5	0.85 (21.59)	1.29 (32.77)
ABT-06-NXX-YY	10MHz-6.0GHz	Type N	1.0	1.25	1.40	1.50	30	100	2.5	5	0.85 (21.59)	1.29 (32.77)
ABT-12-NXX-YY	10MHz-12.0GHz	Type N	2.0	3.0	1.75	2.00	30	100	2.5	5	0.85 (21.59)	1.29 (32.77)
ABT-26-KXX-YY	50KHz-26.5GHz	2.9mm		1.5 (50KHz-18GHz) 3.0 (18-26.5GHz)		1.80	50 (250KHz-26.5GHz)	25	0.75	1	0.63 (16.00)	1.20 (30.48)
ABT-40-KXX-YY	50KHz-40.0GHz	2.9mm		1.5 (50KHz-18GHz) 3.0 (18-40GHz)		1.80	30 (100KHz-40GHz)	25	0.15	1	0.63 (16.00)	1.20 (30.48)
ABT-50-EXX-YY	50KHz-50.0GHz	2.4mm	0.5 (100KHz) 3.0 (40-50GHz)	1.5 (50KHz-18GHz) 4.0 (40-50GHz)		1.80	50 (250KHz-26GHz) 30 (100KHz-50GHz)	25	0.15		0.63 (16.00)	1.20 (30.48)

For further specifications and detailed outline drawings please consult the factory.

We reserve the right to change standard product specifications without notice but will be pleased to consider control drawings for quotation.

### Passive Components

Tel. +44 (0) 1376 550220 Fax. +44 (0) 1376 552145 Email: sales@atlantecrf.com www.atlantecrf.com  
 40A Springwood Drive, Braintree, Essex CM7 2YN, England

