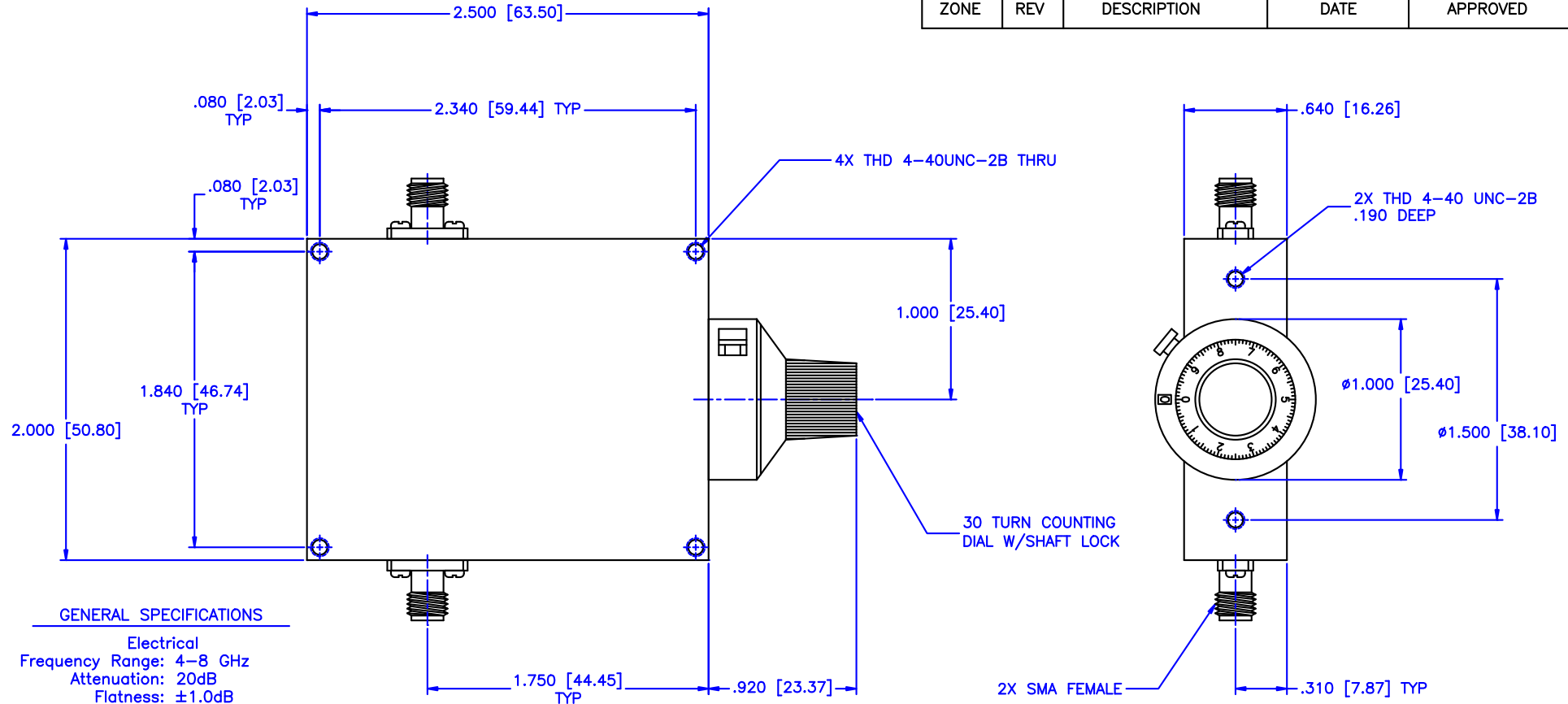


REVISIONS				
ZONE	REV	DESCRIPTION	DATE	APPROVED



GENERAL SPECIFICATIONS

Electrical
 Frequency Range: 4-8 GHz
 Attenuation: 20dB
 Flatness: ±1.0dB
 VSWR: 1.50:1 Max.
 Insertion Loss per Frequency Band
 to 18 GHz: 0.5dB max.
 to 26 GHz: 0.75dB max.
 to 40 GHz: 1.50dB max.
 RF Power: 7W average, 3kW peak

Mechanical
 Body: Aluminum
 Connectors: Stainless Steel
 Finish: Unique corrosion resistant 316 stainless steel epoxy coating IAW MIL-F-14072
 Weight: 5.2oz / 150gm

Environmental
 Operating Temperature: -55°C to +110 °C
 Shock: 15 G's, 11ms, 1/2 sine
 Vibration: 3 G's overall
 Altitude: 40,000ft. Survival 25,000ft Operating

MATERIAL:			MICROWAVE COMMUNICATIONS LABORATORIES INC. 7255 30TH AVE. N. SAINT PETERSBURG, FL 33710 TEL: (727) 344-6254 FAX: (727) 381-6116 http://WWW.MCLI.COM		SCALE:	N/A
UNLESS OTHERWISE SPECIFIED: TOLERANCES IN (INCHES) OR [mm] (MILLIMETERS) FRACTIONS: ± 1/64 DECIMALS: ±.01 ±.005 ANGLE: ±1/2°			DRAWING TITLE: CONTINUOUSLY VARIABLE ATTENUATOR WITH DIAL		SHEET:	N/A
DRAWN: Paiboon Luekhamhan	DATE: 02-09-2011	PART NO. CA6-20/D		CAGE CODE:		
APPROVED: T. Nguyen	DATE: 02-09-2011	THIRD ANGLE PROJECTION 		SIZE: A	REV: N/A	DWG NO. 80640
PROPRIETARY NOTICE: THE INFORMATION IN THIS DRAWING IS PROPRIETARY AND SHALL NOT BE USED OR DISCLOSED WITHOUT WRITTEN PERMISSION FROM MICROWAVE COMMUNICATIONS LABORATORIES INC. (MCLI)		CAGE CODE: OD2L5		DO NOT SCALE THE DRAWING		