

# 3.3V Surface Mount 3.2mm x 5.0mm Oscillators V7223 & V7233 Series

# CONNOR WINFIELD



## Features:

RoHS Compliant  
3.3V Operation  
Small Surface Mount Package:  
5.0mm x 3.2mm x 1.2mm  
Overall Frequency Tolerance:  
V7223:  $\pm 50$ ppm  
V7233:  $\pm 100$ ppm  
Low Jitter <1pS RMS  
Temperature Range -40° to 85°C  
Enable / Disable Pad 6  
Tape and Reel Packaging

## VCXO

The Connor-Winfield, RoHS compliant, V7223 and V7233 are hermetically sealed, Surface Mount, 3.3V Voltage Controlled Crystal Oscillators (VCXO) with Tri-State Enable/Disable function on pad 6. The V7223 and V7233 are designed for phased lock loop applications requiring low jitter and tight stability over the industrial temperature range.

2111 Comprehensive Drive  
Aurora, Illinois 60505  
Phone: 630-851-4722  
Fax: 630-851-5040  
**www.conwin.com**  
US Headquarters:  
630-851-4722  
European Headquarters:  
+353-61-472221

## Absolute Maximum Ratings

Parameter	Minimum	Nominal	Maximum	Units	Notes
Storage Temperature	-55	-	125	°C	
Supply Voltage (Vcc)	-0.5	-	7.0	Vdc	
Control Voltage (Vc)	-0.5	-	Vcc	Vdc	

## Operating Specifications

Parameter	Minimum	Nominal	Maximum	Units	Notes
Frequency Range (Fo)	2.0	-	52	MHz	
Frequency Tolerance					
Model V7223	-50	-	50	ppm	1
Model V7233	-100	-	100	ppm	
Operating Temperature Range	-40	-	85	°C	
Supply Voltage (Vcc)	3.135	3.3	3.465	Vdc	
Supply Current (Icc)					
2.0 to 29.999 Mhz	-	-	15	mA	
30 to 52 MHz	-	-	25	mA	
Jitter:					
(BW=12kHz to 20 MHz)	-	-	1	ps RMS	
(BW=10Hz to 20 MHz)	-	-	5	ps RMS	

## Input Characteristics

Parameter	Minimum	Nominal	Maximum	Units	Notes
Control Voltage Range (Vc)	0.15	1.65	3.15	Vdc	
Frequency Pullability @ 25°C	$\pm 100$	-	-	ppm	
Monotonic Linearity	-10	-	10	%	
Input Impedance	-	50K	-	Ohm	
Modulation Bandwidth (3dB)	10	-	-	KHz	
Enable Input Voltage - High (Vih)	2.7	-	-	Vdc	2
Disable Input Voltage - Low (Vil)	-	-	0.3	Vdc	

## LVC MOS Output Characteristics

Parameter	Minimum	Nominal	Maximum	Units	Notes
Load	-	-	15	pf	
Voltage High (Voh)	2.7	-	-	Vdc	
Voltage Low (Vol)	-	-	0.33	Vdc	
Current High (Ioh)	-1	-	-	mA	
Current Low (Iol)	-	-	4	mA	
Duty Cycle at 50% of Vcc	40	50	60	%	
Rise / Fall Time 20% to 80%	-	-	5	nS	
Start-up Time	-	-	10	mS	

## Notes:

1. Referenced to (Fo) measured with control voltage @ 2.5Vdc. Inclusive of frequency vs. temperature stability, supply voltage/load change, shock and vibration, 15 years aging.
2. The Output is enabled with no connection on the enable pin. Output is at high impedance when disabled.



Bulletin **Vx593**  
Page **1 of 2**  
Revision **00**  
Date **20 Sept 2007**

### Package Characteristics

Package	Hermetically sealed, ceramic leadless package.
---------	--

### Environmental Characteristics

Temperature Cycle	The specimen shall meet electrical characteristics after tested 5 cycles of -55°C / 30 minutes and +125°C / 30 minutes
Hermetical	No bubbles appear in Flourinert (FC-43) at 125°C ±5°C for 5 minutes
Solvent Resistance	Marking will withstand immersion in Isopropyl Alcohol or Trichloroethylene

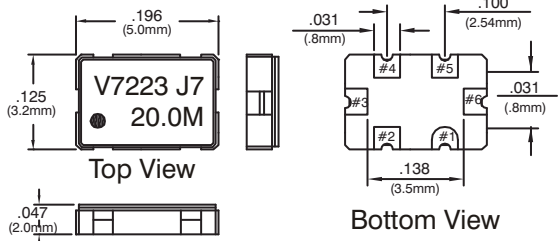
### Soldering

General Conditions	260°C max x 10 sec max x 2 times max or 230°C max x 180 sec max x 1 time
Typical Operation Data (Vapor phase reflow)	20 to 100 sec up to 215°C, 50 sec at 215°C, then down to room temperature per 1 to 5°C / sec

### Mechanical Characteristics

Free Drop	The specimen shall meet electrical characteristics after tested 3 times, Free Drop testing on the hard wooden board from a height of 75 cm.
Vibration	The specimen shall meet electrical characteristics after tested by the following conditions: 10-55Hz 1.5mm Amplitude, 55-2000 Hz 20 G's, 2 hours for each plane
Thermal Shock	After applied Thermal Shock of 245°C max x 10 sec max x 2 times, or 215°C max x 180 sec max, the specimen shall meet electrical characteristics
Solderability	(EIAJ-RCX-0102/101 Condition 1a) 1) Flux: MIL-F-14256 (WW Rosin=25%, Isopropyl Alcohol = 75%) 2) Solder: QQ-S-571 (Sn = 63%, Pb = 37%) 3) Solder bath temperature: 235°C ±5°C 4) Depth of immersion: Up to electrical terminal 5) Immersing time: Within 2 sec ±0.5 sec into solder bath

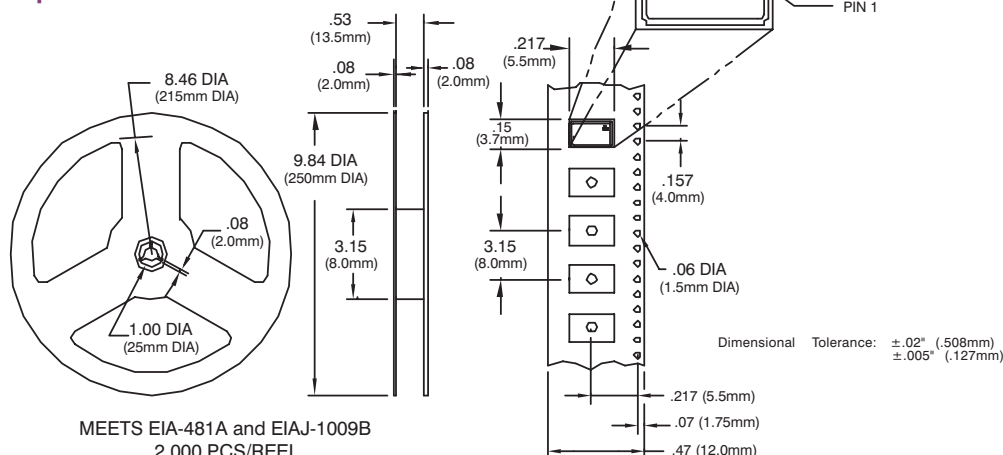
**After performing the above procedures, a newly soldered coverage shall be greater than 90%**



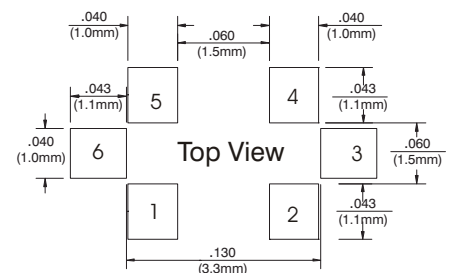
### Pin Function

- 1: Control Voltage
- 2: Ground
- 3: Ground or No Connection
- 4: Output
- 5: Vcc
- 6: Tri-State Enable/Disable

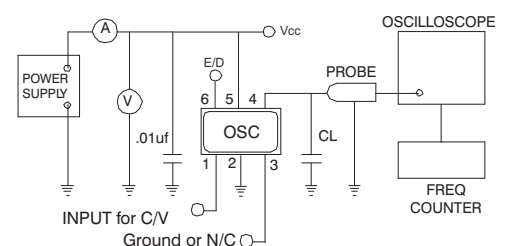
### Tape and Reel Dimensions



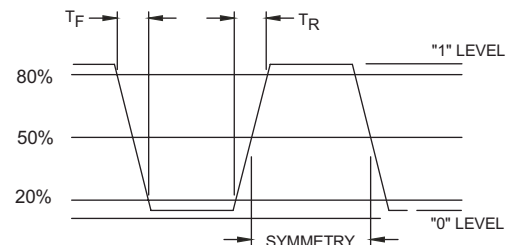
### Suggested Pad Layout



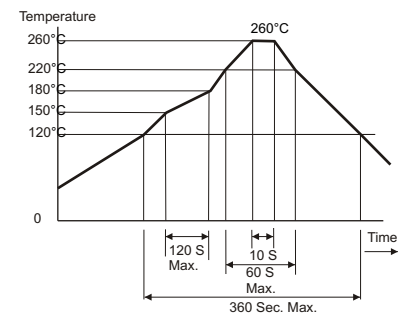
### Test Circuit



### Output Waveform



### Solder Profile



### Ordering Information

**V7223 - 020.0M**

VCXO SERIES CENTER FREQUENCY

Bulletin	<b>Vx593</b>
Page	<b>2 of 2</b>
Revision	<b>00</b>
Date	<b>20 Sept 2007</b>