

SPECIFICATIONS

FREQUENCY RANGE: DC-18 GHz

VSWR: 1.25:1 MAX.

INPUT POWER: 2 WATTS (1kW PEAK)

IMPEDANCE: 50 OHMS

OPERATING TEMPERATURE: -55°C to +150°C

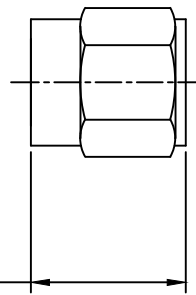
MECHANICAL

CONNECTOR BODY: PASSIVATED STAINLESS STEEL

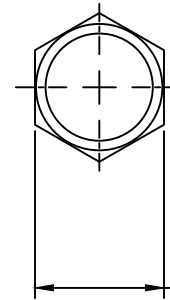
CONTACT PROBE: GOLD PLATE BERYLLIUM COPPER

TYPE: SMA MALE

REVISIONS				
ZONE	REV	DESCRIPTION	Date	APPROVED



.375 [9.53]



.313 [7.94] HEX

MATERIAL:		MCLI MICROWAVE COMMUNICATIONS LABORATORIES INC. 7255 30TH AVE. N. SAINT PETERSBURG, FL 33710 TEL: (727) 344-6254 FAX: (727) 381-6116 http://WWW.MCLI.COM	SCALE:	N/A
			SHEET:	N/A
UNLESS OTHERWISE SPECIFIED: TOLERANCES IN (INCHES) OR [mm] (MILLIMETERS) FRACTIONS: ± 1/64 DECIMALS: ±.01 ±.005 ANGLE: ±1/2°		DRAWING TITLE:	SMA MALE TERMINATION	
PROPRIETARY NOTICE: THE INFORMATION IN THIS DRAWING IS PROPRIETARY AND SHALL NOT BE USED OR DISCLOSED WITHOUT WRITTEN PERMISSION FROM MICROWAVE COMMUNICATIONS LABORATORIES INC. (MCLI)	DATE:	PART NO. TSM-2		
DATE:	12-07-1997	CAGE CODE:	SIZE: N/A	REV: N/A
APPROVED:	T. Nguyen	DATE:	12-07-1997	DWG NO. 80769
THIRD ANGLE PROJECTION		OD2L5	DO NOT SCALE THE DRAWING	