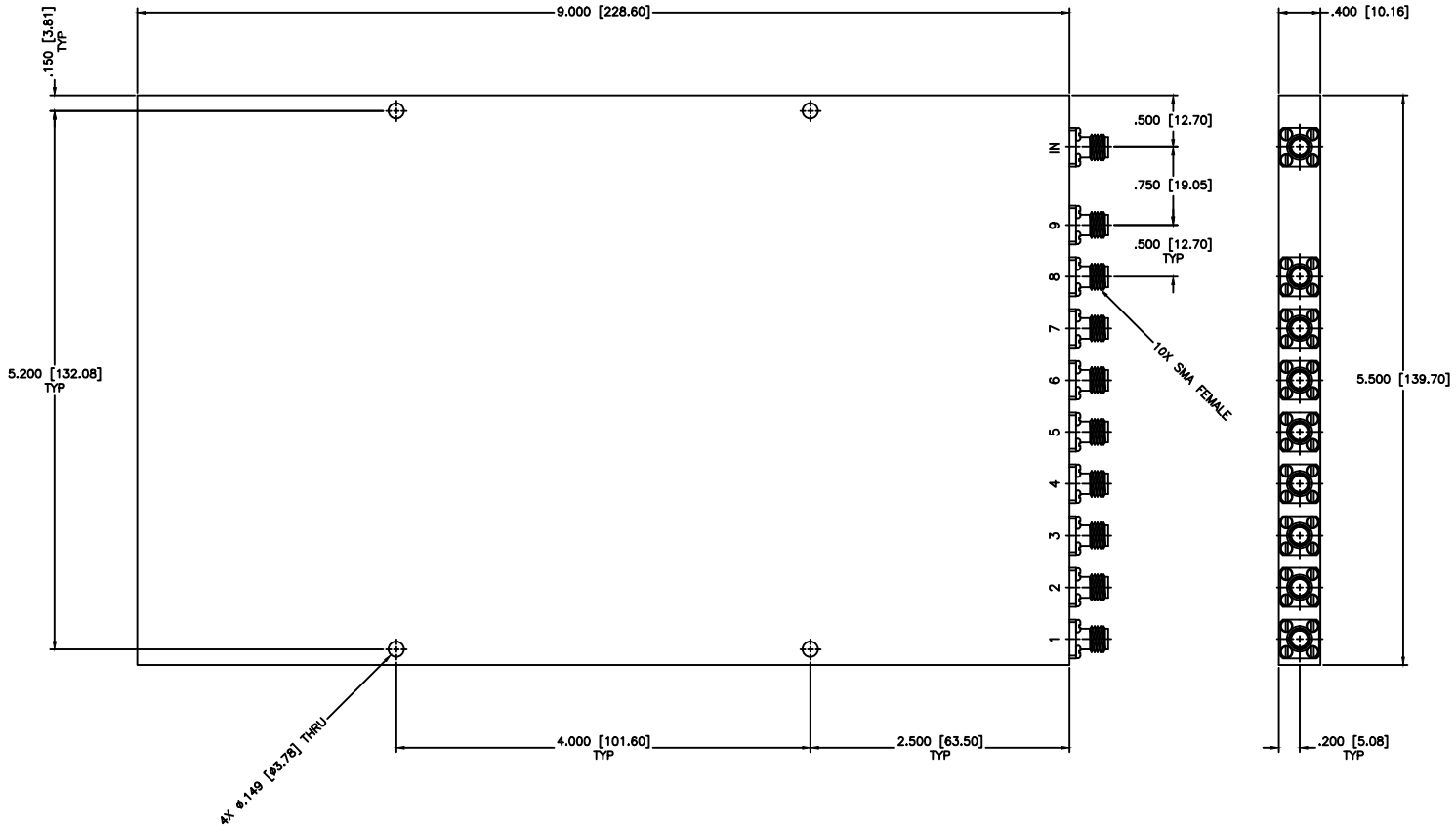


REVISIONS				
ZONE	REV	DESCRIPTION	DATE	APPROVED



SPECIFICATIONS

Frequency Range: 0.5–8 GHz
 Insertion Loss: 2.9dB Max.
 Isolation: 15dB Min.
 VSWR Input/Output: 1.90:1/1.80:1 Max.
 Amplitude Balance: 1.8dB Max.
 Power: 20W (Load vswr@1.2)
 Operating Temperature Range: -55°C to +95°C

MATERIAL:



MICROWAVE COMMUNICATIONS LABORATORIES INC.
 7255 30TH AVE. N. SAINT PETERSBURG, FL 33710
 TEL: (727) 344-6254 FAX: (727) 381-6116
 http://WWW.MCLI.COM

SCALE: N/A
 SHEET:

UNLESS OTHERWISE SPECIFIED:
 TOLERANCES
 IN (INCHES) OR [mm] (MILLIMETERS)
 FRACTIONS: ± 1/64
 DECIMALS: ± .02 ± .008
 ANGLE: ± 1/2°

DRAWING TITLE:
9-WAY POWER DIVIDER

PART NO.:
PS9-17

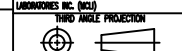
DRAWN:
 Paiboon Luakhamhan

DATE:
 01-10-2012

PROPRIETARY NOTICE:
 THE INFORMATION IN THIS DRAWING IS PROPRIETARY
 AND SHALL NOT BE USED OR DISCLOSED WITHOUT WRITTEN
 PERMISSION FROM MICROWAVE COMMUNICATIONS
 LABORATORIES INC. (MCLI)

APPROVED:
 T. Nguyen

DATE:
 01-10-2012



CAGE CODE:
 OD2L5

SIZE: N/A

REV: N/A

DWG NO.: 85964

DO NOT SCALE THE DRAWING