



**ANATECH ELECTRONICS INC**  
RF & Microwave Filters & Products

# INMARSAT Ceramic BPF

## Part Number: AM1555B539



### Electrical specifications

**Center Frequency:** 1555 MHz  
**Bandwidth:** 60 MHz  
**Input / Output Impedance:** 50 Ohms  
**Passband:** 1525-1585 MHz  
**Passband Insertion Loss:** 1525-1585 MHz 1.5 dB  
**Passband Ripple:** 1.0 dB max  
**Passband Return Loss:** 1525-1585 MHz 12.0 dB  
**Rejection:** 1460 MHz 25.0 dB  
**Rejection 2:** 1210 MHz 55.0 dB  
**Rejection 3:** 1626.5 MHz 20.0 dB  
**Rejection 4:** 1710 MHz 40.0 dB  
**Power Handling:** 1 Watt

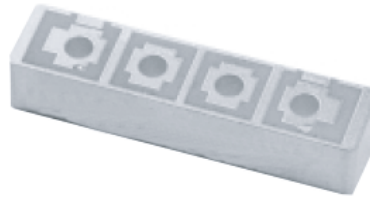
### Mechanical

**Mounting Method:** SMT  
**Dimensions:** 33.58 x 7.85 x 6.68 mm

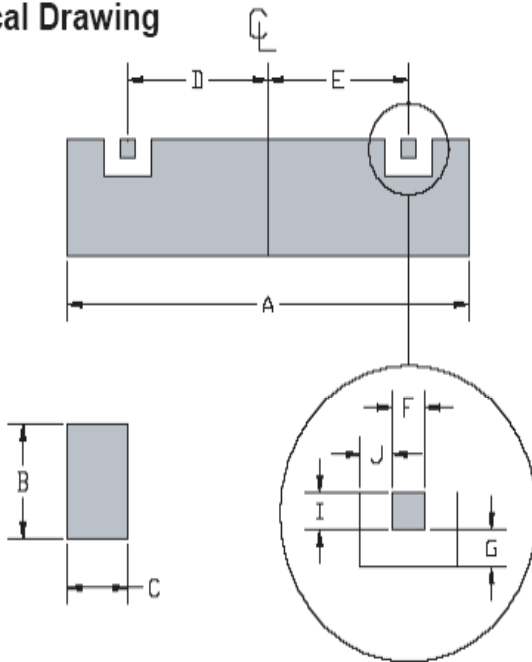
### Environmental

**Operating Temperature:** -40°C to +85°C  
**Storage Temperature:** -50°C to +90°C

**This product is RoHs compliant.**



### Mechanical Drawing



Dim	Nominal (mm)	Tolerance (mm) +/- or max
A	33.580	max
B	6.68	max
C	7.850	max
D	10.808	0.127
E	10.808	0.127
F	2.616	0.127
G	0.635	0.127
I	2.032	0.127
J	0.635	0.127



**ANATECH ELECTRONICS INC**  
RF & Microwave Filters & Products

# INMARSAT Ceramic BPF

## Part Number: AM1555B539



### Response Plot:

