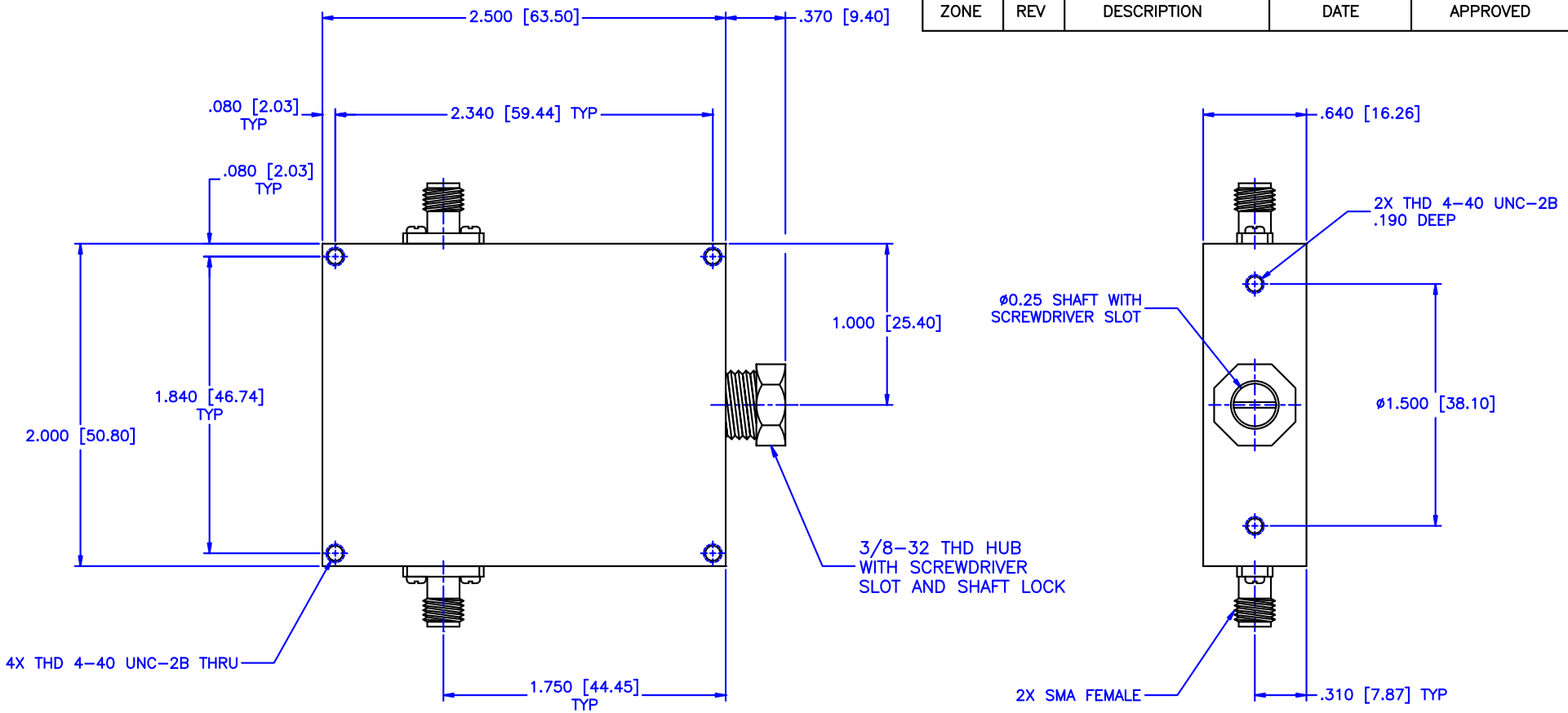


REVISIONS				
ZONE	REV	DESCRIPTION	DATE	APPROVED



Specifications:

Frequency Range: 8-18 GHz  
 Attenuation: 40dB  
 Insertion Loss: 0.5 Max.  
 VSWR: 1.50:1  
 RF Power: 7W Average, 3kW Peak

Environmental:

Temperature range: -55°C to +110°C  
 Shock: 15 G's, 11mS, 1/2 sine  
 Vibration: 3 G's overall  
 Altitude: 40,000 ft. Survival 25,000ft Operating

MATERIAL:		MICROWAVE COMMUNICATIONS LABORATORIES INC. 7255 30TH AVE. N. SAINT PETERSBURG, FL 33710 TEL: (727) 344-6254 FAX: (727) 381-6116 http://WWW.MCLI.COM	SCALE:	N/A
			SHEET:	N/A
UNLESS OTHERWISE SPECIFIED: TOLERANCES IN (INCHES) OR [mm] (MILLIMETERS) FRACTIONS: $\pm 1/64$ DECIMALS: $\pm 0.01 \pm 0.005$ ANGLE: $\pm 1/2^\circ$		DRAWING TITLE:	CONTINUOUSLY VARIABLE ATTENUATOR	
DRAWN: Paiboon Luekhamhan		DATE: 02-08-2011	PART NO.:	CVA13-40
APPROVED: T. Nguyen		DATE: 02-08-2011	CAGE CODE:	OD2L5
THIRD ANGLE PROJECTION		SIZE:	A	REV: N/A
		DO NOT SCALE THE DRAWING		DWG NO. 85439