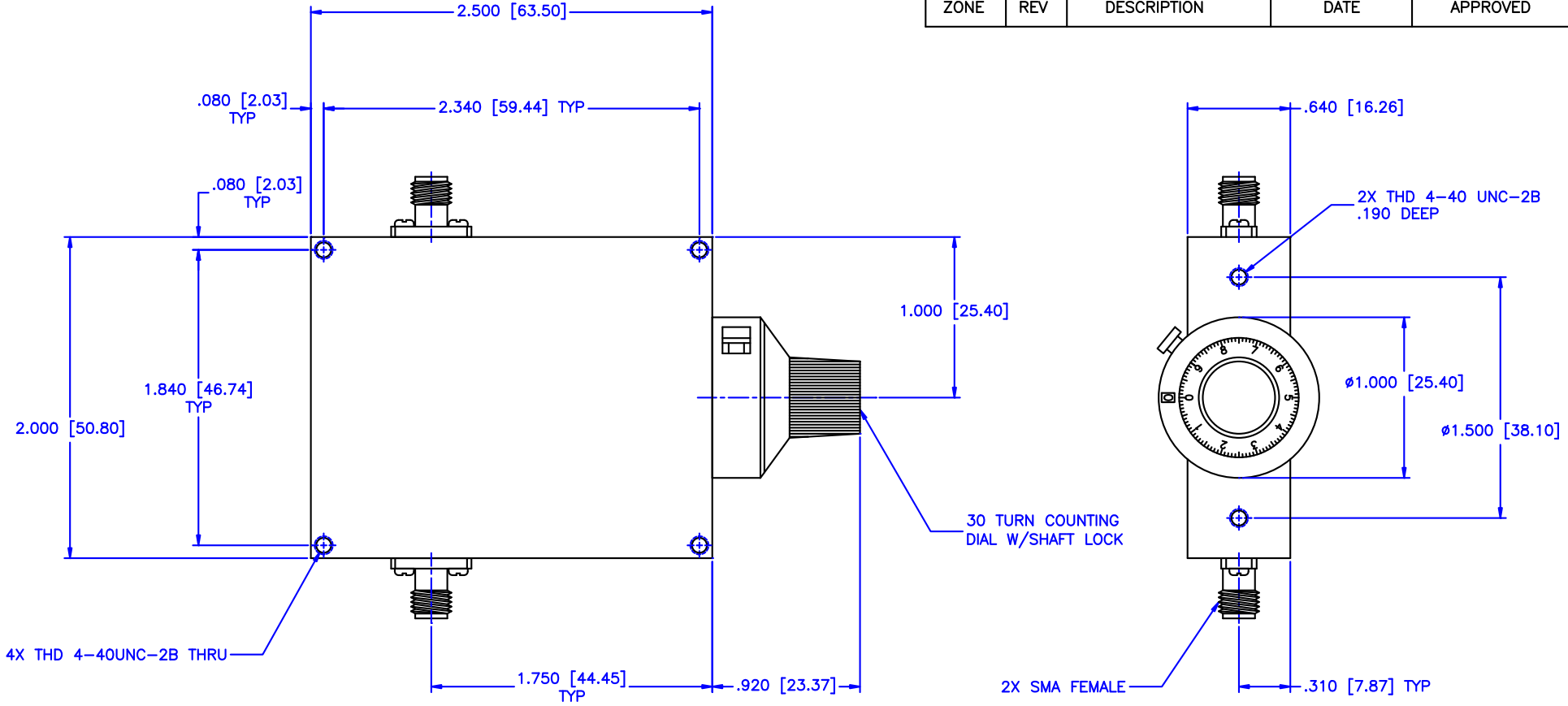


REVISIONS				
ZONE	REV	DESCRIPTION	DATE	APPROVED



SPECIFICATION:

Frequency Range: 8-18 GHz
 Attenuation: 40dB
 Insertion Loss: 0.5 Max.
 VSWR: 1.50:1 Max.
 RF Power: 7 W Average, 3kW Peak

Environmental:

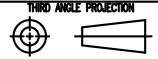
Temperature range: -55°C to +110°C
 Shock: 15 G's, 11ms, 1/2 sine
 Vibration: 3 G's overall
 Altitude: 40,000 ft. Survival
 25,000ft Operating

MATERIAL:		MCLI MICROWAVE COMMUNICATIONS LABORATORIES INC. 7255 30TH AVE. N. SAINT PETERSBURG, FL 33710 TEL: (727) 344-6254 FAX: (727) 381-6116 http://WWW.MCLI.COM	SCALE: N/A	
			SHEET: N/A	
UNLESS OTHERWISE SPECIFIED: TOLERANCES IN (INCHES) OR [mm] (MILLIMETERS) FRACTIONS: ± 1/64 DECIMALS: ± 0.01 ± 0.005 ANGLE: ± 1/2°		DRAWING TITLE: CONTINUOUSLY VARIABLE ATTENUATOR WITH DIAL		
DRAWN: Paiboon Luekhamhan		PART NO.: CVA13-40/D		
DATE: 11-18-2001		CAGE CODE: OD2L5		
APPROVED: T. Nguyen		SIZE: A		REV: N/A
DATE: 11-18-2001		DO NOT SCALE THE DRAWING		DWG NO.: 85440



UNLESS OTHERWISE SPECIFIED:
 TOLERANCES
 IN (INCHES) OR [mm] (MILLIMETERS)
 FRACTIONS: ± 1/64
 DECIMALS: ± 0.01 ± 0.005
 ANGLE: ± 1/2°

PROPRIETARY NOTICE:
 THE INFORMATION IN THIS DRAWING IS PROPRIETARY
 AND SHALL NOT BE USED OR DISCLOSED WITHOUT WRITTEN
 PERMISSION FROM MICROWAVE COMMUNICATIONS
 LABORATORIES INC. (MCLI)



DRAWING TITLE:
 CONTINUOUSLY VARIABLE ATTENUATOR WITH DIAL

PART NO.:
 CVA13-40/D

CAGE CODE: OD2L5
 SIZE: A
 REV: N/A
 DO NOT SCALE THE DRAWING
 DWG NO.: 85440